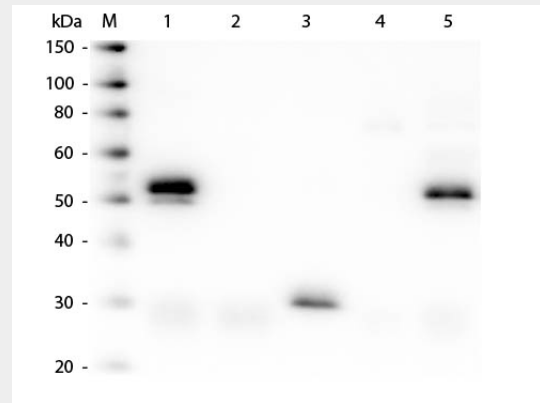


**Anti-Rabbit IgG (H&L) (Peroxidase Conjugated) Pre-Adsorbed Secondary Antibody**  
**Donkey Polyclonal, Peroxidase (Horseradish)**  
 Catalog # ASR2961

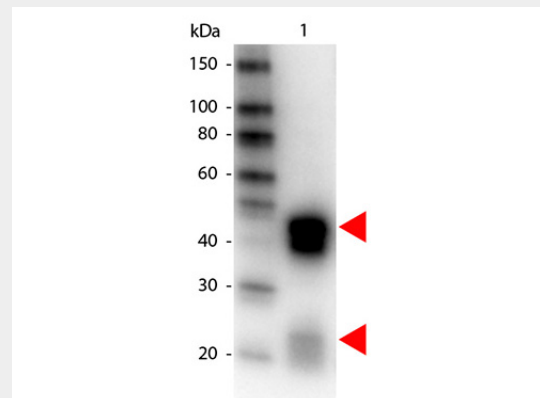
**Specification**

**Anti-Rabbit IgG (H&L) (Peroxidase Conjugated) Pre-Adsorbed Secondary Antibody - Product Information**

Description	<b>Anti-RABBIT IgG (H&amp;L) (DONKEY) Antibody Peroxidase Conjugated (Min X Bv Ch Gt GP Ham Hs Hu Ms Rt &amp; Sh Serum Proteins)</b>
Host Conjugate	<b>Donkey Peroxidase (Horseradish)</b>
Target Species	<b>Rabbit</b>
Reactivity	<b>Rabbit</b>
Clonality	<b>Polyclonal</b>
Application	<b>,1,10,15,</b>
Application Note	<b>ELISA 1:10,000-1:150,000;Western Blot 1:1,000-1:5,000;Immunochemis try 1:500-1:2,500</b>
Physical State	<b>Lyophilized</b>
Host Isotype	<b>IgG</b>
Target Isotype	<b>IgG (H&amp;L)</b>
Buffer	<b>0.02 M Potassium Phosphate, 0.15 M Sodium Chloride, pH 7.2</b>
Immunogen	<b>Anti-Rabbit IgG (H&amp;L) was produced by repeated immunization with rabbit whole IgG molecule in donkey.</b>
Reconstitution Volume	<b>1.0 mL</b>
Reconstitution Buffer	<b>Restore with deionized water (or equivalent)</b>
Stabilizer	<b>10 mg/mL Bovine Serum Albumin</b>



Western Blot of Anti-Rabbit IgG (H&L) (DONKEY) Antibody (Min X Bv Ch Gt GP Ham Hs Hu Ms Rt & Sh Serum Proteins) . Lane M: 3 µl Molecular Ladder. Lane 1: Rabbit IgG whole molecule . Lane 2: Rabbit IgG F(ab) Fragment . Lane 3: Rabbit IgG F(c) Fragment . Lane 4: Rabbit IgM Whole Molecule . Lane 5: Normal Rabbit Serum . All samples were reduced. Load: 50 ng of IgG, F(ab), F(c) and Serum, 25 ng of IgM. Block: MB-070 for 30 min at RT. Primary Antibody: Anti-Rabbit IgG (H&L) (DONKEY) Antibody (Min X Bv Ch Gt GP Ham Hs Hu Ms Rt & Sh Serum Proteins) 1:7,500 for 60 min at RT. Secondary antibody: Anti-Donkey IgG (GOAT) Peroxidase Conjugated Antibody 1:40,000 in MB-070 for 30 min at RT. Predicted/Obsevered Size: 25 and 50 kDa for Rabbit IgG and Serum, 25 kDa for F(c) and F(ab), 70 and 23 kDa for IgM. Rabbit F(c) migrates slightly higher.



Preservative  
**(BSA) -  
Immunoglobulin  
and Protease  
free  
0.01% (w/v)  
Gentamicin  
Sulfate. Do NOT  
add Sodium  
Azide!**

**Anti-Rabbit IgG (H&L) (Peroxidase Conjugated)  
Pre-Adsorbed Secondary Antibody - Additional  
Information**

**Shipping Condition**  
Ambient

**Purity**  
This product was prepared from monospecific antiserum by immunoaffinity chromatography using Rabbit IgG coupled to agarose beads followed by solid phase adsorption(s) to remove any unwanted reactivities. Assay by immunoelectrophoresis resulted in a single precipitin arc against anti-Peroxidase, anti-Donkey Serum, Rabbit IgG and Rabbit Serum. No reaction was observed against Bovine, Chicken, Goat, Guinea Pig, Hamster, Horse, Human, Mouse, Rat and Sheep Serum Proteins.

**Storage Condition**  
Store vial at 4° C prior to restoration. For extended storage aliquot contents and freeze at -20° C or below. Avoid cycles of freezing and thawing. Centrifuge product if not completely clear after standing at room temperature. This product is stable for several weeks at 4° C as an undiluted liquid. Dilute only prior to immediate use.

**Precautions Note**  
This product is for research use only and is not intended for therapeutic or diagnostic applications.

**Anti-Rabbit IgG (H&L) (Peroxidase Conjugated)  
Pre-Adsorbed Secondary Antibody - Protein  
Information**

**Anti-Rabbit IgG (H&L) (Peroxidase  
Conjugated) Pre-Adsorbed Secondary  
Antibody - Protocols**

Western Blot of Peroxidase conjugated Donkey anti-Rabbit IgG antibody. Lane 1: Rabbit IgG. Lane 2: none. Load: 50 ng per lane. Primary antibody: none. Secondary antibody: Peroxidase donkey secondary antibody at 1:1,000 for 60 min at RT Block: MB-070 for 30 min at RT. Predicted/Observed size: 55 kDa, 28 kDa for Rabbit IgG. Other band(s): none.

**Anti-Rabbit IgG (H&L) (Peroxidase  
Conjugated) Pre-Adsorbed Secondary  
Antibody - Background**

Anti-Rabbit IgG peroxidase conjugated antibody generated in donkey detects specifically rabbit IgG. This secondary peroxidase conjugated antibody anti-Rabbit is ideal for investigators who routinely perform titration assays, western-blot, immunoprecipitation and more generally immunoassays.

Provided below are standard protocols that you may find useful for product applications.

- [Western Blot](#)
- [Blocking Peptides](#)
- [Dot Blot](#)
- [Immunohistochemistry](#)
- [Immunofluorescence](#)
- [Immunoprecipitation](#)
- [Flow Cytometry](#)
- [Cell Culture](#)