

**Anti-Rat IgG F(ab')<sub>2</sub> (Alkaline Phosphatase Conjugated) Secondary Antibody**  
**Rabbit Polyclonal, Alkaline Phosphatase (Calf Intestine)**  
**Catalog # ASR2965****Specification****Anti-Rat IgG F(ab')<sub>2</sub> (Alkaline Phosphatase Conjugated) Secondary Antibody - Product Information**

Description	<b>Anti-RAT IgG F(ab')<sub>2</sub> (RABBIT) Antibody Alkaline Phosphatase Conjugated</b>
Host	<b>Rabbit</b>
Conjugate	<b>Alkaline Phosphatase (Calf Intestine)</b>
Target Species	<b>Rat</b>
Clonality	<b>Polyclonal</b>
Application	<b>WB, IHC, E</b>
Application Note	<b>ELISA 1:2,000-1:10,000;Western Blot 1:500-1:2,500;Immunohistochemistry 1:200-1:1,000</b>
Physical State	<b>Liquid (sterile filtered)</b>
Host Isotype	<b>IgG</b>
Target Isotype	<b>IgG F(ab')<sub>2</sub></b>
Buffer	<b>0.05 M Tris Chloride, 0.15M Sodium Chloride, 0.001M Magnesium Chloride, 0.0001M Zinc Chloride, 50% (v/v) Glycerol; pH 8.0</b>
Immunogen	<b>Rat IgG F(ab')<sub>2</sub> fragment</b>
Stabilizer	<b>10 mg/mL Bovine Serum Albumin (BSA) - Immunoglobulin and Protease free</b>
Preservative	<b>0.01% (w/v) Sodium Azide</b>

**Anti-Rat IgG F(ab')<sub>2</sub> (Alkaline Phosphatase Conjugated) Secondary Antibody - Additional Information****Shipping Condition**

Wet Ice

**Purity**

This product was prepared from monospecific antiserum by immunoaffinity chromatography using Rat IgG coupled to agarose beads followed by solid phase adsorption(s) to remove any unwanted reactivities. Assay by immunoelectrophoresis resulted in a single precipitin arc against anti-Alkaline Phosphatase (calf intestine), anti-Rabbit Serum, Rat IgG, Rat IgG F(ab')<sub>2</sub> and Rat Serum. No reaction was observed against Rat IgG F(c).

**Storage Condition**

Store vial at 4° C before opening. DO NOT FREEZE. This product is stable at 4° C as an undiluted liquid. Dilute only prior to immediate use. Freezing alkaline phosphatase conjugates will result in a substantial loss of enzymatic activity.

**Precautions Note**

This product is for research use only and is not intended for therapeutic or diagnostic applications.

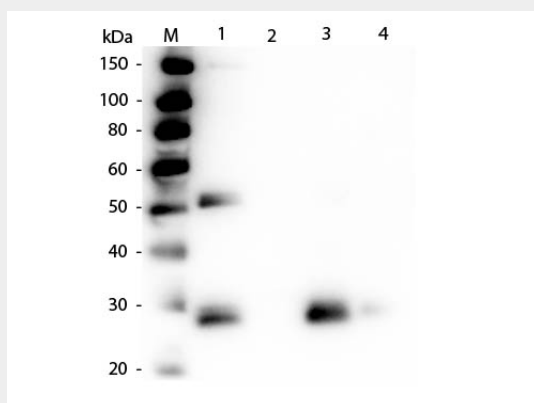
## Anti-Rat IgG F(ab')<sub>2</sub> (Alkaline Phosphatase Conjugated) Secondary Antibody - Protein Information

## Anti-Rat IgG F(ab')<sub>2</sub> (Alkaline Phosphatase Conjugated) Secondary Antibody - Protocols

Provided below are standard protocols that you may find useful for product applications.

- [Western Blot](#)
- [Blocking Peptides](#)
- [Dot Blot](#)
- [Immunohistochemistry](#)
- [Immunofluorescence](#)
- [Immunoprecipitation](#)
- [Flow Cytometry](#)
- [Cell Culture](#)

## Anti-Rat IgG F(ab')<sub>2</sub> (Alkaline Phosphatase Conjugated) Secondary Antibody - Images



Western Blot of Anti-Rat IgG F(ab')<sub>2</sub> (RABBIT) Antibody . Lane M: 3  $\mu$ l Molecular Ladder. Lane 1: Rat IgG whole molecule . Lane 2: Rat IgG F(c) Fragment . Lane 3: Rat IgG F(ab) Fragment . Lane 4: Rat IgM Whole Molecule . All samples were reduced. Load: 50 ng per lane. Block: MB-070 for 30 min at RT. Primary Antibody: Anti-Rat IgG F(ab')<sub>2</sub> (RABBIT) Antibody 1:1,000 for 60 min at RT. Secondary Antibody: Anti-Rabbit IgG (GOAT) Peroxidase Conjugated Antibody 1:40,000 in MB-070 for 30 min at RT. Predicted/Observed Size: 25 and 55 kDa for Rat IgG, 25 kDa for F(c) and F(ab), 78 and 25 kDa for IgM. Rat F(c) migrates slightly higher.