

Anti-Goat IgG (Phycoerythrin Conjugated) Secondary Antibody
Donkey Polyclonal, R-Phycoerythrin (RPE)
Catalog # ASR3085**Specification****Anti-Goat IgG (Phycoerythrin Conjugated) Secondary Antibody - Product Information**

| | |
|-----------------------|--|
| Description | Anti-GOAT IgG (DONKEY) Antibody |
| Host | Phycoerythrin conjugate |
| Conjugate | Donkey |
| Target Species | R-Phycoerythrin (RPE) |
| Clonality | Goat |
| Application | Polyclonal |
| Application Note | ,3,4, |
| Physical State | IF Microscopy 1:100-1:250;FlowCytometry |
| Host Isotype | 1:100-1:250;FLOW1:100-1:250 |
| Target Isotype | Lyophilized |
| Buffer | IgG |
| Immunogen | IgG (H&L) |
| Species of Origin | 0.02 M Potassium Phosphate, 0.15 M |
| Reconstitution Volume | Sodium Chloride, pH 7.2 |
| Stabilizer | Goat IgG whole molecule |
| Preservative | donkey |
| | 1.0 mL |
| | 10 mg/mL Bovine Serum Albumin (BSA) - |
| | Immunoglobulin and Protease free |
| | 0.01% (w/v) Sodium Azide |

Anti-Goat IgG (Phycoerythrin Conjugated) Secondary Antibody - Additional Information**Shipping Condition**

Wet Ice

Purity

Anti-Goat IgG was prepared from monospecific antiserum by immunoaffinity chromatography using Goat IgG coupled to agarose beads followed by solid phase adsorption(s) to remove any unwanted reactivities. Assay by immunoelectrophoresis resulted in a single precipitin arc against anti-Phycoerythrin, anti-Donkey Serum, Goat IgG and Goat Serum. No reaction was observed against Chicken, Guinea Pig, Hamster, Horse, Mouse, Human, Rabbit and Rat Serum Proteins.

Storage Condition

Store vial at 4° C prior to opening. Dilute only prior to immediate use. Do not freeze after reconstitution. Store reagent in the dark. This product is stable at 4° C as an undiluted liquid. Use subdued lighting during handling and incubation of cells prior to analysis.

Precautions Note

This product is for research use only and is not intended for therapeutic or diagnostic applications.

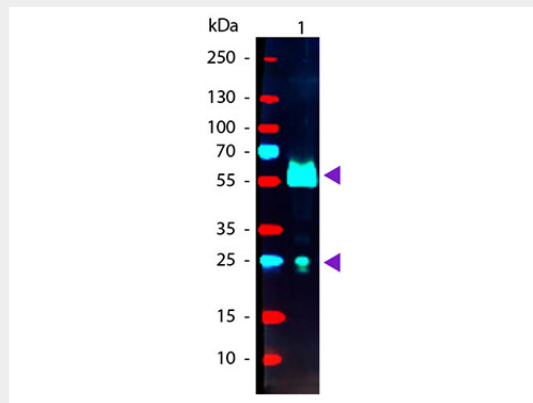
Anti-Goat IgG (Phycoerythrin Conjugated) Secondary Antibody - Protein Information

Anti-Goat IgG (Phycoerythrin Conjugated) Secondary Antibody - Protocols

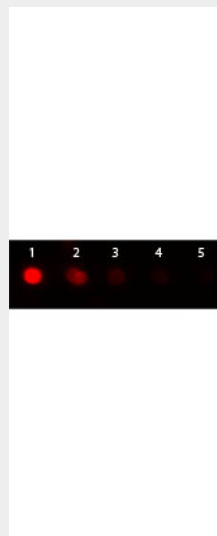
Provided below are standard protocols that you may find useful for product applications.

- [Western Blot](#)
- [Blocking Peptides](#)
- [Dot Blot](#)
- [Immunohistochemistry](#)
- [Immunofluorescence](#)
- [Immunoprecipitation](#)
- [Flow Cytometry](#)
- [Cell Culture](#)

Anti-Goat IgG (Phycoerythrin Conjugated) Secondary Antibody - Images



Western blot of Phycoerythrin conjugated Donkey Anti-Goat IgG Secondary antibody. Lane 1: Goat IgG. Lane 2: None. Load: 50 ng per lane. Primary antibody: None. Secondary antibody: Phycoerythrin donkey secondary antibody at 1:1,000 for 60 min at RT. Blocking: MB-070 for 30 min at RT. Predicted/Observed size: 25 & 55 kDa, 25 & 55 kDa for Goat IgG. Other band(s): None.



Dot Blot of Donkey anti-Goat IgG Antibody Phycoerythrin Conjugated. Antigen: Goat IgG. Load: Lane 1 - 100 ng Lane 2 - 33.3 ng Lane 3 - 11.1 ng Lane 4 - 3.70 ng Lane 5 - 1.23 ng. Primary antibody: none. Secondary antibody: Donkey anti-Goat IgG Antibody Phycoerythrin Conjugated at 1:1,000 for 60 min at RT. Block: MB-070 for 1 HR at RT.

Anti-Goat IgG (Phycoerythrin Conjugated) Secondary Antibody - Background

Goat IgG antibody recognizes IgG heavy and light chains. Anti-Goat IgG antibody was prepared from monospecific antiserum by immunoaffinity chromatography using Goat IgG coupled to agarose beads followed by solid phase adsorption(s) to remove any unwanted reactivities. Assay by immunoelectrophoresis resulted in a single precipitin arc against anti-Phycoerythrin, anti-Donkey Serum, Goat IgG and Goat Serum. No reaction was observed against Chicken, Guinea Pig, Hamster, Horse, Mouse, Human, Rabbit and Rat Serum Proteins. Anti-Goat IgG (H&L) antibody is ideal for investigators involved in serum component protein research.