

**Anti-Mouse IgG (H&L) (Phycoerythrin Conjugated) Pre-Adsorbed Secondary Antibody  
Goat Polyclonal, R-Phycoerythrin (RPE)  
Catalog # ASR3094**

**Specification**

**Anti-Mouse IgG (H&L) (Phycoerythrin Conjugated) Pre-Adsorbed Secondary Antibody -  
Product Information**

Description	<b>Anti-MOUSE IgG [H&amp;L] (GOAT) Antibody Phycoerythrin conjugated Min X Bv Ch Gt GP Hs Ham Hu Rb Rt &amp;Sh Serum Proteins</b>
Host	<b>Goat</b>
Conjugate	<b>R-Phycoerythrin (RPE)</b>
Target Species	<b>Mouse</b>
Reactivity	<b>Mouse</b>
Clonality	<b>Polyclonal</b>
Application	<b>,3,4,</b>
Application Note	<b>IF Microscopy 1:100-1:250;FlowCytometry 1:100-1:250;FLOW1:100-1:250</b>
Physical State	<b>Lyophilized</b>
Host Isotype	<b>IgG</b>
Target Isotype	<b>IgG (H&amp;L)</b>
Buffer	<b>0.02 M Potassium Phosphate, 0.15 M Sodium Chloride, pH 7.2</b>
Immunogen	<b>Anti-Mouse IgG was produced by repeated immunization with Mouse IgG whole molecule in goat.</b>
Reconstitution Volume	<b>1.0 mL</b>
Reconstitution Buffer	<b>Restore with deionized water (or equivalent)</b>
Stabilizer	<b>10 mg/mL Bovine Serum Albumin (BSA) - Immunoglobulin and Protease free</b>
Preservative	<b>0.01% (w/v) Sodium Azide</b>

**Anti-Mouse IgG (H&L) (Phycoerythrin Conjugated) Pre-Adsorbed Secondary Antibody -  
Additional Information**

**Shipping Condition**

Ambient

**Purity**

This product was prepared from monospecific antiserum by immunoaffinity chromatography using Mouse IgG coupled to agarose beads followed by solid phase adsorption(s) to remove any unwanted reactivities, conjugation to phycoerythrin and subsequent purification, and extensive dialysis against the buffer stated above. Assay by immunoelectrophoresis resulted in a single precipitin arc against anti-Phycoerythrin, anti-Goat Serum, Mouse IgG and Mouse Serum. No reaction was observed against Bovine, Chicken, Goat, Guinea Pig, Hamster, Horse, Human, Rabbit, Rat and Sheep Serum Proteins.

**Storage Condition**

Store vial at 4° C prior to opening. Dilute only prior to immediate use. Do not freeze after

reconstitution. Store reagent in the dark. This product is stable at 4° C as an undiluted liquid. Use subdued lighting during handling and incubation of cells prior to analysis.

#### Precautions Note

This product is for research use only and is not intended for therapeutic or diagnostic applications.

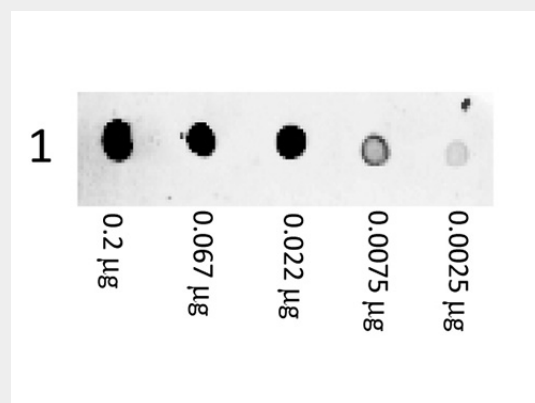
#### Anti-Mouse IgG (H&L) (Phycoerythrin Conjugated) Pre-Adsorbed Secondary Antibody - Protein Information

#### Anti-Mouse IgG (H&L) (Phycoerythrin Conjugated) Pre-Adsorbed Secondary Antibody - Protocols

Provided below are standard protocols that you may find useful for product applications.

- [Western Blot](#)
- [Blocking Peptides](#)
- [Dot Blot](#)
- [Immunohistochemistry](#)
- [Immunofluorescence](#)
- [Immunoprecipitation](#)
- [Flow Cytometry](#)
- [Cell Culture](#)

#### Anti-Mouse IgG (H&L) (Phycoerythrin Conjugated) Pre-Adsorbed Secondary Antibody - Images



Dot Blot of Goat anti-Mouse IgG Antibody Phycoerythrin Conjugated. Antigen: Mouse IgG. Load: 3-fold serial dilution starting at 200 ng. Primary antibody: None. Secondary antibody: Phycoerythrin goat secondary antibody at 1:1,000 for 60 min at RT. Block: 5% BLOTTO 1 Hour at RT.

#### Anti-Mouse IgG (H&L) (Phycoerythrin Conjugated) Pre-Adsorbed Secondary Antibody - Background

Anti-Mouse IgG (H&L) Phycoerythrin conjugated antibody generated in goat detects specifically mouse IgG (H&L). This secondary conjugated antibody anti-mouse is ideal for investigators who routinely perform immunomicroscopy and flow cytometry or FACS analysis as well as other antibody-based fluorescent assays requiring extremely low background levels.