

Anti-Rabbit IgG (H&L) (Phycoerythrin Conjugated) Pre-Adsorbed Secondary Antibody
Goat Polyclonal, R-Phycoerythrin (RPE)
Catalog # ASR3103

Specification

**Anti-Rabbit IgG (H&L) (Phycoerythrin Conjugated) Pre-Adsorbed Secondary Antibody -
Product Information**

Description	Anti-RABBIT IgG [H&L] (GOAT) Antibody Phycoerythrin conjugated (Min X Bv Ch Gt GP Ham Hs Hu Ms Rt & Sh Serum Proteins)
Host	Goat
Conjugate	R-Phycoerythrin (RPE)
Target Species	Rabbit
Reactivity	Rabbit
Clonality	Polyclonal
Application	,3,4,
Application Note	IF Microscopy 1:100-1:250;FlowCytometry 1:100-1:250;FLOW1:100-1:250
Physical State	Lyophilized
Host Isotype	IgG
Target Isotype	IgG (H&L)
Buffer	0.02 M Potassium Phosphate, 0.15 M Sodium Chloride, pH 7.2
Immunogen	Anti-Rabbit IgG was produced by repeated immunization with rabbit IgG whole molecule in goat.
Reconstitution Volume	1.0 mL
Reconstitution Buffer	Restore with deionized water (or equivalent)
Stabilizer	10 mg/mL Bovine Serum Albumin (BSA) - Immunoglobulin and Protease free
Preservative	0.01% (w/v) Sodium Azide

**Anti-Rabbit IgG (H&L) (Phycoerythrin Conjugated) Pre-Adsorbed Secondary Antibody -
Additional Information**

Shipping Condition

Ambient

Purity

Rabbit IgG (H&L) Antibody Phycoerythrin conjugated (Pre-Adsorbed) was prepared from monospecific antiserum by immunoaffinity chromatography using Rabbit IgG coupled to agarose beads followed by solid phase adsorption(s) to remove any unwanted reactivities, conjugation to phycoerythrin and subsequent purification, and extensive dialysis against the buffer stated above. Assay by immunoelectrophoresis resulted in a single precipitin arc against anti-Phycoerythrin, anti-Goat Serum, Rabbit IgG and Rabbit Serum. No reaction was observed against Bovine, Chicken, Goat, Guinea Pig, Hamster, Horse, Human, Mouse, Rat and Sheep Serum Proteins.

Storage Condition

Store vial at 4° C prior to opening. Dilute only prior to immediate use. Do not freeze after

reconstitution. Store reagent in the dark. This product is stable at 4° C as an undiluted liquid. Use subdued lighting during handling and incubation of cells prior to analysis.

Precautions Note

This product is for research use only and is not intended for therapeutic or diagnostic applications.

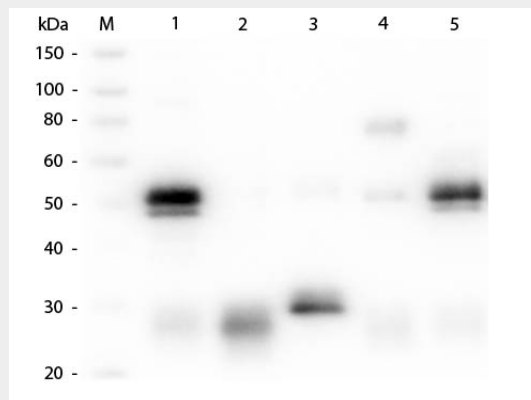
Anti-Rabbit IgG (H&L) (Phycoerythrin Conjugated) Pre-Adsorbed Secondary Antibody - Protein Information

Anti-Rabbit IgG (H&L) (Phycoerythrin Conjugated) Pre-Adsorbed Secondary Antibody - Protocols

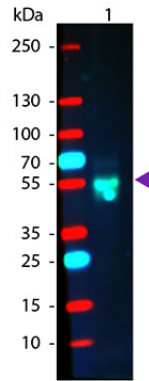
Provided below are standard protocols that you may find useful for product applications.

- [Western Blot](#)
- [Blocking Peptides](#)
- [Dot Blot](#)
- [Immunohistochemistry](#)
- [Immunofluorescence](#)
- [Immunoprecipitation](#)
- [Flow Cytometry](#)
- [Cell Culture](#)

Anti-Rabbit IgG (H&L) (Phycoerythrin Conjugated) Pre-Adsorbed Secondary Antibody - Images



Western Blot of Anti-Rabbit IgG (H&L) (GOAT) Antibody (Min X Bv, Ch, Gt, GP, Ham, Hs, Hu, Ms, Rt & Sh Serum Proteins) . Lane M: 3 μ l Molecular Ladder. Lane 1: Rabbit IgG whole molecule . Lane 2: Rabbit IgG F(ab) Fragment . Lane 3: Rabbit IgG F(c) Fragment . Lane 4: Rabbit IgM Whole Molecule . Lane 5: Normal Rabbit Serum . All samples were reduced. Load: 50 ng per lane. Block: MB-070 for 30 min at RT. Primary Antibody: Anti-Rabbit IgG (H&L) (GOAT) Antibody (Min X Bv, Ch, Gt, GP, Ham, Hs, Hu, Ms, Rt & Sh Serum Proteins) 1:1,000 for 60 min at RT. Secondary antibody: Anti-Goat IgG (DONKEY) Peroxidase Conjugated Antibody 1:40,000 in MB-070 for 30 min at RT. Predicted/Observed Size: 25 and 50 kDa for Rabbit IgG and Serum, 25 kDa for F(c) and F(ab), 70 and 23 kDa for IgM. Rabbit F(c) migrates slightly higher.



Western Blot of Goat anti-Rabbit IgG Pre-Absorbed Phycoerythrin Conjugated Antibody. Lane 1: Rabbit IgG. Lane 2: None. Load: 50 ng per lane. Primary antibody: None. Secondary antibody: Phycoerythrin goat secondary antibody at 1:1,000 for 60 min at RT. Block: MB-070 for 30 min at RT. Predicted/Observed size: 28 & 55 kDa, 55 kDa for Rabbit IgG. Other band(s): None.

Anti-Rabbit IgG (H&L) (Phycoerythrin Conjugated) Pre-Adsorbed Secondary Antibody - Background

Anti-Rabbit IgG (H&L) phycoerythrin conjugated antibody generated in goat detects specifically rabbit IgG. This secondary phycoerythrin conjugated antibody anti-Rabbit is ideal for investigators who routinely perform titration assays, microscopy and FACS analysis.