

**Anti-Monkey IgM (mu chain) Secondary Antibody**  
**Goat Polyclonal, Alkaline Phosphatase (Calf Intestine)**  
**Catalog # ASR3114****Specification****Anti-Monkey IgM (mu chain) Secondary Antibody - Product Information**

Description	<b>Anti-MONKEY IgM (mu chain) (GOAT) Antibody Alkaline Phosphatase Conjugated</b>
Host	<b>Goat</b>
Conjugate	<b>Alkaline Phosphatase (Calf Intestine)</b>
Target Species	<b>Monkey</b>
Clonality	<b>Polyclonal</b>
Application	<b>WB, E, IC</b>
Application Note	<b>ELISA 1:2,000-1:10,000;Western Blot 1:500-1:3,000;Immunochemistry 1:200-1:1,000</b>
Physical State	<b>Liquid (sterile filtered)</b>
Host Isotype	<b>IgG</b>
Target Isotype	<b>IgM <math>\mu</math> chain</b>
Buffer	<b>0.05 M Tris Chloride, 0.15M Sodium Chloride, 0.001M Magnesium Chloride, 0.0001M Zinc Chloride, 50% (v/v) Glycerol; pH 8.0</b>
Immunogen	<b>Monkey IgM mu heavy chain</b>
Stabilizer	<b>10 mg/mL Bovine Serum Albumin (BSA) - Immunoglobulin and Protease free</b>
Preservative	<b>0.01% (w/v) Sodium Azide</b>

**Anti-Monkey IgM (mu chain) Secondary Antibody - Additional Information****Shipping Condition**

Wet Ice

**Purity**

Anti-Monkey IgM (mu chain) Antibody was prepared from monospecific antiserum by immunoaffinity chromatography using Monkey IgM coupled to agarose beads followed by solid phase adsorption(s) to remove any unwanted reactivities. Assay by immunoelectrophoresis resulted in a single precipitin arc against anti-Alkaline Phosphatase (calf intestine), anti-Goat Serum, Monkey IgM and Monkey Serum. Specificity was confirmed by ELISA at less than 1% cross reactivity against other mouse or human heavy or light chain isotypes.

**Storage Condition**

Store vial at 4° C before opening. DO NOT FREEZE. This product is stable at 4° C as an undiluted liquid. Dilute only prior to immediate use. Freezing alkaline phosphatase conjugates will result in a substantial loss of enzymatic activity.

**Precautions Note**

This product is for research use only and is not intended for therapeutic or diagnostic applications.

## Anti-Monkey IgM (mu chain) Secondary Antibody - Protein Information

### Anti-Monkey IgM (mu chain) Secondary Antibody - Protocols

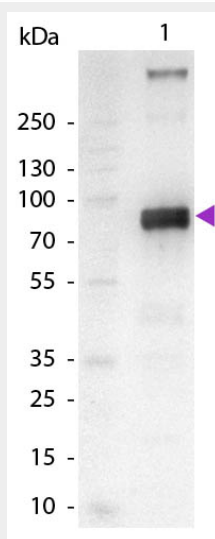
Provided below are standard protocols that you may find useful for product applications.

- [Western Blot](#)
- [Blocking Peptides](#)
- [Dot Blot](#)
- [Immunohistochemistry](#)
- [Immunofluorescence](#)
- [Immunoprecipitation](#)
- [Flow Cytometry](#)
- [Cell Culture](#)

### Anti-Monkey IgM (mu chain) Secondary Antibody - Images

Product	Gt-a-Monkey IgG	Gt-a-Monkey IgA	Gt-a-Monkey IgM
Rhesus Serum	+	+	+
Baboon Serum	+	+	+
Cynomolgus Serum	+	+	+
Rhesus IgG	+		
Human IgA		+	
Human IgM			+

This table displays additional reactivity among various species of serum and immunoglobulin. A (+) indicates antibody reactivity to the corresponding target.



Western Blot of Alkaline Phosphatase Conjugated Goat Anti-Monkey IgM (mu chain) Secondary Antibody. Lane 1: Monkey IgM. Lane 2: None. Load: 100 ng per lane. Primary antibody: None.

Secondary antibody: Alkaline Phosphatase goat secondary antibody at 1:1,000 for 60 min at RT.  
Blocking: MB-070 for 30 min at RT. Predicted/Observed size: 72 kDa, 72 kDa for Monkey IgM.  
Other band(s): Monkey IgM splice variants and isoforms.

#### **Anti-Monkey IgM (mu chain) Secondary Antibody - Background**

Anti-Monkey IgM (mu chain) Antibody generated in goat detects specifically mouse IgM whole molecule. Anti-Monkey IgM (mu chain) Antibody is ideal for investigators who routinely perform ELISA, Sandwich ELISA, titration assays, western-blot, immunoprecipitation and more generally immunoassays. Anti-Monkey IgM (mu chain) Antibody is ideal for investigators in Immunology, Cancer, and Microbiology research.