

Human IgG F(c) Texas Red™
Catalog # ASR3210**Specification**

Human IgG F(c) Texas Red™ - Product Information

Description	HUMAN IgG F(c) fragment Texas Red™ conjugated
Conjugate	Texas Red®
FP Value	2.6 moles Texas Red® per mole of Human IgG F(c)
Physical State	Lyophilized
Host Isotype	IgG F(c)
Buffer	0.02 M Potassium Phosphate, 0.15 M Sodium Chloride, pH 7.2
Species of Origin	Human
Reconstitution Volume	1.0 mL
Reconstitution Buffer	Restore with deionized water (or equivalent)
Stabilizer	10 mg/mL Bovine Serum Albumin (BSA) - Immunoglobulin and Protease free
Preservative	0.01% (w/v) Sodium Azide

Human IgG F(c) Texas Red™ - Additional Information**Shipping Condition**

Ambient

Purity

Human IgG F(c) Texas Red™ was prepared from normal serum by delipidation, salt fractionation, ion exchange chromatography followed by papain digestion and extensive dialysis against the buffer stated above. Assay by immunoelectrophoresis resulted in a single precipitin arc against anti-Human IgG, anti-Human IgG F(c) and anti-Human Serum. No reaction was observed against anti-Human IgG F(ab')₂ or anti-Papain.

Storage Condition

Store vial at 4° C prior to restoration. For extended storage aliquot contents and freeze at -20° C or below. Avoid cycles of freezing and thawing. Centrifuge product if not completely clear after standing at room temperature. This product is stable for several weeks at 4° C as an undiluted liquid. Dilute only prior to immediate use.

Precautions Note

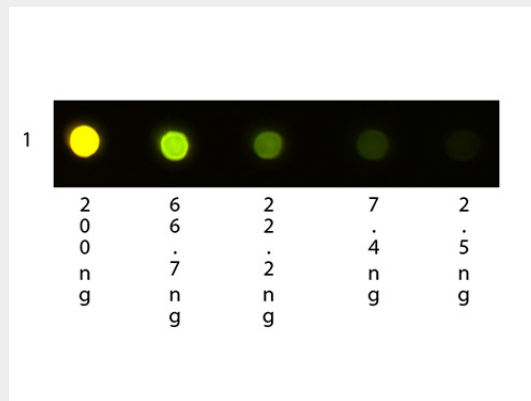
This product is for research use only and is not intended for therapeutic or diagnostic applications.

Human IgG F(c) Texas Red™ - Protein Information**Human IgG F(c) Texas Red™ - Protocols**

Provided below are standard protocols that you may find useful for product applications.

- [Western Blot](#)
- [Blocking Peptides](#)
- [Dot Blot](#)
- [Immunohistochemistry](#)
- [Immunofluorescence](#)
- [Immunoprecipitation](#)
- [Flow Cytometry](#)
- [Cell Culture](#)

Human IgG F(c) Texas Red™ - Images



Dot Blot of Human IgG F(c) Texas Red™ Conjugated. Antigen: Texas Red™ Conjugated Human IgG F(c). Load: 3-fold serial dilution starting at 200 ng. Primary antibody: None. Secondary antibody: None. Block: MB-070 for 1 H at RT.

Human IgG F(c) Texas Red™ - Background

Human IgG F(c) Texas Red™ conjugated antibodies are designed for immunofluorescence microscopy, fluorescence based plate assays (FLISA) and fluorescent western blotting. This product is also suitable for multiplex analysis, including multicolor imaging, utilizing various commercial platforms.