

**Anti-Mouse IgG (H&L) (ATTO 550 Conjugated) Pre-Adsorbed Secondary Antibody**  
**Goat Polyclonal, ATTO 550**  
**Catalog # ASR3242****Specification****Anti-Mouse IgG (H&L) (ATTO 550 Conjugated) Pre-Adsorbed Secondary Antibody -  
Product Information**

Description	<b>Anti-MOUSE IgG (H&amp;L) (GOAT) Antibody</b> <b>ATTO 550 Conjugated (Min X Bv Ch Gt GP</b> <b>Ham Hs Hu Rb Rt &amp; Sh Serum Proteins)</b> <b>Goat</b>
Host	<b>ATTO 550</b>
Conjugate	<b>2.5 moles ATTO 550 per mole of IgG</b>
FP Value	<b>Mouse</b>
Target Species	<b>Polyclonal</b>
Clonality	<b>WB, IF</b>
Application	<b>FLISA &gt;1:20,000;IF Microscopy</b>
Application Note	<b>&gt;1:5,000;Western Blot &gt;1:10,000</b>
Physical State	<b>Lyophilized</b>
Host Isotype	<b>IgG</b>
Target Isotype	<b>IgG (H&amp;L)</b>
Buffer	<b>0.02 M Potassium Phosphate, 0.15 M</b> <b>Sodium Chloride, pH 7.2</b>
Immunogen	<b>Mouse IgG whole molecule</b>
Reconstitution Volume	<b>500 µL</b>
Reconstitution Buffer	<b>Restore with deionized water (or</b> <b>equivalent)</b>
Stabilizer	<b>10 mg/mL Bovine Serum Albumin (BSA) -</b> <b>Immunoglobulin and Protease free</b>
Preservative	<b>0.01% (w/v) Sodium Azide</b>

**Anti-Mouse IgG (H&L) (ATTO 550 Conjugated) Pre-Adsorbed Secondary Antibody -  
Additional Information****Shipping Condition**

Ambient

**Purity**

Mouse IgG (H&L) Antibody ATTO 550 was prepared from monospecific antiserum by immunoaffinity chromatography using Mouse IgG coupled to agarose beads followed by solid phase adsorption(s) to remove any unwanted reactivities. Assay by immunoelectrophoresis resulted in a single precipitin arc against anti-Goat Serum, Mouse IgG and Mouse Serum. No reaction was observed against Bovine, Chicken, Goat, Guinea Pig, Hamster, Horse, Human, Rabbit, Rat and Sheep Serum Proteins. This antibody will react with heavy chains of mouse IgG and with light chains of most mouse immunoglobulins.

**Storage Condition**

Store vial at 4° C prior to restoration. For extended storage aliquot contents and freeze at -20° C or below. Avoid cycles of freezing and thawing. Centrifuge product if not completely clear after standing at room temperature. This product is stable for several weeks at 4° C as an undiluted

liquid. Dilute only prior to immediate use.

#### **Precautions Note**

This product is for research use only and is not intended for therapeutic or diagnostic applications.

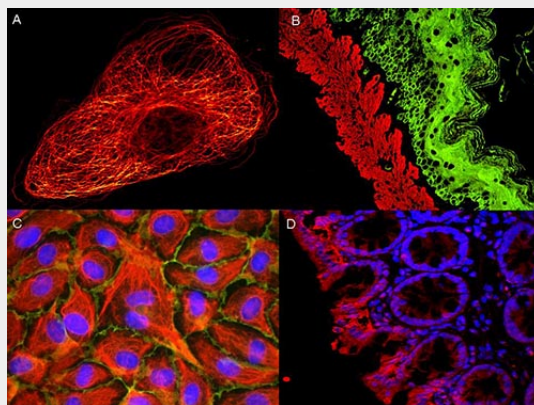
#### **Anti-Mouse IgG (H&L) (ATTO 550 Conjugated) Pre-Adsorbed Secondary Antibody - Protein Information**

#### **Anti-Mouse IgG (H&L) (ATTO 550 Conjugated) Pre-Adsorbed Secondary Antibody - Protocols**

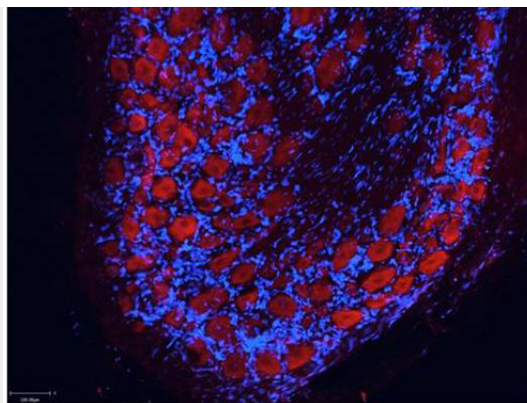
Provided below are standard protocols that you may find useful for product applications.

- [Western Blot](#)
- [Blocking Peptides](#)
- [Dot Blot](#)
- [Immunohistochemistry](#)
- [Immunofluorescence](#)
- [Immunoprecipitation](#)
- [Flow Cytometry](#)
- [Cell Culture](#)

#### **Anti-Mouse IgG (H&L) (ATTO 550 Conjugated) Pre-Adsorbed Secondary Antibody - Images**



ATTO ® dyes can be used for multicolor immunofluorescent detection with low background and high signal. Examples shown are: A. Tubulin in PtK2- male Rat Kangaroo Kidney Epithelial Cells was detected using ATTO 532 labeled secondary antibody. B. Muscle alpha-actin was stained with a mouse primary antibody and ATTO 488 anti-mouse IgG (green) while Cytokeratin was stained with polyclonal rabbit anti-cytokeratin and ATTO 647N anti-rabbit IgG (red). C. HUVEC (Human umbilical vein endothelial cells) were stained with anti- Vimentin-ATTO 532 (green), anti-E-Cadherin-ATTO 655 (red) and DAPI (blue). D. Rat colon sections were stained with Anti-Aquaporin 3-ATTO 594 antibody. Hoechst 33342 (blue) is used as counterstain. Images provided courtesy of Dr. Jörg Reichwein, ATTO-TEC GmbH



Atto™ dyes can be used for multicolor immunofluorescent detection with low background and high signal. Example shown here is Immunohistochemical staining using ATTO-550 Anti-Aquaporin 2-antibody (red) of paraffin embedded region of rat kidney showing a transversal cut of the inner medulla near to the renal papilla. Nuclei are visualized with Hoechst 33342 (blue). Images provided courtesy of Dr. Jörg Reichwein, ATTO-TEC GmbH

**Anti-Mouse IgG (H&L) (ATTO 550 Conjugated) Pre-Adsorbed Secondary Antibody - Background**

Anti-Mouse IgG (H&L) conjugated to ATTO 550 is designed for STED microscopy, FRET, immunofluorescence microscopy, fluorescence based plate assays (FLISA) and fluorescent western blotting. This product is also suitable for multiplex analysis, including multicolor imaging, utilizing various commercial platforms.