

**Anti-MOUSE IgG2a (ATTO 647N Conjugated) Pre-adsorbed Secondary Antibody**  
**Goat Polyclonal, ATTO 647N**  
**Catalog # ASR3249****Specification****Anti-MOUSE IgG2a (ATTO 647N Conjugated) Pre-adsorbed Secondary Antibody - Product Information**

Description	<b>Anti-MOUSE IgG2a (Gamma 2a chain) (GOAT) Antibody ATTO 647N Conjugated (Min Cross Bv, Hu, and Rb Serum Proteins)</b>
Host	<b>Goat</b>
Conjugate	<b>ATTO 647N</b>
FP Value	<b>1.3 moles ATTO 647N per mole of IgG</b>
Target Species	<b>Mouse</b>
Reactivity	<b>Mouse</b>
Clonality	<b>Polyclonal</b>
Application	<b>WB, IF, FC</b>
Application Note	<b>FLISA &gt;1:20,000;IF Microscopy &gt;1:5,000;FlowCytometry 1:500-1:2,500;Western Blot 1:4,000-1:20,000</b>
Physical State	<b>Lyophilized</b>
Host Isotype	<b>IgG</b>
Target Isotype	<b>IgG2a</b>
Buffer	<b>0.02 M Potassium Phosphate, 0.15 M Sodium Chloride, pH 7.2</b>
Immunogen	<b>Mouse IgG2a heavy chain</b>
Reconstitution Volume	<b>500 µL</b>
Reconstitution Buffer	<b>Restore with deionized water (or equivalent)</b>
Stabilizer	<b>10 mg/mL Bovine Serum Albumin (BSA) - Immunoglobulin and Protease free</b>
Preservative	<b>0.01% (w/v) Sodium Azide</b>

**Anti-MOUSE IgG2a (ATTO 647N Conjugated) Pre-adsorbed Secondary Antibody - Additional Information****Shipping Condition**

Ambient

**Purity**

MOUSE IgG2a Antibody was prepared from monospecific antiserum by immunoaffinity chromatography using antigens coupled to agarose beads followed by solid phase adsorption(s) to remove any unwanted reactivities. Assay by immunoelectrophoresis resulted in a single precipitin arc against anti-Goat Serum, Mouse Serum and Mouse IgG2a. Specificity was confirmed by ELISA at less than 1% cross-reactivity against other mouse heavy or light chain isotypes. No reaction was observed against Bovine, Human, and Rabbit Serum Proteins. Specificity was confirmed by ELISA at less than 1% of target signal.

**Storage Condition**

Store vial at 4° C prior to restoration. For extended storage aliquot contents and freeze at -20° C or below. Avoid cycles of freezing and thawing. Centrifuge product if not completely clear after standing at room temperature. This product is stable for several weeks at 4° C as an undiluted liquid. Dilute only prior to immediate use.

#### Precautions Note

This product is for research use only and is not intended for therapeutic or diagnostic applications.

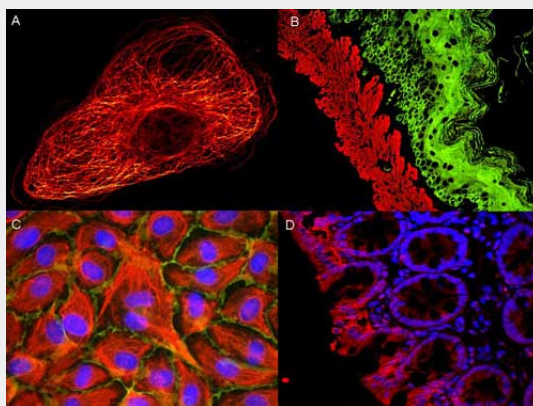
#### Anti-MOUSE IgG2a (ATTO 647N Conjugated) Pre-adsorbed Secondary Antibody - Protein Information

#### Anti-MOUSE IgG2a (ATTO 647N Conjugated) Pre-adsorbed Secondary Antibody - Protocols

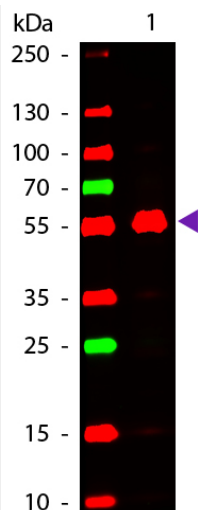
Provided below are standard protocols that you may find useful for product applications.

- [Western Blot](#)
- [Blocking Peptides](#)
- [Dot Blot](#)
- [Immunohistochemistry](#)
- [Immunofluorescence](#)
- [Immunoprecipitation](#)
- [Flow Cytometry](#)
- [Cell Culture](#)

#### Anti-MOUSE IgG2a (ATTO 647N Conjugated) Pre-adsorbed Secondary Antibody - Images



ATTO ® dyes can be used for multicolor immunofluorescent detection with low background and high signal. Examples shown are: A. Tubulin in PtK2- male Rat Kangaroo Kidney Epithelial Cells was detected using ATTO 532 labeled secondary antibody. B. Muscle alpha-actin was stained with a mouse primary antibody and ATTO 488 anti-mouse IgG (green) while Cytokeratin was stained with polyclonal rabbit anti-cytokeratin and ATTO 647N anti-rabbit IgG (red). C. HUVEC (Human umbilical vein endothelial cells) were stained with anti- Vimentin-ATTO 532 (green), anti-E-Cadherin-ATTO 655 (red) and DAPI (blue). D. Rat colon sections were stained with Anti-Aquaporin 3-ATTO 594 antibody. Hoechst 33342 (blue) is used as counterstain. Images provided courtesy of Dr. Jörg Reichwein, ATTO-TEC GmbH



Western Blot of ATTO 647N conjugated Goat anti-Mouse IgG2a (Pre-Adsorbed) secondary antibody. Lane 1: Mouse IgG2a. Lane 2: none. Load: 50 ng per lane. Primary antibody: none. Secondary antibody: ATTO 647N goat secondary antibody at 1:1,000 for 60 min at RT. Block: MB-070 for 30 min at RT. Predicted/Observed size: 55 kDa, 55 kDa for Mouse IgG2a. Other band(s): none.

#### **Anti-MOUSE IgG2a (ATTO 647N Conjugated) Pre-adsorbed Secondary Antibody - Background**

Mouse IgG2a secondary antibody is available in a variety of formats. ATTO dye conjugated antibodies are designed for STED microscopy, FRET, immunofluorescence microscopy, fluorescence based plate assays (FLISA) and fluorescent western blotting. This product is also suitable for multiplex analysis, including multicolor imaging, utilizing various commercial platforms.