

Anti-Rabbit IgG (H&L) (ATTO 594 Conjugated) Pre-Adsorbed Secondary Antibody
Goat Polyclonal, ATTO 594
Catalog # ASR3269**Specification****Anti-Rabbit IgG (H&L) (ATTO 594 Conjugated) Pre-Adsorbed Secondary Antibody -
Product Information**

Description	Anti-RABBIT IgG (H&L) (GOAT) Antibody ATTO 594 Conjugated (Min X Bv Ch Gt GP Ham Hs Hu Ms Rt & Sh Serum Proteins) Goat
Host	ATTO 594
Conjugate	2.5 moles ATTO 594 per mole of IgG
FP Value	Rabbit
Target Species	Polyclonal
Clonality	WB, IF
Application	FLISA >1:20,000;IF Microscopy >1:5,000;Western Blot >1:10,000
Application Note	Lyophilized
Physical State	IgG
Host Isotype	IgG (H&L)
Target Isotype	0.02 M Potassium Phosphate, 0.15 M Sodium Chloride, pH 7.2
Buffer	Rabbit IgG whole molecule 500 µL Restore with deionized water (or equivalent)
Immunogen	10 mg/mL Bovine Serum Albumin (BSA) - Immunoglobulin and Protease free
Reconstitution Volume	0.01% (w/v) Sodium Azide
Reconstitution Buffer	
Stabilizer	
Preservative	

**Anti-Rabbit IgG (H&L) (ATTO 594 Conjugated) Pre-Adsorbed Secondary Antibody -
Additional Information****Shipping Condition**

Ambient

Purity

Rabbit IgG (H&L) Antibody ATTO 594 was prepared from monospecific antiserum by immunoaffinity chromatography using Rabbit IgG coupled to agarose beads followed by solid phase adsorption(s) to remove any unwanted reactivities. Assay by immunoelectrophoresis resulted in a single precipitin arc against anti-Goat Serum, Rabbit IgG and Rabbit Serum. No reaction was observed against Bovine, Chicken, Goat, Guinea Pig, Hamster, Horse, Human, Mouse, Rat and Sheep Serum Proteins. This antibody will react with heavy chains of rabbit IgG and with light chains of most rabbit immunoglobulins.

Storage Condition

Store vial at 4° C prior to restoration. For extended storage aliquot contents and freeze at -20° C or below. Avoid cycles of freezing and thawing. Centrifuge product if not completely clear after standing at room temperature. This product is stable for several weeks at 4° C as an undiluted

liquid. Dilute only prior to immediate use.

Precautions Note

This product is for research use only and is not intended for therapeutic or diagnostic applications.

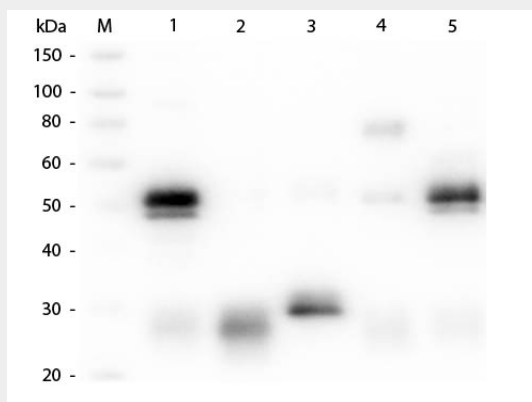
Anti-Rabbit IgG (H&L) (ATTO 594 Conjugated) Pre-Adsorbed Secondary Antibody - Protein Information

Anti-Rabbit IgG (H&L) (ATTO 594 Conjugated) Pre-Adsorbed Secondary Antibody - Protocols

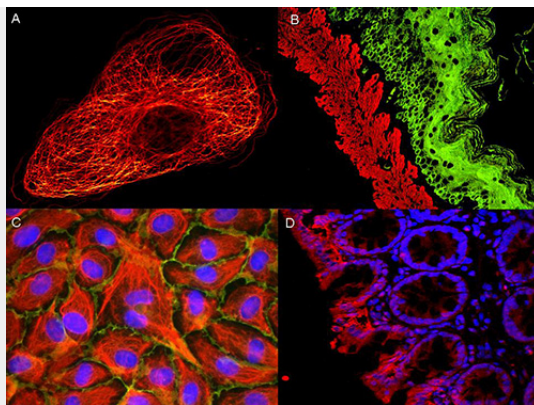
Provided below are standard protocols that you may find useful for product applications.

- [Western Blot](#)
- [Blocking Peptides](#)
- [Dot Blot](#)
- [Immunohistochemistry](#)
- [Immunofluorescence](#)
- [Immunoprecipitation](#)
- [Flow Cytometry](#)
- [Cell Culture](#)

Anti-Rabbit IgG (H&L) (ATTO 594 Conjugated) Pre-Adsorbed Secondary Antibody - Images



Western Blot of Anti-Rabbit IgG (H&L) (GOAT) Antibody (Min X Bv, Ch, Gt, GP, Ham, Hs, Hu, Ms, Rt & Sh Serum Proteins) . Lane M: 3 μ l Molecular Ladder. Lane 1: Rabbit IgG whole molecule . Lane 2: Rabbit IgG F(ab) Fragment . Lane 3: Rabbit IgG F(c) Fragment . Lane 4: Rabbit IgM Whole Molecule . Lane 5: Normal Rabbit Serum . All samples were reduced. Load: 50 ng per lane. Block: MB-070 for 30 min at RT. Primary Antibody: Anti-Rabbit IgG (H&L) (GOAT) Antibody (Min X Bv, Ch, Gt, GP, Ham, Hs, Hu, Ms, Rt & Sh Serum Proteins) 1:1,000 for 60 min at RT. Secondary antibody: Anti-Goat IgG (DONKEY) Peroxidase Conjugated Antibody 1:40,000 in MB-070 for 30 min at RT. Predicted/Observed Size: 25 and 50 kDa for Rabbit IgG and Serum, 25 kDa for F(c) and F(ab), 70 and 23 kDa for IgM. Rabbit F(c) migrates slightly higher.



ATTO ® dyes can be used for multicolor immunofluorescent detection with low background and high signal. Examples shown are: A. Tubulin in PtK2- male Rat Kangaroo Kidney Epithelial Cells was detected using ATTO 532 labeled secondary antibody. B. Muscle alpha-actin was stained with a mouse primary antibody and ATTO 488 anti-mouse IgG (green) while Cytokeratin was stained with polyclonal rabbit anti-cytokeratin and ATTO 647N anti-rabbit IgG (red). C. HUVEC (Human umbilical vein endothelial cells) were stained with anti- Vimentin-ATTO 532 (green), anti-E-Cadherin-ATTO 655 (red) and DAPI (blue). D. Rat colon sections were stained with Anti-Aquaporin 3-ATTO 594 antibody. Hoechst 33342 (blue) is used as counterstain. Images provided courtesy of Dr. Jörg Reichwein, ATTO-TEC GmbH

Anti-Rabbit IgG (H&L) (ATTO 594 Conjugated) Pre-Adsorbed Secondary Antibody - Background

Anti-Rabbit IgG (H&L) conjugated to ATTO 594 is designed for STED microscopy, FRET, immunofluorescence microscopy, fluorescence based plate assays (FLISA) and fluorescent western blotting. This product is also suitable for multiplex analysis, including multicolor imaging, utilizing various commercial platforms.