

Anti-Rat IgG (H&L) (ATTO 488 Conjugated) Pre-Adsorbed Secondary Antibody
Goat Polyclonal, ATTO 488
Catalog # ASR3273**Specification****Anti-Rat IgG (H&L) (ATTO 488 Conjugated) Pre-Adsorbed Secondary Antibody - Product Information**

Description	Anti-RAT IgG (H&L) (GOAT) Antibody ATTO 488 Conjugated (Min X Bv Ch Gt GP Ham Hs Hu Ms Rb & Sh Serum Proteins)
Host	Goat
Conjugate	ATTO 488
FP Value	2.5 moles ATTO 488 per mole of IgG
Target Species	Rat
Clonality	Polyclonal
Application	WB, IF
Application Note	FLISA >1:20,000;IF Microscopy >1:5,000;Western Blot >1:10,000
Physical State	Lyophilized
Host Isotype	IgG
Target Isotype	IgG (H&L)
Buffer	0.02 M Potassium Phosphate, 0.15 M Sodium Chloride, pH 7.2
Immunogen	Rat IgG whole molecule
Reconstitution Volume	500 µL
Reconstitution Buffer	Restore with deionized water (or equivalent)
Stabilizer	10 mg/mL Bovine Serum Albumin (BSA) - Immunoglobulin and Protease free
Preservative	0.01% (w/v) Sodium Azide

Anti-Rat IgG (H&L) (ATTO 488 Conjugated) Pre-Adsorbed Secondary Antibody - Additional Information**Shipping Condition**

Ambient

Purity

Rat IgG (H&L) Antibody ATTO 488 was prepared from monospecific antiserum by immunoaffinity chromatography using Rat IgG coupled to agarose beads followed by solid phase adsorption(s) to remove any unwanted reactivities. Assay by immunoelectrophoresis resulted in a single precipitin arc against anti-Goat Serum, Rat IgG and Rat Serum. No reaction was observed against Bovine, Chicken, Goat, Guinea Pig, Hamster, Horse, Human, Mouse, Rabbit and Sheep Serum Proteins. This antibody will react with heavy chains of rat IgG and with light chains of most rat immunoglobulins.

Storage Condition

Store vial at 4° C prior to restoration. For extended storage aliquot contents and freeze at -20° C or below. Avoid cycles of freezing and thawing. Centrifuge product if not completely clear after standing at room temperature. This product is stable for several weeks at 4° C as an undiluted

liquid. Dilute only prior to immediate use.

Precautions Note

This product is for research use only and is not intended for therapeutic or diagnostic applications.

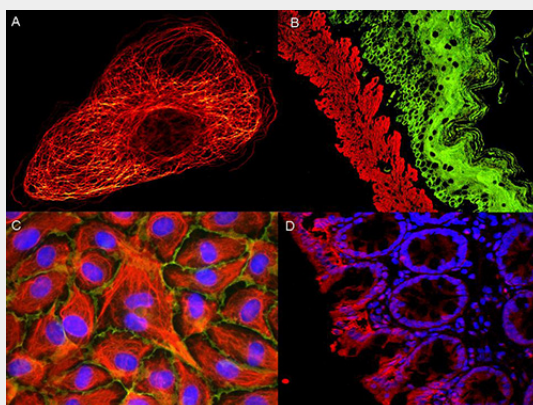
Anti-Rat IgG (H&L) (ATTO 488 Conjugated) Pre-Adsorbed Secondary Antibody - Protein Information

Anti-Rat IgG (H&L) (ATTO 488 Conjugated) Pre-Adsorbed Secondary Antibody - Protocols

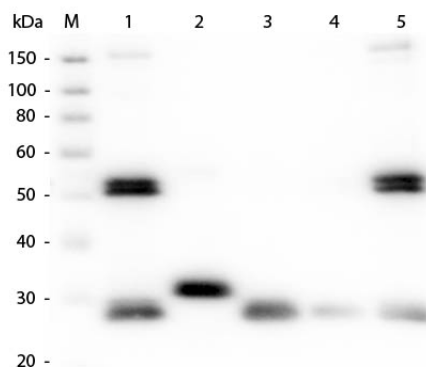
Provided below are standard protocols that you may find useful for product applications.

- [Western Blot](#)
- [Blocking Peptides](#)
- [Dot Blot](#)
- [Immunohistochemistry](#)
- [Immunofluorescence](#)
- [Immunoprecipitation](#)
- [Flow Cytometry](#)
- [Cell Culture](#)

Anti-Rat IgG (H&L) (ATTO 488 Conjugated) Pre-Adsorbed Secondary Antibody - Images



ATTO ® dyes can be used for multicolor immunofluorescent detection with low background and high signal. Examples shown are: A. Tubulin in PtK2- male Rat Kangaroo Kidney Epithelial Cells was detected using ATTO 532 labeled secondary antibody. B. Muscle alpha-actin was stained with a mouse primary antibody and ATTO 488 anti-mouse IgG (green) while Cytokeratin was stained with polyclonal rabbit anti-cytokeratin and ATTO 647N anti-rabbit IgG (red). C. HUVEC (Human umbilical vein endothelial cells) were stained with anti- Vimentin-ATTO 532 (green), anti-E-Cadherin-ATTO 655 (red) and DAPI (blue). D. Rat colon sections were stained with Anti-Aquaporin 3-ATTO 594 antibody. Hoechst 33342 (blue) is used as counterstain. Images provided courtesy of Dr. Jörg Reichwein, ATTO-TEC GmbH



Western Blot of Anti-Rat IgG (H&L) (GOAT) Antibody (Min X Bv Ch Gt GP Ham Hs Hu Ms Rb & Sh Serum Proteins) . Lane M: 3 μ l Molecular Ladder. Lane 1: Rat IgG whole molecule . Lane 2: Rat IgG F(c) Fragment . Lane 3: Rat IgG F(ab) Fragment . Lane 4: Rat IgM Whole Molecule . Lane 5: Rat Serum . All samples were reduced. Load: 50 ng per lane. Block: MB-070 for 30 min at RT. Primary Antibody: Anti-Rat IgG (H&L) (GOAT) Antibody (Min X Bv Ch Gt GP Ham Hs Hu Ms Rb & Sh Serum Proteins) 1:1,000 for 60 min at RT. Secondary Antibody: Anti-Goat IgG (DONKEY) Peroxidase Conjugated Antibody 1:40,000 in MB-070 for 30 min at RT. Predicted/Obsevered Size: 25 and 55 kDa for Rat IgG and Serum, 25 kDa for F(c) and F(ab), 78 and 25 kDa for IgM. Rat F(c) migrates slightly higher.

Anti-Rat IgG (H&L) (ATTO 488 Conjugated) Pre-Adsorbed Secondary Antibody - Background

Anti-Rat IgG (H&L) conjugated to ATTO 488 is designed for STED microscopy, FRET, immunofluorescence microscopy, fluorescence based plate assays (FLISA) and fluorescent western blotting. This product is also suitable for multiplex analysis, including multicolor imaging, utilizing various commercial platforms.