

**Anti-Human IL-8 Secondary Antibody**  
**Rabbit Polyclonal, Unconjugated**  
**Catalog # ASR3289**

**Specification**

---

**Anti-Human IL-8 Secondary Antibody - Product Information**

Description	<b>Anti-Human IL-8 (RABBIT) Antibody</b>
Host	<b>Rabbit</b>
Conjugate	<b>Unconjugated</b>
Target Species	<b>Human</b>
Reactivity	<b>Human</b>
Clonality	<b>Polyclonal</b>
Application	<b>WB, IP, E, IC</b>
Application Note	<b>ELISA 1:1,000-1:5,000;Western Blot 1:500-1:2,000;Immunochemistry 1:400-1:800ImmunoPrecipitation:1:400-1:800</b>
Physical State	<b>Liquid (sterile filtered)</b>
Host Isotype	<b>Antiserum</b>
Buffer	<b>None</b>
Immunogen	<b>The whole rabbit serum was prepared by repeated immunizations with recombinant human IL-8 produced in E.coli.</b>
Stabilizer	<b>None</b>
Preservative	<b>None</b>

**Anti-Human IL-8 Secondary Antibody - Additional Information**

**Shipping Condition**

Dry Ice

**Purity**

Anti-IL 8 antiserum has been heated to 56°C for 30 minutes. The antiserum detects recombinant and native IL-8 present in body fluids and cell supernatants in ELISA. Although likely to be functional, this antiserum has not been evaluated in other assays, including neutralization and immunohistochemistry.

**Storage Condition**

Store anti-IL8 antibody at -20° C prior to opening. Aliquot contents and freeze at -20° C or below for extended storage. Avoid cycles of freezing and thawing. Centrifuge product if not completely clear after standing at room temperature. This product is stable for several weeks at 4° C as an undiluted liquid. Dilute only prior to immediate use.

**Precautions Note**

This product is for research use only and is not intended for therapeutic or diagnostic applications.

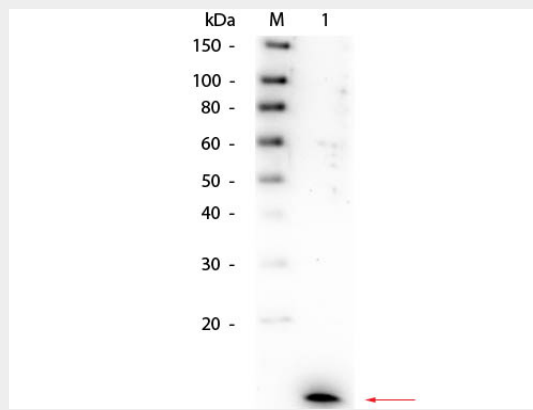
**Anti-Human IL-8 Secondary Antibody - Protein Information**

## Anti-Human IL-8 Secondary Antibody - Protocols

Provided below are standard protocols that you may find useful for product applications.

- [Western Blot](#)
- [Blocking Peptides](#)
- [Dot Blot](#)
- [Immunohistochemistry](#)
- [Immunofluorescence](#)
- [Immunoprecipitation](#)
- [Flow Cytometry](#)
- [Cell Culture](#)

## Anti-Human IL-8 Secondary Antibody - Images



Western Blot of Rabbit anti-Human IL-8 Antibody. Lane 1: Recombinant Human IL-8. Load: 50 ng per lane. Primary antibody: Rabbit anti-Human IL-8 Antibody 1:1,000 overnight at 4°C. Secondary antibody: HRP Goat-a-rabbit secondary antibody at 1:40,000 for 30 min at RT. Block: MB-070 for 30 min at RT. Predicted/Observed size: 11 kDa, 11 kDa for Human IL-8.

## Anti-Human IL-8 Secondary Antibody - Background

Interleukin-8 is a chemokine produced by macrophages and other cell types such as epithelial cells. Human IL-8 (CXCL8) antibody is commonly used in many experiments focused around inflammation. Anti-IL-8 antibody is ideal for investigators involved in Cancer, Immunology and Cardiovascular research.