

**Chicken IgG F(c) Biotin**  
**Catalog # ASR3317****Specification**

---

**Chicken IgG F(c) Biotin - Product Information**

Description	<b>CHICKEN IgG F(c) fragment Biotin conjugated</b>
Conjugate	<b>Biotin</b>
Physical State	<b>Lyophilized</b>
Host Isotype	<b>IgG F(c)</b>
Buffer	<b>0.02 M Potassium Phosphate, 0.15 M Sodium Chloride, pH 7.2</b>
Species of Origin	<b>Chicken</b>
Reconstitution Volume	<b>1.0 mL</b>
Reconstitution Buffer	<b>Restore with deionized water (or equivalent)</b>
Stabilizer	<b>10 mg/mL Bovine Serum Albumin (BSA) - Immunoglobulin and Protease free</b>
Preservative	<b>0.01% (w/v) Sodium Azide</b>

**Chicken IgG F(c) Biotin - Additional Information****Shipping Condition**

Ambient

**Purity**

This product was prepared from normal serum delipidation, salt fractionation, ion exchange chromatography followed by papain digestion and extensive dialysis against the buffer stated above. Assay by immunoelectrophoresis resulted in a single precipitin arc against anti-biotin, anti-Chicken IgG, anti-Chicken IgG F(c) and anti-Chicken Serum. No reaction was observed against anti-Chicken IgG F(ab')<sub>2</sub> or anti-Papain.

**Storage Condition**

Store vial at 4° C prior to restoration. For extended storage aliquot contents and freeze at -20° C or below. Avoid cycles of freezing and thawing. Centrifuge product if not completely clear after standing at room temperature. This product is stable for several weeks at 4° C as an undiluted liquid. Dilute only prior to immediate use.

**Precautions Note**

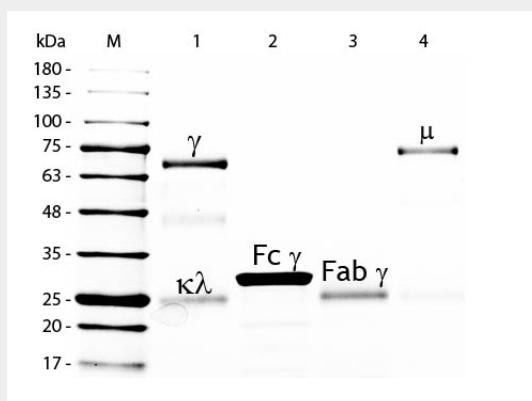
This product is for research use only and is not intended for therapeutic or diagnostic applications.

**Chicken IgG F(c) Biotin - Protein Information****Chicken IgG F(c) Biotin - Protocols**

Provided below are standard protocols that you may find useful for product applications.

- [Western Blot](#)
- [Blocking Peptides](#)
- [Dot Blot](#)
- [Immunohistochemistry](#)
- [Immunofluorescence](#)
- [Immunoprecipitation](#)
- [Flow Cytometry](#)
- [Cell Culture](#)

### Chicken IgG F(c) Biotin - Images



SDS-PAGE of Chicken IgG F(c) Fragment Biotin Conjugated . Lane M: 5  $\mu$ L Opal Prestained Marker . Lane 1: Reduced Chicken IgG Whole Molecule . Lane 2: Reduced Chicken IgG F(c) Fragment Biotin Conjugated . Lane 3: Reduced Chicken IgG F(ab) Fragment . Lane 4: Reduced Chicken IgM Whole Molecule . Load: 1  $\mu$ g per lane. Predicted/Observed size: IgG at 72 and 25 kDa; F(c) at 25 kDa; F(ab) at 25 kDa; IgM at 75 kDa. Observed F(c) Fragment migrates slightly higher. Other bands: Chicken IgG heavy chain alternative splicing variant at approximately 40 kDa in Lane 1.