

Anti-Swine IgG (H&L) (Fluorescein Conjugated) Secondary Antibody
Rabbit Polyclonal, Fluorescein (FITC)
Catalog # ASR3412**Specification****Anti-Swine IgG (H&L) (Fluorescein Conjugated) Secondary Antibody - Product Information**

Description	Anti-SWINE IgG (H&L) (RABBIT) Antibody Fluorescein Conjugated
Host	Rabbit
Conjugate	Fluorescein (FITC)
FP Value	2.5 moles Fluorescein (FITC) per mole of IgG
Target Species	Swine
Clonality	Polyclonal
Application	IF, FC
Application Note	FLISA 1:10,000-1:50,000;IF Microscopy 1:1,000-1:5,000;FlowCytometry 1:500-1:2,500
Physical State	Lyophilized
Host Isotype	IgG
Target Isotype	IgG (H&L)
Buffer	0.01 M Sodium Phosphate, 0.15 M Sodium Chloride, pH 7.2
Immunogen	Swine IgG whole molecule
Reconstitution Volume	2.0 mL
Reconstitution Buffer	Restore with deionized water (or equivalent)
Stabilizer	10 mg/mL Bovine Serum Albumin (BSA) - Immunoglobulin and Protease free
Preservative	0.01% (w/v) Sodium Azide

Anti-Swine IgG (H&L) (Fluorescein Conjugated) Secondary Antibody - Additional Information**Shipping Condition**

Ambient

Purity

This product is an IgG fraction antibody purified from monospecific antiserum by a multi-step process which includes delipidation, salt fractionation and ion exchange chromatography followed by extensive dialysis against the buffer stated above. Assay by immunoelectrophoresis resulted in a single precipitin arc against anti-Rabbit Serum, Swine IgG and Swine Serum.

Storage Condition

Store vial at 4° C prior to restoration. For extended storage aliquot contents and freeze at -20° C or below. Avoid cycles of freezing and thawing. Centrifuge product if not completely clear after standing at room temperature. This product is stable for several weeks at 4° C as an undiluted liquid. Dilute only prior to immediate use.

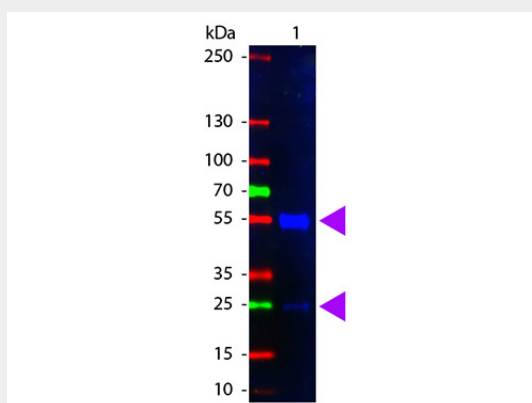
Precautions Note

This product is for research use only and is not intended for therapeutic or diagnostic applications.

Anti-Swine IgG (H&L) (Fluorescein Conjugated) Secondary Antibody - Protein Information**Anti-Swine IgG (H&L) (Fluorescein Conjugated) Secondary Antibody - Protocols**

Provided below are standard protocols that you may find useful for product applications.

- [Western Blot](#)
- [Blocking Peptides](#)
- [Dot Blot](#)
- [Immunohistochemistry](#)
- [Immunofluorescence](#)
- [Immunoprecipitation](#)
- [Flow Cytometry](#)
- [Cell Culture](#)

Anti-Swine IgG (H&L) (Fluorescein Conjugated) Secondary Antibody - Images

Western Blot of Fluorescein Conjugated Rabbit anti-Swine IgG antibody. Lane 1: Swine IgG. Lane 2: none. Load: 100 ng per lane. Primary antibody: none. Secondary antibody: Fluorescein swine secondary antibody at 1:1,000 for 60 min at RT. Block: MB-070 for 30 min at RT. Predicted/Observed size: 55 kDa, 28 kDa for Rabbit IgG. Other band(s): none.

Anti-Swine IgG (H&L) (Fluorescein Conjugated) Secondary Antibody - Background

This product is designed for immunofluorescence microscopy, fluorescence based plate assays (FLISA) and fluorescent western blotting. This product is also suitable for multiplex analysis, including multicolor imaging, utilizing various commercial platforms.