

**Anti-Sheep IgG (H&L) Secondary Antibody**  
**Donkey Polyclonal, Unconjugated**  
**Catalog # ASR3545****Specification**

---

**Anti-Sheep IgG (H&L) Secondary Antibody - Product Information**

Description	<b>Anti-SHEEP IgG (H&amp;L) (DONKEY) Antibody</b>
Host	<b>Donkey</b>
Conjugate	<b>Unconjugated</b>
Target Species	<b>Sheep</b>
Clonality	<b>Polyclonal</b>
Application	<b>,1,2,10,</b>
Application Note	<b>ELISA 1:20,000-1:100,000;Western Blot 1:2,000-1:10,000;Immunohistochemistry 1:1,000-1:5,000</b>
Physical State	<b>Lyophilized</b>
Host Isotype	<b>IgG</b>
Target Isotype	<b>IgG (H&amp;L)</b>
Buffer	<b>0.01 M Sodium Phosphate, 0.15 M Sodium Chloride, pH 7.2</b>
Immunogen	<b>Sheep IgG whole molecule</b>
Reconstitution Volume	<b>5.0 mL</b>
Reconstitution Buffer	<b>Restore with deionized water (or equivalent)</b>
Stabilizer	<b>None</b>
Preservative	<b>0.01% (w/v) Sodium Azide</b>

**Anti-Sheep IgG (H&L) Secondary Antibody - Additional Information****Shipping Condition**

Ambient

**Purity**

Sheep IgG (H&L) Antibody is an IgG fraction antibody purified from monospecific antiserum by a multi-step process which includes delipidation, salt fractionation and ion exchange chromatography followed by extensive dialysis against the buffer stated above. Assay by immunoelectrophoresis resulted in a single precipitin arc against anti-Donkey Serum, Sheep IgG and Sheep Serum. This antibody will detect intact and immunoglobulin components from Sheep.

**Storage Condition**

Store vial at 4° C prior to restoration. For extended storage aliquot contents and freeze at -20° C or below. Avoid cycles of freezing and thawing. Centrifuge product if not completely clear after standing at room temperature. This product is stable for several weeks at 4° C as an undiluted liquid. Dilute only prior to immediate use.

**Precautions Note**

This product is for research use only and is not intended for therapeutic or diagnostic applications.

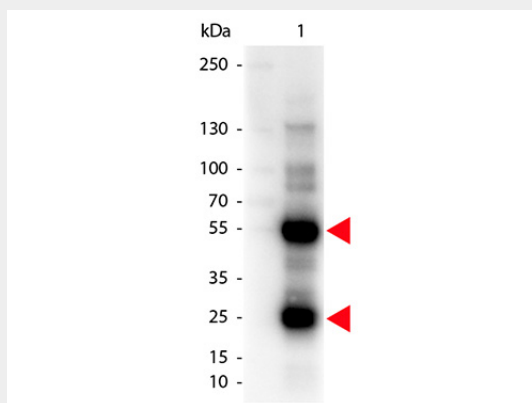
**Anti-Sheep IgG (H&L) Secondary Antibody - Protein Information**

## Anti-Sheep IgG (H&L) Secondary Antibody - Protocols

Provided below are standard protocols that you may find useful for product applications.

- [Western Blot](#)
- [Blocking Peptides](#)
- [Dot Blot](#)
- [Immunohistochemistry](#)
- [Immunofluorescence](#)
- [Immunoprecipitation](#)
- [Flow Cytometry](#)
- [Cell Culture](#)

## Anti-Sheep IgG (H&L) Secondary Antibody - Images



Western Blot of Donkey anti-Sheep IgG Antibody. Lane 1: Sheep IgG. Lane 2: None. Load: 50 ng per lane. Primary antibody: Sheep antibody at 1,000 overnight at 4°C. Secondary antibody: Peroxidase donkey secondary antibody at 1:40,000 for 30 min at RT. Block: MB-070 for 30 min at RT. Predicted/Observed size: 28 & 55 kDa, 28 & 55 kDa for Sheep IgG. Other band(s): Sheep IgG splice variants and isoforms.

## Anti-Sheep IgG (H&L) Secondary Antibody - Background

Anti-Sheep IgG unconjugated antibody was generated in donkey and detects specifically sheep IgG. This primary unconjugated anti-Sheep antibody is ideal for investigators who routinely perform titration assays, western-blot, immunoprecipitation and more generally immunoassays.