

Chicken IgG (BULK ORDER)
Catalog # ASR3559**Specification**

Chicken IgG (BULK ORDER) - Product Information

Description	CHICKEN IgG whole molecule (BULK ORDER)
Conjugate	Unconjugated
Physical State	Lyophilized
Host Isotype	IgG
Buffer	0.02 M Potassium Phosphate, 0.15 M Sodium Chloride, pH 7.2
Species of Origin	Chicken
Reconstitution Volume	1.0 mL
Reconstitution Buffer	Restore with deionized water (or equivalent)
Stabilizer	None
Preservative	0.01% (w/v) Sodium Azide

Chicken IgG (BULK ORDER) - Additional Information**Shipping Condition**

Ambient

Purity

Chicken IgG whole molecule was prepared from normal serum by a multi-step process which includes delipidation, salt fractionation and ion exchange chromatography followed extensive dialysis against the buffer stated above. Chicken IgG whole molecule assayed by immunoelectrophoresis resulted in a single precipitin arc against anti-Chicken IgG and anti-Chicken Serum.

Storage Condition

Store vial at 4° C prior to restoration. Restore with 1.0 mL of deionized water (or equivalent). For extended storage aliquot contents and freeze at -20° C or below. Avoid cycles of freezing and thawing. Centrifuge product if not completely clear after standing at room temperature. This product is stable for several weeks at 4° C as an undiluted liquid. Dilute only prior to immediate use. Expiration date is one (1) year from date of restoration.

Precautions Note

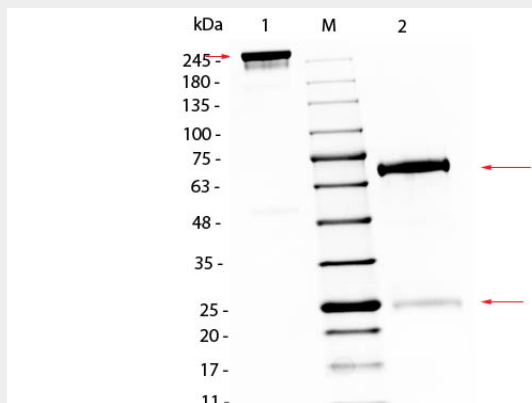
This product is for research use only and is not intended for therapeutic or diagnostic applications.

Chicken IgG (BULK ORDER) - Protein Information**Chicken IgG (BULK ORDER) - Protocols**

Provided below are standard protocols that you may find useful for product applications.

- [Western Blot](#)
- [Blocking Peptides](#)
- [Dot Blot](#)
- [Immunohistochemistry](#)
- [Immunofluorescence](#)
- [Immunoprecipitation](#)
- [Flow Cytometry](#)
- [Cell Culture](#)

Chicken IgG (BULK ORDER) - Images



SDS PAGE of Chicken IgG Whole Molecule. Lane 1: Non-Reduced Chicken IgG Whole Molecule. Lane 2: 5 µL Opal Prestained Marker . Lane 3: Reduced Chicken IgG Whole Molecule. Load: 1 µg per lane. Predicted/Observed size: Non-Reduced at 160kDa/Observed at 245 kDa; Reduced at 72, 25 kDa. Non-reduced IgG migrates slightly higher.

Chicken IgG (BULK ORDER) - Background

Secreted as part of the adaptive immune response by plasma B cells, immunoglobulin G constitutes 75% of serum immunoglobulins. Immunoglobulin G binds to viruses, bacteria, as well as fungi and facilitates their destruction or neutralization via agglutination (and thereby immobilizing them), activation of the complement cascade, and opsinization for phagocytosis. The whole IgG molecule possesses both the F(c) region, recognized by high-affinity Fc receptor proteins, as well as the F(ab) region possessing the epitope-recognition site. Both heavy and light chains of the antibody molecule are present.