

Anti-LUCIFERASE (GOAT) Antibody
Luciferase Antibody
Catalog # ASR3610**Specification****Anti-LUCIFERASE (GOAT) Antibody - Product Information**

Host	Goat
Conjugate	Unconjugated
Clonality	Polyclonal
Application	WB, E, I, LCI
Application Note	Anti-Luciferase Antibody has been tested by western blot and is suitable in ELISA. This product can be assayed against 1.0 ug of Luciferase [Firefly] in a standard ELISA using Peroxidase conjugated Affinity Purified anti-Goat IgG [H&L] (Goat) code #611-1302 and (ABTS (2,2'-azino-bis-[3-ethylbenthiazoline-6-sulfonic acid]) code #ABTS-100 as a substrate for 30 minutes at room temperature. A working dilution of 1:20,000 to 1:100,000 of the reconstitution concentration is suggested for this product.
Physical State	Lyophilized
Buffer	0.02 M Potassium Phosphate, 0.15 M Sodium Chloride, pH 7.2
Immunogen	Luciferase [Firefly]
Reconstitution Volume	2.0 mL
Reconstitution Buffer	Restore with deionized water (or equivalent)
Preservative	0.01% (w/v) Sodium Azide

Anti-LUCIFERASE (GOAT) Antibody - Additional Information**Purity**

This product was prepared from monospecific antiserum by a delipidation and defibrination. Assay by immunoelectrophoresis resulted in a single precipitin arc against anti-goat serum, purified and partially purified Luciferase [Firefly]. No reactivity is observed against Sea pansy (Renilla reniformis) luciferase.

Storage Condition

Store vial at 4° C prior to restoration. For extended storage aliquot contents and freeze at -20° C or below. Avoid cycles of freezing and thawing. Centrifuge product if not completely clear after standing at room temperature. This product is stable for several weeks at 4° C as an undiluted liquid. Dilute only prior to immediate use.

Precautions Note

This product is for research use only and is not intended for therapeutic or diagnostic applications.

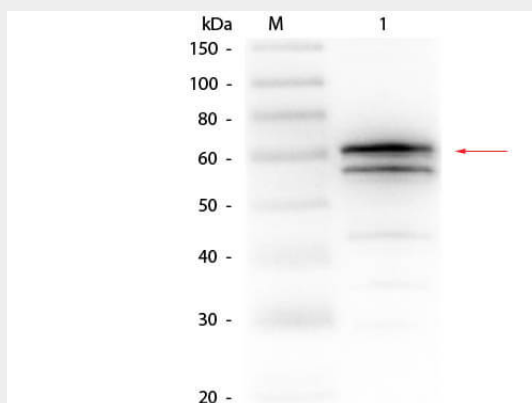
Anti-LUCIFERASE (GOAT) Antibody - Protein Information

Anti-LUCIFERASE (GOAT) Antibody - Protocols

Provided below are standard protocols that you may find useful for product applications.

- [Western Blot](#)
- [Blocking Peptides](#)
- [Dot Blot](#)
- [Immunohistochemistry](#)
- [Immunofluorescence](#)
- [Immunoprecipitation](#)
- [Flow Cytometry](#)
- [Cell Culture](#)

Anti-LUCIFERASE (GOAT) Antibody - Images



Western Blot of Goat anti-Luciferase Antibody. Lane 1: Luciferase (Firefly). Load: 50 ng per lane. Primary antibody: Goat anti-Luciferase Antibody at 1:1,000 overnight at 4°C. Secondary antibody: HRP goat secondary antibody at 1:40,000 for 30 min at RT. Block: MB-070 for 30 min at RT. Predicted/Observed size: 60 kDa, 60 kDa for Luciferase.

Anti-LUCIFERASE (GOAT) Antibody - Background

Anti luciferase Antibody recognizes luciferase that is commonly used in biological research as a reporter to assess the transcriptional activity in cells that are transfected with a genetic construct containing the luciferase gene under the control of a promoter of interest. Luciferase can also be used to detect the level of cellular ATP in cell viability assays or for kinase activity assays. Additionally proluminescent molecules that are converted to luciferin upon activity of a particular enzyme can be used to detect enzyme activity in coupled or two-step luciferase assays. Such substrates have been used to detect caspase activity and cytochrome P450 activity, among others.