

Anti-RFX5 (N-terminal) (RABBIT) Antibody
RFX5 Antibody
Catalog # ASR3677**Specification**

Anti-RFX5 (N-terminal) (RABBIT) Antibody - Product Information

Host	Rabbit
Conjugate	Unconjugated
Target Species	Human
Reactivity	Human
Clonality	Polyclonal
Application	WB, E, I, LCI
Application Note	Anti-RFX5 has been tested in western blot. This product was also tested in a gel supershift assay and found to be reactive against RFX5 complexes using 0.5 to 1.0 µl per assay.
Physical State	Liquid (sterile filtered)
Buffer	0.02 M Potassium Phosphate, 0.15 M Sodium Chloride, pH 7.2
Immunogen	RFX5 (N-terminal specific) peptide corresponding to a region near the N-terminus of the human protein conjugated to Keyhole Limpet Hemocyanin (KLH).
Preservative	0.01% (w/v) Sodium Azide

Anti-RFX5 (N-terminal) (RABBIT) Antibody - Additional Information**Gene ID** 5993**Other Names**
5993**Purity**

This product was prepared from monospecific antiserum by delipidation and defibrination. Anti-RFX5 (N-terminal specific) may react with unknown minor bands at 55 kDa and 85 kDa.

Storage Condition

Store vial at -20° C prior to opening. Aliquot contents and freeze at -20° C or below for extended storage. Avoid cycles of freezing and thawing. Centrifuge product if not completely clear after standing at room temperature. This product is stable for several weeks at 4° C as an undiluted liquid. Dilute only prior to immediate use.

Precautions Note

This product is for research use only and is not intended for therapeutic or diagnostic applications.

Anti-RFX5 (N-terminal) (RABBIT) Antibody - Protein Information

Name RFX5**Function**

Activates transcription from class II MHC promoters. Recognizes X-boxes. Mediates cooperative binding between RFX and NF-Y. RFX binds the X1 box of MHC-II promoters.

Cellular Location

Nucleus.

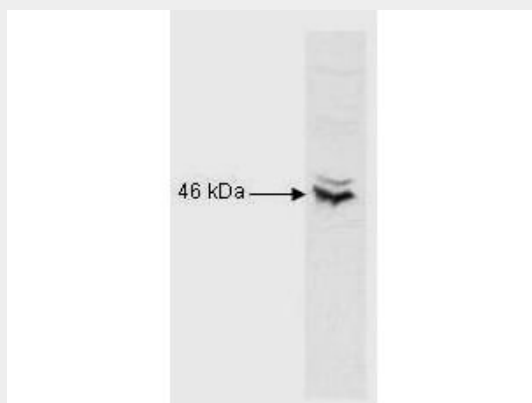
Tissue Location

Ubiquitous.

Anti-RFX5 (N-terminal) (RABBIT) Antibody - Protocols

Provided below are standard protocols that you may find useful for product applications.

- [Western Blot](#)
- [Blocking Peptides](#)
- [Dot Blot](#)
- [Immunohistochemistry](#)
- [Immunofluorescence](#)
- [Immunoprecipitation](#)
- [Flow Cytometry](#)
- [Cell Culture](#)

Anti-RFX5 (N-terminal) (RABBIT) Antibody - Images

Western Blot of Rabbit Anti-RFX5 antibody. Lane 1: nuclear extract lysates. Load: 10 µg per lane. Primary antibody: RFX5 antibody at 1:1000 for overnight at 4°C. Secondary antibody: HRP Goat-a-Rabbit IgG secondary antibody at 1:5,000 for 45 min at RT. Block: 5% BLOTTO overnight at 4°C. Predicted/Observed size: 65 kDa, 46 kDa for RFX5. Other band(s): none.

Anti-RFX5 (N-terminal) (RABBIT) Antibody - Background

DNA-binding protein RFX5 activates transcription from class II MHC promoters and recognizes X-boxes. It mediates cooperative binding between RFX and NF-Y. RFX binds the X1 box of MHC-II promoters. RFX5 may be associated with Bare Lymphocyte Syndrome Type II Complement group C and Mhc Class II Deficiency. Anti-RFX5 Antibody is useful for researchers interested in Transcription factors, Tuberculosis, and Allograft rejection.