

Anti-OVALBUMIN (RABBIT) Antibody
Ovalbumin Antibody
Catalog # ASR3777**Specification**

Anti-OVALBUMIN (RABBIT) Antibody - Product Information

| | |
|-----------------------|---|
| Host | Rabbit |
| Conjugate | Unconjugated |
| Target Species | Chicken |
| Reactivity | Chicken |
| Clonality | Polyclonal |
| Application | WB, E, IP, I, LCI |
| Application Note | Anti-ovalbumin Antibody has been tested by western blot and is suitable for ELISA and IP. Researchers should determine optimal titers for applications that are not stated below. |
| Physical State | Lyophilized |
| Buffer | 0.02 M Potassium Phosphate, 0.15 M Sodium Chloride, pH 7.2 |
| Immunogen | Ovalbumin [Hen Egg White] Anti-Ovalbumin Antibody was produced by repeated immunizations with hen egg white Ovalbumin protein. |
| Reconstitution Volume | 2.0 mL |
| Reconstitution Buffer | Restore with deionized water (or equivalent) |
| Preservative | 0.01% (w/v) Sodium Azide |

Anti-OVALBUMIN (RABBIT) Antibody - Additional Information**Gene ID** 396058**Other Names**
396058**Purity**

Ovalbumin Antibody is an antiserum prepared from monospecific antiserum by a delipidation and defibrination. Assay by immunoelectrophoresis resulted in a single precipitin arc against anti-rabbit serum, purified and partially purified Ovalbumin [Hen Egg White]. Cross reactivity against Ovalbumin from other tissues and species may occur but have not been specifically determined.

Storage Condition

Store vial at 4° C prior to restoration. For extended storage aliquot contents and freeze at -20° C or below. Avoid cycles of freezing and thawing. Centrifuge product if not completely clear after standing at room temperature. This product is stable for several weeks at 4° C as an undiluted liquid. Dilute only prior to immediate use.

Precautions Note

This product is for research use only and is not intended for therapeutic or diagnostic applications.

Anti-OVALBUMIN (RABBIT) Antibody - Protein Information

Name SERPINB14

Function

Non-inhibitory serpin. Storage protein of egg white.

Cellular Location

Secreted.

Tissue Location

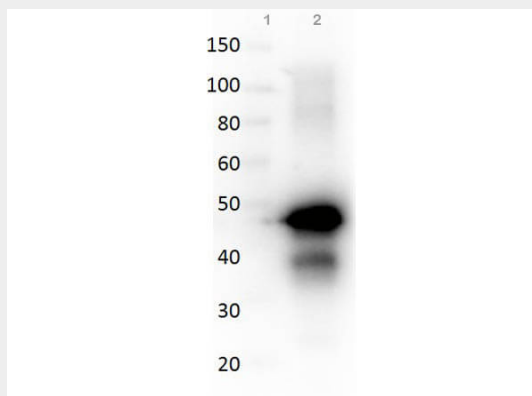
Major protein of egg white. Expressed in the magnum of the oviduct (at protein level)
(PubMed:25436390)

Anti-OVALBUMIN (RABBIT) Antibody - Protocols

Provided below are standard protocols that you may find useful for product applications.

- [Western Blot](#)
- [Blocking Peptides](#)
- [Dot Blot](#)
- [Immunohistochemistry](#)
- [Immunofluorescence](#)
- [Immunoprecipitation](#)
- [Flow Cytometry](#)
- [Cell Culture](#)

Anti-OVALBUMIN (RABBIT) Antibody - Images



Western Blot of Rabbit anti-OVALBUMIN (Hen Egg White) antibody. Lane 1: Molecular Weight. Lane 2: Reduced Ovalbumin. Load: 50 ng. Primary antibody: Ovalbumin antibody at 1:1,000 overnight at 4°C. Secondary antibody: Peroxidase rabbit secondary antibody (p/n 611-103-122) at 1:40,000 for 30 min at RT. Block: Blocking Buffer for Fluorescent Western Blotting (p/n MB-070) for 30 min at RT. Predicted/Observed size: 45 kDa for Ovalbumin.

Anti-OVALBUMIN (RABBIT) Antibody - Background

Anti-Ovalbumin Antibody detects Ovalbumin. Ovalbumin is the main protein found in egg white,

making up 60-65% of the total protein. It is a non-inhibitory serpin. It is the storage protein of egg white. Anti-Ovalbumin Antibody is ideal for investigators involved in Cell Signaling, Immunology and Signal Transduction research.