

**Anti-BETA GALACTOSIDASE (E.coli) (RABBIT) Antibody**  
**Beta Galactosidase Antibody**  
**Catalog # ASR3780****Specification**

---

**Anti-BETA GALACTOSIDASE (E.coli) (RABBIT) Antibody - Product Information**

Host	Rabbit
Conjugate	Unconjugated
Target Species	Escherichia coli
Clonality	Polyclonal
Application	WB, IHC, E, I, LCI
Application Note	Anti-Beta-Gal Antibody has been tested by western blot and is suitable for immunoblotting (western or dot blot), ELISA, immunoprecipitation and most immunological methods requiring high titer and specificity.
Physical State	Lyophilized
Buffer	0.02 M Potassium Phosphate, 0.15 M Sodium Chloride, pH 7.2
Immunogen	Beta Galactosidase (E.coli)
Reconstitution Volume	2.0 mL
Reconstitution Buffer	Restore with deionized water (or equivalent)
Preservative	0.01% (w/v) Sodium Azide

**Anti-BETA GALACTOSIDASE (E.coli) (RABBIT) Antibody - Additional Information****Gene ID** 945006**Purity**

Beta-Galactosidase Antibody was prepared from monospecific antiserum by a delipidation and defibrination. Assay by immunoelectrophoresis resulted in a single precipitin arc against anti-rabbit serum, purified and partially purified Beta Galactosidase [E. coli]. Cross reactivity against Beta Galactosidase from other sources may occur but have not been specifically determined.

**Storage Condition**

Store vial at 4° C prior to restoration. For extended storage aliquot contents and freeze at -20° C or below. Avoid cycles of freezing and thawing. Centrifuge product if not completely clear after standing at room temperature. This product is stable for several weeks at 4° C as an undiluted liquid. Dilute only prior to immediate use.

**Precautions Note**

This product is for research use only and is not intended for therapeutic or diagnostic applications.

**Anti-BETA GALACTOSIDASE (E.coli) (RABBIT) Antibody - Protein Information**

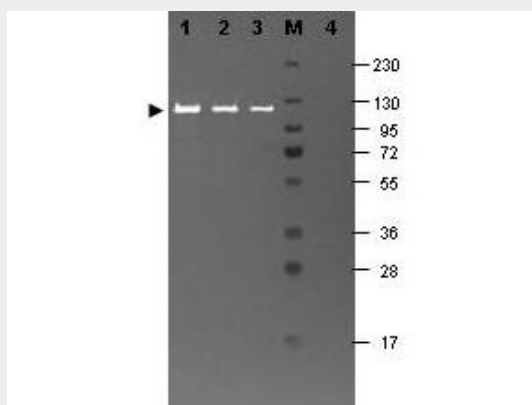
Name lacZ

### Anti-BETA GALACTOSIDASE (E.coli) (RABBIT) Antibody - Protocols

Provided below are standard protocols that you may find useful for product applications.

- [Western Blot](#)
- [Blocking Peptides](#)
- [Dot Blot](#)
- [Immunohistochemistry](#)
- [Immunofluorescence](#)
- [Immunoprecipitation](#)
- [Flow Cytometry](#)
- [Cell Culture](#)

### Anti-BETA GALACTOSIDASE (E.coli) (RABBIT) Antibody - Images



Western blotting using Rockland's Fluorescein conjugated anti-b-Galactosidase antibody shows a band at ~117 kDa (lanes 1 - 3) corresponding to 60 ng, 30 ng and 15 ng, respectively of b-Gal present in partially purified preparations (arrowhead). Lane 4 shows no cross reactivity with proteins present in a non-specific control E.coli lysate. Proteins were resolved on a 4-20% Tris-Glycine gel by SDS-PAGE and transferred to nitrocellulose and blocking using Blocking Buffer for Fluorescent Western Blotting (p/n MB-070). The membrane was probed with fluorescein conjugated anti-b-Galactosidase (p/n 200-4236) diluted to 1:10,000. Reaction occurred for 2 hours at room temperature. Molecular weight estimation was made by comparison to a prestained MW marker in lane M. Fluorescence image was captured using the VersaDoc® Imaging System developed by BIO-RAD. Other detection systems will yield similar results.

### Anti-BETA GALACTOSIDASE (E.coli) (RABBIT) Antibody - Background

Anti Beta Galactosidase Antibody recognizes the enzyme beta galactosidase, or  $\beta$ -galactosidase, that is a component of assays used frequently in genetics, molecular biology (see X-gal) for a blue white screen, and other life sciences. IPTG induces production of  $\beta$ -galactosidase by binding and inhibiting the lac repressor. Since it is highly expressed and accumulated in lysosomes in senescent cells, it is used as a senescence biomarker both in vivo and in vitro in qualitative and quantitative assays, despite its limitations. Anti-beta Galactosidase Antibody is ideal for investigators involved in enzyme research.