

Anti-CATALASE (RABBIT) Antibody
Catalase Antibody
Catalog # ASR3790**Specification**

Anti-CATALASE (RABBIT) Antibody - Product Information

Host	Rabbit
Conjugate	Unconjugated
Target Species	Bovine
Reactivity	Rat, Human, Mouse, Bovine, Sheep
Clonality	Polyclonal
Application	WB, IHC, E, I, LCI
Application Note	Anti-Catalase Antibody has been tested by western blotting and is suitable for IHC and for ELISA. Researchers should determine optimal titers for applications that are not stated below.
Physical State	Lyophilized
Buffer	0.02 M Potassium Phosphate, 0.15 M Sodium Chloride, pH 7.2
Immunogen	Anti-Catalase Antibody was produced by repeated immunizations with bovine liver catalase protein.
Reconstitution Volume	2.0 mL
Reconstitution Buffer	Restore with deionized water (or equivalent)
Preservative	0.01% (w/v) Sodium Azide

Anti-CATALASE (RABBIT) Antibody - Additional Information**Gene ID** 531682**Other Names**
531682**Purity**

Anti-Catalase Antibody was prepared from monospecific antiserum by delipidation and defibrination. Assay by immunoelectrophoresis resulted in a single precipitin arc against anti-rabbit serum, purified and partially purified Catalase [Bovine Liver]. Cross reactivity against Catalase from other tissues and species may occur but has not been specifically determined.

Storage Condition

Store Catalase Antibody at 4° C prior to restoration. For extended storage aliquot antibody and freeze at -20° C or below. Avoid cycles of freezing and thawing. Centrifuge product if not completely clear after standing at room temperature. This product is stable for several weeks at 4° C as an undiluted liquid. Dilute only prior to immediate use.

Precautions Note

This product is for research use only and is not intended for therapeutic or diagnostic applications.

Anti-CATALASE (RABBIT) Antibody - Protein Information

Name CAT

Function

Catalyzes the degradation of hydrogen peroxide (H_2O_2) generated by peroxisomal oxidases to water and oxygen, thereby protecting cells from the toxic effects of hydrogen peroxide (PubMed:10691967). Promotes growth of cells including T-cells, B-cells, myeloid leukemia cells, melanoma cells, mastocytoma cells and normal and transformed fibroblast cells (PubMed:10691967).

Cellular Location

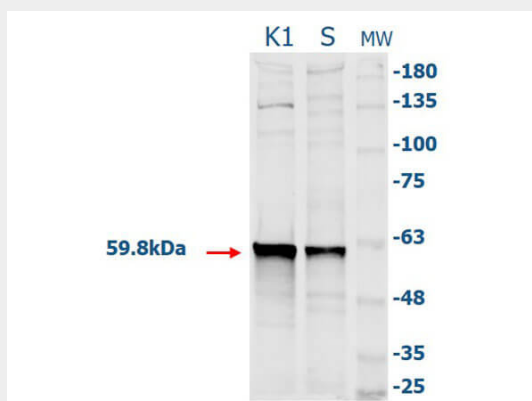
Peroxisome matrix.

Anti-CATALASE (RABBIT) Antibody - Protocols

Provided below are standard protocols that you may find useful for product applications.

- [Western Blot](#)
- [Blocking Peptides](#)
- [Dot Blot](#)
- [Immunohistochemistry](#)
- [Immunofluorescence](#)
- [Immunoprecipitation](#)
- [Flow Cytometry](#)
- [Cell Culture](#)

Anti-CATALASE (RABBIT) Antibody - Images



Western Blot of Rabbit Anti-Catalase (Bovine Liver) Antibody. Lane 1: CHO K1 Lysate 10 μ g. Lane 2: CHO S Lysate 10 μ g. Lane 3: Opal Pre-stained Molecular Weight Marker (p/n MB-210-0500). Primary Antibody: Rabbit Anti-Catalase at 1:500 overnight at 2-8°C. Secondary Antibody: Goat Anti-Rabbit IgG CY5 (p/n 611-110-122) at 1:10,000 for 30 in at RT. Expect: ~59.8kDa.

Anti-CATALASE (RABBIT) Antibody - Background

Anti-Catalase Antibody detects catalase. Catalase is a common enzyme found in nearly all living organisms exposed to oxygen. It catalyzes the decomposition of hydrogen peroxide to water and

oxygen. Catalase is necessary in cells to protect them from the toxic effects of hydrogen peroxide and to promote growth of cells. Anti-Catalase antibody is ideal for investigators involved in Cell Signaling, Neuroscience and Signal Transduction research.