

Anti-TRYPSIN INHIBITOR (RABBIT) Antibody
Trypsin Inhibitor Antibody
Catalog # ASR3811**Specification****Anti-TRYPSIN INHIBITOR (RABBIT) Antibody - Product Information**

Host	Rabbit
Conjugate	Unconjugated
Target Species	Soy Bean
Clonality	Polyclonal
Application	WB, IHC, E, I, LCI
Application Note	Anti-Trypsin Inhibitor has been tested by western blot and is suitable to be assayed against 1.0 ug of Trypsin Inhibitor [Lima Bean] in a standard ELISA using Peroxidase conjugated Affinity Purified anti-Rabbit IgG [H&L] (Goat) code #611-1302 and (ABTS (2,2'-azino-bis-[3-ethylbenthiazoline-6-sulfonic acid]) code #ABTS-100 as a substrate for 30 minutes at room temperature. A working dilution of 1:200 to 1:1,000 of the reconstitution concentration is suggested for this product.
Physical State	Lyophilized
Buffer	0.02 M Potassium Phosphate, 0.15 M Sodium Chloride, pH 7.2
Immunogen	Trypsin Inhibitor [Soy Bean]
Reconstitution Volume	2.0 mL
Reconstitution Buffer	Restore with deionized water (or equivalent)
Preservative	0.01% (w/v) Sodium Azide

Anti-TRYPSIN INHIBITOR (RABBIT) Antibody - Additional Information**Gene ID** 547831**Other Names**
547831**Purity**

This product was prepared from monospecific antiserum by a delipidation and defibrination. Assay by immunoelectrophoresis resulted in a single precipitin arc against anti-rabbit serum, purified and partially purified Trypsin Inhibitor [Soy Bean]. Cross reactivity against Trypsin Inhibitor from other tissues and species may occur but have not been specifically determined.

Storage Condition

Store vial at 4° C prior to restoration. For extended storage aliquot contents and freeze at -20° C or below. Avoid cycles of freezing and thawing. Centrifuge product if not completely clear after standing at room temperature. This product is stable for several weeks at 4° C as an undiluted

liquid. Dilute only prior to immediate use.

Precautions Note

This product is for research use only and is not intended for therapeutic or diagnostic applications.

Anti-TRYPSIN INHIBITOR (RABBIT) Antibody - Protein Information

Name KT13

Function

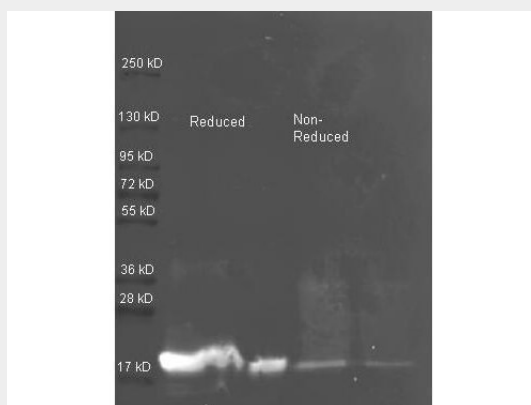
Inhibition of trypsin.

Anti-TRYPSIN INHIBITOR (RABBIT) Antibody - Protocols

Provided below are standard protocols that you may find useful for product applications.

- [Western Blot](#)
- [Blocking Peptides](#)
- [Dot Blot](#)
- [Immunohistochemistry](#)
- [Immunofluorescence](#)
- [Immunoprecipitation](#)
- [Flow Cytometry](#)
- [Cell Culture](#)

Anti-TRYPSIN INHIBITOR (RABBIT) Antibody - Images



Rockland Rabbit anti Soybean Trypsin Inhibitor antibody was used to detect purified Soybean Trypsin Inhibitor. Samples of ~1 and 0.25 ug of purified Soybean Trypsin Inhibitor per lane were run by SDS-PAGE under reducing and non-reducing conditions and reduced samples of protein contained 4% BME and were boiled for 5 minutes. Protein was transferred to nitrocellulose and probed with Rockland Rabbit anti Soybean Trypsin Inhibitor antibody (200-4679 lot 6594 1:5K in MB-0070, ON 4 C). Primary antibody was detected with Rockland Dylight 488 conjugated Streptavidin (S000-41 Lot 21091, 1:5K) and Atto 425 conjugated goat anti rabbit (611-151-122 lot 26423C 1:10K 1.5 hr RT in MB-070) and imaged on the BioRad VersaDoc imaging system.

Anti-TRYPSIN INHIBITOR (RABBIT) Antibody - Background

Soy Bean Trypsin Inhibitor is a serine protease inhibitor, an inhibitor of trypsin, therefore

preventing the further breakdown of proteins.