

Anti-PEPSIN (GOAT) Antibody Biotin Conjugated
Pepsin Antibody Biotin Conjugated
Catalog # ASR4119**Specification****Anti-PEPSIN (GOAT) Antibody Biotin Conjugated - Product Information**

Host	Goat
Conjugate	Biotin
Target Species	Swine
Reactivity	Pig
Clonality	Polyclonal
Application	WB, IHC, E, I, LCI
Application Note	Anti-Pepsin biotin antibody has been tested by ELISA and western. This product is suitable for Immunohistochemistry. Expect band at 41.2 kDa in appropriate cell lysate or extract. Specific conditions for reactivity should be optimized by the end user.
Physical State	Lyophilized
Buffer	0.02 M Potassium Phosphate, 0.15 M Sodium Chloride, pH 7.2
Immunogen	Pepsin [Porcine Stomach]
Reconstitution Volume	100 µL
Reconstitution Buffer	Restore with deionized water (or equivalent)
Stabilizer	10 mg/mL Bovine Serum Albumin (BSA) - Immunoglobulin and Protease free
Preservative	0.01% (w/v) Sodium Azide

Anti-PEPSIN (GOAT) Antibody Biotin Conjugated - Additional Information**Other Names**

396892

Purity

Anti-Pepsin antibody is an IgG fraction antibody purified from monospecific antiserum by a multi-step process which includes delipidation, salt fractionation and ion exchange chromatography followed by extensive dialysis against the buffer stated above. Assay by immunoelectrophoresis resulted in a single precipitin arc against anti-Biotin, anti-Goat Serum as well as purified and partially purified Pepsin [Porcine Stomach]. Cross reactivity against Pepsin from other sources may occur but have not been specifically determined.

Storage Condition

Store vial at 4° C prior to restoration. For extended storage aliquot contents and freeze at -20° C or below. Avoid cycles of freezing and thawing. Centrifuge product if not completely clear after standing at room temperature. This product is stable for several weeks at 4° C as an undiluted liquid. Dilute only prior to immediate use.

Precautions Note

This product is for research use only and is not intended for therapeutic or diagnostic applications.

Anti-PEPSIN (GOAT) Antibody Biotin Conjugated - Protein Information

Name PGA

Function

Shows particularly broad specificity; although bonds involving phenylalanine and leucine are preferred, many others are also cleaved to some extent.

Cellular Location

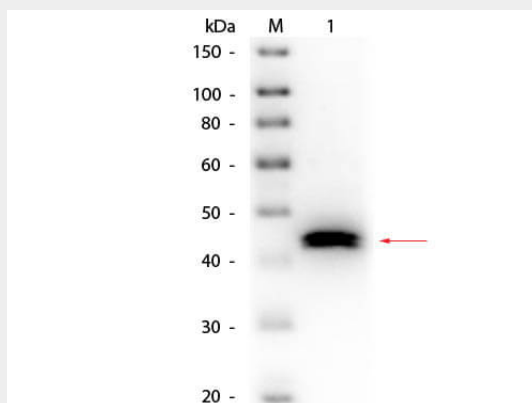
Secreted.

Anti-PEPSIN (GOAT) Antibody Biotin Conjugated - Protocols

Provided below are standard protocols that you may find useful for product applications.

- [Western Blot](#)
- [Blocking Peptides](#)
- [Dot Blot](#)
- [Immunohistochemistry](#)
- [Immunofluorescence](#)
- [Immunoprecipitation](#)
- [Flow Cytometry](#)
- [Cell Culture](#)

Anti-PEPSIN (GOAT) Antibody Biotin Conjugated - Images



Western Blot of Goat anti-Pepsin Antibody Biotin Conjugated. Lane 1: Pepsin. Load: 50 ng per lane. Primary antibody: Goat anti-Pepsin Antibody Biotin Conjugated 1:1,000 overnight at 4°C. Secondary antibody: HRP Streptavidin (p/n S000-03) at 1:40,000 for 30 min at RT. Block: MB-070 for 30 min at RT. Predicted/Observed size: 41 kDa, 41 kDa for Pepsin.

Anti-PEPSIN (GOAT) Antibody Biotin Conjugated - Background

Pepsin antibody detects Pepsin protein. Pepsin is an enzyme whose pepsinogen is released by the chief cells in the stomach and degrades food proteins into peptides. Pepsin belongs to the peptidase A1 family and is one of three principal proteolytic enzymes in the digestive system. Pepsin is most efficient in cleaving peptide bonds between hydrophobic and preferably aromatic

amino acids such as phenylalanine, tryptophan, and tyrosine at positions P1 and P1'. Anti-Pepsin Antibody is ideal for investigators involved in Cell Signaling and Cell Biology research.