

Anti-PROTEIN A (GOAT) Antibody Biotin Conjugated
Protein A Antibody Biotin Conjugated
Catalog # ASR4121**Specification****Anti-PROTEIN A (GOAT) Antibody Biotin Conjugated - Product Information**

Host	Goat
Conjugate	Biotin
Clonality	Polyclonal
Application	WB, IHC, E, I, LCI
Application Note	This product has been assayed against 1.0 ug of Protein A in a standard capture ELISA using Peroxidase Conjugated Streptavidin #S000-03 and ABTS (2,2'-azino-bis-[3-ethyl benthiazoline-6-sulfonic acid]) code # ABTS-100 as a substrate for 30 minutes at room temperature. A working dilution of 1:4,000 to 1:20,000 of the reconstitution concentration is suggested for this product.
Physical State	Lyophilized
Buffer	0.02 M Potassium Phosphate, 0.15 M Sodium Chloride, pH 7.2
Immunogen	Protein A [Staphylococcus aureus]
Reconstitution Volume	1.0 mL
Reconstitution Buffer	Restore with deionized water (or equivalent)
Stabilizer	10 mg/mL Bovine Serum Albumin (BSA) - Immunoglobulin and Protease free
Preservative	0.01% (w/v) Sodium Azide

Anti-PROTEIN A (GOAT) Antibody Biotin Conjugated - Additional Information**Purity**

This product is an IgG fraction antibody purified from monospecific antiserum by a multi-step process which includes delipidation, salt fractionation and ion exchange chromatography followed by extensive dialysis against the buffer stated above. Assay by immunoelectrophoresis resulted in a single precipitin arc against anti-Biotin, anti-Goat Serum as well as purified and partially purified Protein A [Staphylococcus aureus]. Cross reactivity against Protein A from other sources is unknown.

Storage Condition

Store vial at 4° C prior to restoration. For extended storage aliquot contents and freeze at -20° C or below. Avoid cycles of freezing and thawing. Centrifuge product if not completely clear after standing at room temperature. This product is stable for several weeks at 4° C as an undiluted liquid. Dilute only prior to immediate use.

Precautions Note

This product is for research use only and is not intended for therapeutic or diagnostic applications.

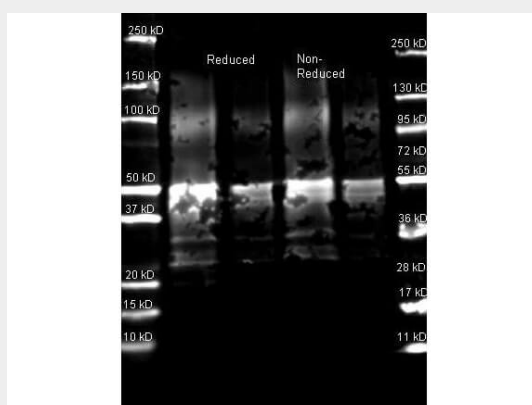
Anti-PROTEIN A (GOAT) Antibody Biotin Conjugated - Protein Information

Anti-PROTEIN A (GOAT) Antibody Biotin Conjugated - Protocols

Provided below are standard protocols that you may find useful for product applications.

- [Western Blot](#)
- [Blocking Peptides](#)
- [Dot Blot](#)
- [Immunohistochemistry](#)
- [Immunofluorescence](#)
- [Immunoprecipitation](#)
- [Flow Cytometry](#)
- [Cell Culture](#)

Anti-PROTEIN A (GOAT) Antibody Biotin Conjugated - Images



Western Blot of Goat anti-Protein A Antibody. Lane 1: Protein A Reduced. Lane 2: Protein A Reduced. Lane 3: Protein A Non-Reduced. Lane 4: Protein A Non-Reduced. Load: Lane 1 and 3 - 1.0 µg per lane, Lane 2 and 4 - 0.25 µg per lane. Primary antibody: Protein A antibody at 1:5,000 for overnight at 4°C. Secondary antibody: DyLight™ 649 goat secondary antibody at 1:10,000 for 90 min at RT. Block: 5% BLOTTO overnight at 4°C. Predicted/Observed size: ~50 kDa for Protein A. Other band(s): Protein A splice variants and isoforms.

Anti-PROTEIN A (GOAT) Antibody Biotin Conjugated - Background

Protein A is 56 kDa surface protein found in the cell wall of *Staphylococcus aureus*. Protein A has a high affinity to Human IgG, Mouse IgG and others and is therefore suitable for purification and detection of immunoglobulins.