

Anti-PROTEIN A (GOAT) Antibody Texas Red™ Conjugated
Protein A Antibody Texas Red™ Conjugated
Catalog # ASR4124**Specification****Anti-PROTEIN A (GOAT) Antibody Texas Red™ Conjugated - Product Information**

Host	Goat
Conjugate	Texas Red®
FP Value	1.5
Clonality	Polyclonal
Application	I, LCI
Application Note	This product is designed for immunofluorescence microscopy, fluorescence based plate assays (FLISA) and fluorescent western blotting. This product is also suitable for multiplex analysis, including multicolor imaging, utilizing various commercial platforms.
Physical State	Lyophilized
Buffer	0.02 M Potassium Phosphate, 0.15 M Sodium Chloride, pH 7.2
Immunogen	Protein A [Staphylococcus aureus]
Reconstitution Volume	2.0 mL
Reconstitution Buffer	Restore with deionized water (or equivalent)
Stabilizer	10 mg/mL Bovine Serum Albumin (BSA) - Immunoglobulin and Protease free
Preservative	0.01% (w/v) Sodium Azide

Anti-PROTEIN A (GOAT) Antibody Texas Red™ Conjugated - Additional Information**Purity**

This product is an IgG fraction antibody purified from monospecific antiserum by a multi-step process which includes delipidation, salt fractionation and ion exchange chromatography followed by extensive dialysis against the buffer stated above. Assay by immunoelectrophoresis resulted in a single precipitin arc against purified and partially purified Protein A [Staphylococcus aureus], anti-Goat IgG and anti-Goat Serum. Cross reactivity against Protein A from other sources is unknown.

Storage Condition

Store vial at 4° C prior to restoration. For extended storage aliquot contents and freeze at -20° C or below. Avoid cycles of freezing and thawing. Centrifuge product if not completely clear after standing at room temperature. This product is stable for several weeks at 4° C as an undiluted liquid. Dilute only prior to immediate use.

Precautions Note

This product is for research use only and is not intended for therapeutic or diagnostic applications.

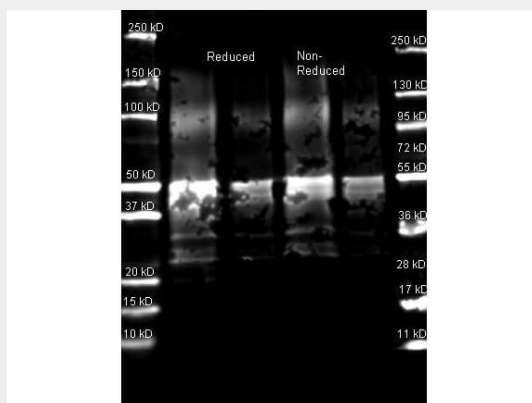
Anti-PROTEIN A (GOAT) Antibody Texas Red™ Conjugated - Protein Information

Anti-PROTEIN A (GOAT) Antibody Texas Red™ Conjugated - Protocols

Provided below are standard protocols that you may find useful for product applications.

- [Western Blot](#)
- [Blocking Peptides](#)
- [Dot Blot](#)
- [Immunohistochemistry](#)
- [Immunofluorescence](#)
- [Immunoprecipitation](#)
- [Flow Cytometry](#)
- [Cell Culture](#)

Anti-PROTEIN A (GOAT) Antibody Texas Red™ Conjugated - Images



Western Blot of Goat anti-Protein A Antibody. Lane 1: Protein A Reduced. Lane 2: Protein A Reduced. Lane 3: Protein A Non-Reduced. Lane 4: Protein A Non-Reduced. Load: Lane 1 and 3 - 1.0 µg per lane, Lane 2 and 4 - 0.25 µg per lane. Primary antibody: Protein A antibody at 1:5,000 for overnight at 4°C. Secondary antibody: DyLight™ 649 goat secondary antibody at 1:10,000 for 90 min at RT. Block: 5% BLOTTO overnight at 4°C. Predicted/Observed size: ~50 kDa for Protein A. Other band(s): Protein A splice variants and isoforms.

Anti-PROTEIN A (GOAT) Antibody Texas Red™ Conjugated - Background

Protein A is 56 kDa surface protein found in the cell wall of *Staphylococcus aureus*. Protein A has a high affinity to Human IgG, Mouse IgG and others and is therefore suitable for purification and detection of immunoglobulins.