

Anti-BIN3 (MOUSE) Monoclonal Antibody
BIN3 Antibody
Catalog # ASR4213**Specification**

Anti-BIN3 (MOUSE) Monoclonal Antibody - Product Information

Host	Mouse
Conjugate	Unconjugated
Target Species	Human
Reactivity	Mouse
Clonality	Monoclonal
Application	WB, E, IP, I, LCI
Application Note	Anti-BIN3 antibody has been tested for use in ELISA, Western Blot, and IP. Specific conditions for reactivity should be optimized by the end user.
Physical State	Liquid (sterile filtered)
Buffer	0.02 M Potassium Phosphate, 0.15 M Sodium Chloride, pH 7.2
Immunogen	Anti-BIN3 (MOUSE) Monoclonal Antibody was produced in mouse by repeated immunizations with a full length human BIN3 recombinant protein followed by hybridoma development.
Preservative	0.01% (w/v) Sodium Azide

Anti-BIN3 (MOUSE) Monoclonal Antibody - Additional Information**Gene ID** 55909**Other Names**
55909**Purity**

Anti-BIN3 was purified from clarified mouse ascetic fluid by Protein A chromatography followed by extensive dialysis against the buffer stated above. BIN3 antibody is specific for human BIN3 protein. A BLAST analysis was used to suggest cross-reactivity with BIN3 from human and mouse sources based on 100% homology with the immunizing sequence. Cross-reactivity with BIN3 from other sources has not been determined.

Storage Condition

Store vial at -20° C prior to opening. Aliquot contents and freeze at -20° C or below for extended storage. Avoid cycles of freezing and thawing. Centrifuge product if not completely clear after standing at room temperature. This product is stable for several weeks at 4° C as an undiluted liquid. Dilute only prior to immediate use.

Precautions Note

This product is for research use only and is not intended for therapeutic or diagnostic applications.

Anti-BIN3 (MOUSE) Monoclonal Antibody - Protein Information

Name BIN3

Function

Involved in cytokinesis and septation where it has a role in the localization of F-actin.

Cellular Location

Cytoplasm, cytoskeleton.

Tissue Location

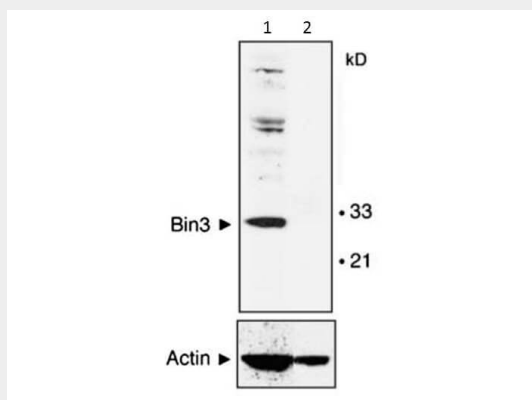
Ubiquitously expressed except in brain.

Anti-BIN3 (MOUSE) Monoclonal Antibody - Protocols

Provided below are standard protocols that you may find useful for product applications.

- [Western Blot](#)
- [Blocking Peptides](#)
- [Dot Blot](#)
- [Immunohistochemistry](#)
- [Immunofluorescence](#)
- [Immunoprecipitation](#)
- [Flow Cytometry](#)
- [Cell Culture](#)

Anti-BIN3 (MOUSE) Monoclonal Antibody - Images



Western Blot of Mouse Anti-BIN3 antibody. Lane 1: MEF cells wild type. Lane 2: MEF cells null mice. Load: 35 µg per lane. Primary antibody: BIN3 antibody overnight at 4°C. Secondary antibody: IRDye800™ mouse secondary antibody for 45 min at RT. Block: 5% BLOTTO overnight at 4°C. Predicted/Observed size: 29.7 kDa, 30 kDa for BIN-3. Other band(s): non-specific.

Anti-BIN3 (MOUSE) Monoclonal Antibody - Background

BIN-3 encodes an evolutionarily conserved and ubiquitously expressed member of the BAR superfamily of curved membrane and GTPase-binding proteins implicated in signal transduction and vesicular trafficking. In humans, Bin3 maps to chromosome 8p21.3, a region widely implicated in cancer suppression that is often deleted in non-Hodgkin's lymphomas and various epithelial tumors. Study in mouse suggests that homozygous inactivation of Bin3 causes cataracts and an increased susceptibility to lymphomas during aging.