

**Anti-NF-Y (A subunit) (RABBIT) Antibody**  
**NF-Y Antibody**  
**Catalog # ASR4364****Specification**

---

**Anti-NF-Y (A subunit) (RABBIT) Antibody - Product Information**

Host	Rabbit
Conjugate	Unconjugated
Target Species	Human
Reactivity	Human, Monkey
Clonality	Polyclonal
Application	WB, E, I, LCI
Application Note	Anti-NF-Y antibody is tested for western blotting and suitable for ELISA. Researchers should determine optimal titers for applications that are not stated below.
Physical State	Liquid (sterile filtered)
Buffer	0.02 M Potassium Phosphate, 0.15 M Sodium Chloride, pH 7.2
Immunogen	Anti-NF-Y (A) antibody was produced by repeated immunizations with a synthetic NF-Y (A subunit) peptide corresponding to a region near the N-terminus of the human protein conjugated to Keyhole Limpet Hemocyanin (KLH).
Preservative	0.01% (w/v) Sodium Azide

**Anti-NF-Y (A subunit) (RABBIT) Antibody - Additional Information****Gene ID** 4800**Other Names**  
4800**Purity**

Anti-NF-Y (a) antibody was prepared from monospecific antiserum by a multi-step procedure that includes delipidation, salt fractionation and ion exchange chromatography. A single precipitin arc was observed against anti-Rabbit Serum when assayed by immunoelectrophoresis.

**Storage Condition**

Store vial at -20° C prior to opening. Aliquot contents and freeze at -20° C or below for extended storage. Avoid cycles of freezing and thawing. Centrifuge product if not completely clear after standing at room temperature. This product is stable for several weeks at 4° C as an undiluted liquid. Dilute only prior to immediate use.

**Precautions Note**

This product is for research use only and is not intended for therapeutic or diagnostic applications.

## Anti-NF-Y (A subunit) (RABBIT) Antibody - Protein Information

**Name** NFYA

### Function

Component of the sequence-specific heterotrimeric transcription factor (NF-Y) which specifically recognizes a 5'-CCAAT-3' box motif found in the promoters of its target genes. NF-Y can function as both an activator and a repressor, depending on its interacting cofactors. NF-YA positively regulates the transcription of the core clock component BMAL1.

### Cellular Location

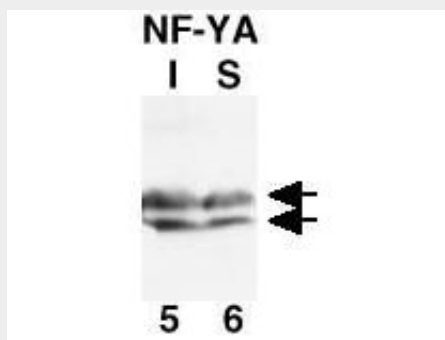
Nucleus.

## Anti-NF-Y (A subunit) (RABBIT) Antibody - Protocols

Provided below are standard protocols that you may find useful for product applications.

- [Western Blot](#)
- [Blocking Peptides](#)
- [Dot Blot](#)
- [Immunohistochemistry](#)
- [Immunofluorescence](#)
- [Immunoprecipitation](#)
- [Flow Cytometry](#)
- [Cell Culture](#)

## Anti-NF-Y (A subunit) (RABBIT) Antibody - Images



Western Blot of Rabbit Anti-NF-Y(A subunit) Antibody. Lane 1: CHO-7 cells in the absence (I) of cholesterol. Lane 2: CHO-7 cells in the presence (S) of cholesterol. Load: Equivalent aliquots of chromatin from each sample containing ~50 µg of total protein per lane. Primary antibody: anti-NF-YA antibody at 1:1000 for overnight at 4°C. Secondary antibody: HRP conjugated Goat-anti-Rabbit IgG [H&L] secondary antibody (p/n 611-103-122) at 1:10,000 for 45 min at RT. Block: 5% BLOTTO overnight at 4°C. Predicted/Observed size: doublet of ~ 42 kDa for NF-YA.

## Anti-NF-Y (A subunit) (RABBIT) Antibody - Background

Anti-NF-Y antibody detects NF-Y (a subunit) protein. NF-Y is a highly conserved transcription factor that stimulates the transcription of various genes by recognizing and binding to a CCAAT motif in promoters, for example in type 1 collagen, albumin and beta-actin genes. NF-subunit A associates with a tight dimer composed of the NF-YB and NF-YC subunits, resulting in a trimer that binds to DNA with high specificity and affinity. Anti-NF-YA Antibody is ideal for investigators involved in Cell Signaling, Immunology, Cancer, and Signal Transduction research.