

Anti-ALKALINE PHOSPHATASE (Human Intestine) (RABBIT) Antibody
ALKALINE PHOSPHATASE Antibody
Catalog # ASR4379**Specification****Anti-ALKALINE PHOSPHATASE (Human Intestine) (RABBIT) Antibody - Product Information**

Host	Rabbit
Conjugate	Unconjugated
Target Species	Human
Reactivity	Human
Clonality	Polyclonal
Application	WB, E, I, LCI
Application Note	ALKALINE PHOSPHATASE Antibody has been assayed against 1.0 µg of Alkaline Phosphatase [Human Intestine] in a standard ELISA using Peroxidase conjugated Affinity Purified anti-Rabbit IgG [H&L] (Goat) code #611-1302 and (ABTS (2,2'-azino-bis-[3-ethylbenthiazoline-6-sulfonic acid]) code # ABTS-100 as a substrate for 30 minutes at room temperature. A working dilution of 1:20,000 to 1:100,000 of the reconstitution concentration is suggested for this product.
Physical State	Lyophilized
Buffer	0.02 M Potassium Phosphate, 0.15 M Sodium Chloride, pH 7.2
Immunogen	Alkaline Phosphatase [Human Intestine]
Reconstitution Volume	100 µL
Reconstitution Buffer	Restore with deionized water (or equivalent)
Preservative	0.01% (w/v) Sodium Azide

Anti-ALKALINE PHOSPHATASE (Human Intestine) (RABBIT) Antibody - Additional Information**Gene ID 248****Other Names**
248**Purity**

Anti-ALKALINE PHOSPHATASE is an IgG fraction antibody purified from monospecific antiserum by a multi-step process which includes delipidation, salt fractionation and ion exchange chromatography followed by extensive dialysis against the buffer stated above. Assay by immunoelectrophoresis resulted in a single precipitin arc against anti-Rabbit Serum as well as purified and partially purified Alkaline Phosphatase [Human Intestine]. Cross reactivity against Alkaline Phosphatase from other sources is unknown.

Storage Condition

Store vial at 4° C prior to restoration. For extended storage aliquot contents and freeze at -20° C or below. Avoid cycles of freezing and thawing. Centrifuge product if not completely clear after standing at room temperature. This product is stable for several weeks at 4° C as an undiluted liquid. Dilute only prior to immediate use.

Precautions Note

This product is for research use only and is not intended for therapeutic or diagnostic applications.

Anti-ALKALINE PHOSPHATASE (Human Intestine) (RABBIT) Antibody - Protein Information

Name ALPI

Function

Alkaline phosphatase that can hydrolyze various phosphate compounds.

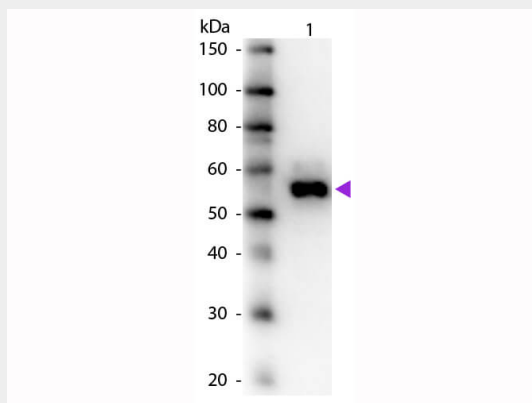
Cellular Location

Cell membrane {ECO:0000250|UniProtKB:P15693}; Lipid-anchor, GPI-anchor {ECO:0000250|UniProtKB:P15693}

Anti-ALKALINE PHOSPHATASE (Human Intestine) (RABBIT) Antibody - Protocols

Provided below are standard protocols that you may find useful for product applications.

- [Western Blot](#)
- [Blocking Peptides](#)
- [Dot Blot](#)
- [Immunohistochemistry](#)
- [Immunofluorescence](#)
- [Immunoprecipitation](#)
- [Flow Cytometry](#)
- [Cell Culture](#)

Anti-ALKALINE PHOSPHATASE (Human Intestine) (RABBIT) Antibody - Images

Western Blot of Rabbit Anti-Alkaline Phosphatase Primary Antibody. Molecular Weight Marker. Lane 1: Alkaline Phosphatase. Load: 50 ng per lane. Primary antibody: Alkaline Phosphatase primary antibody at 1:1,000 overnight at 4°C. Secondary antibody: Peroxidase rabbit secondary

antibody (p/n 611-1302) at 1:40,000 for 30 min at RT. Block: (p/n MB-070) for 30 min at RT. Predicted/Observed size: 58 kDa for Alkaline Phosphatase.

Anti-ALKALINE PHOSPHATASE (Human Intestine) (RABBIT) Antibody - Background

In most mammals there are four different isozymes: placental, placental-like, intestinal and tissue non-specific (liver/bone/kidney). Alkaline Phosphatase catalytic activity is phosphate monoester + H₂O = an alcohol + phosphate.