

**Anti-Jagged-1 (RABBIT) Antibody**  
**Jagged 1 Antibody**  
**Catalog # ASR4401****Specification**

---

**Anti-Jagged-1 (RABBIT) Antibody - Product Information**

Host	Rabbit
Conjugate	Unconjugated
Target Species	Human
Reactivity	Human, Mouse
Clonality	Polyclonal
Application	WB, IHC, E, I, LCI
Application Note	Anti-Jagged-1 antibody has been tested for use in ELISA, immunohistochemistry, immunofluorescence microscopy and western blot. Specific conditions for reactivity should be optimized by the end user. Expect a band approximately 150 kDa in size corresponding to Jagged-1 in mouse liver, human liver and human lung whole cell lysates.
Physical State	Liquid (sterile filtered)
Buffer	0.02 M Potassium Phosphate, 0.15 M Sodium Chloride, pH 7.2
Immunogen	This protein A purified Jagged 1 antibody was prepared from whole rabbit serum produced by repeated immunizations with a synthetic peptide corresponding to amino acids near the N-terminus of human Jagged-1 protein.
Preservative	0.01% (w/v) Sodium Azide

**Anti-Jagged-1 (RABBIT) Antibody - Additional Information****Gene ID** 182**Other Names**  
182**Purity**

This protein A purified antibody is directed against human Jagged-1 protein. The product was purified from mono-specific antiserum by affinity chromatography. A BLAST analysis was used to suggest cross reactivity with Jagged-1 protein from human, chimpanzee, rat and mouse based on 100% homology with the immunizing sequence. Partial reactivity is expected against dog (81%) and *Xenopus laevis* (85%) based on partial sequence homologies as indicated. Reactivity against homologues from other sources is not known.

**Storage Condition**

Store vial at -20° C prior to opening. Aliquot contents and freeze at -20° C or below for extended storage. Avoid cycles of freezing and thawing. Centrifuge product if not completely clear after

standing at room temperature. This product is stable for several weeks at 4° C as an undiluted liquid. Dilute only prior to immediate use.

**Precautions Note**

This product is for research use only and is not intended for therapeutic or diagnostic applications.

**Anti-Jagged-1 (RABBIT) Antibody - Protein Information**

**Name** JAG1

**Synonyms** JAGL1

**Function**

Ligand for multiple Notch receptors and involved in the mediation of Notch signaling (PubMed:<a href="http://www.uniprot.org/citations/18660822" target="\_blank">18660822</a>, PubMed:<a href="http://www.uniprot.org/citations/20437614" target="\_blank">20437614</a>). May be involved in cell-fate decisions during hematopoiesis (PubMed:<a href="http://www.uniprot.org/citations/9462510" target="\_blank">9462510</a>). Seems to be involved in early and late stages of mammalian cardiovascular development. Inhibits myoblast differentiation (By similarity). Enhances fibroblast growth factor-induced angiogenesis (in vitro).

**Cellular Location**

Membrane; Single-pass type I membrane protein. Cell membrane

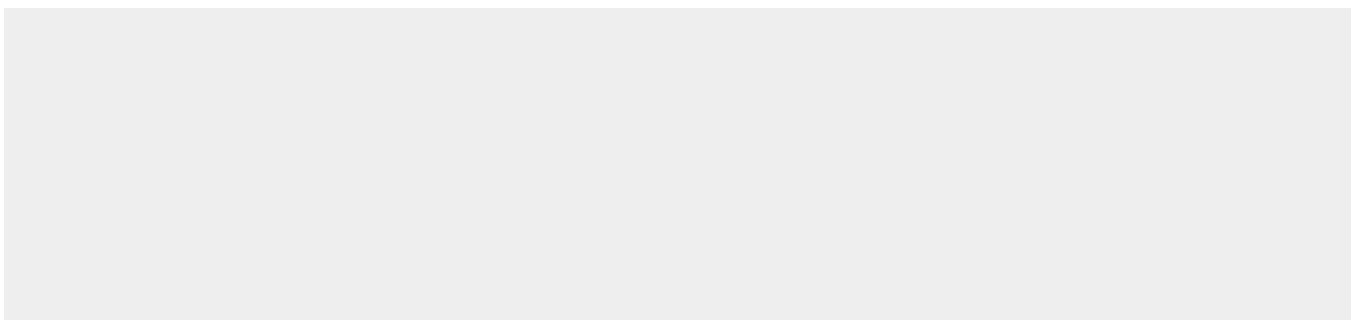
**Tissue Location**

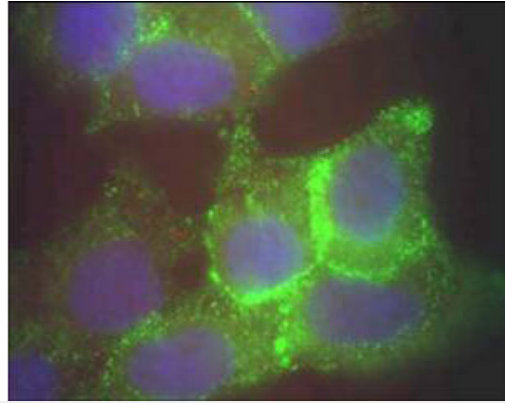
Widely expressed in adult and fetal tissues. In cervix epithelium expressed in undifferentiated subcolumnar reserve cells and squamous metaplasia. Expression is up-regulated in cervical squamous cell carcinoma. Expressed in bone marrow cell line HS-27a which supports the long-term maintenance of immature progenitor cells

**Anti-Jagged-1 (RABBIT) Antibody - Protocols**

Provided below are standard protocols that you may find useful for product applications.

- [Western Blot](#)
- [Blocking Peptides](#)
- [Dot Blot](#)
- [Immunohistochemistry](#)
- [Immunofluorescence](#)
- [Immunoprecipitation](#)
- [Flow Cytometry](#)
- [Cell Culture](#)

**Anti-Jagged-1 (RABBIT) Antibody - Images**



Immunofluorescence microscopy using Rockland's Protein A purified anti-Jagged-1 antibody of human corneal epithelial cells. Primary antibody was used at a 1:500 dilution. The Jagged1 (green staining) is localized to the cytoplasm and is consistent with reports in the literature. The nucleus is stained with Bis benzamine (blue). Personal Communication. Aihua Ma, University of Cardiff.

#### **Anti-Jagged-1 (RABBIT) Antibody - Background**

Anti-Jagged 1 Antibody recognizes the Jagged 1 protein encoded by the JAG1 gene, that is the human homolog of the *Drosophila* jagged protein. Human Jagged 1 is the ligand for multiple Notch receptors and mediation of Notch signaling. Jagged 1 signaling through Notch 1 has also been shown to play a role in hematopoiesis. Mutations that alter the Jagged 1 protein cause Alagille syndrome, deafness, congenital heart defects, and posterior embryotoxon. Anti-Jagged-1 Antibody is useful for researchers interested in Notch activation, Growth Factor activities, and Cardiovascular health.