

**Anti-E.Coli Combined Host Cell Protein (HCP) Antibody**  
**E.coli Combined HCP Antibody**  
**Catalog # ASR4481****Specification**

---

**Anti-E.Coli Combined Host Cell Protein (HCP) Antibody - Product Information**

Host	Rabbit
Conjugate	Unconjugated
Target Species	Escherichia coli
Reactivity	E. coli
Clonality	Polyclonal
Application	WB, E, I, LCI
Application Note	Anti-Host Cell Proteins Antibody detects over 300 E.coli proteins and has been tested by 2D-Page, western blotting, and ELISA.
Physical State	Liquid (sterile filtered)
Buffer	0.02 M Potassium Phosphate, 0.15 M Sodium Chloride, pH 7.2
Immunogen	Anti-Host Cell Proteins Antibody was prepared by repeated immunizations with a full range of high molecular weight (HMW) and low molecular weight (LMW) proteins from E.Coli (BL21).
Preservative	0.01% (w/v) Sodium Azide

**Anti-E.Coli Combined Host Cell Protein (HCP) Antibody - Additional Information****Purity**

Host Cell Protein A purified antibody is directed against high molecular weight and low molecular weight E.coli Host Cell Proteins. The product was purified from monospecific antiserum by Protein A affinity chromatography. Reactivity is directed against E.coli Host Cell Proteins. Cross-reactivity with other species is likely but has not been determined. Reactivity against homologues from other sources is not known.

**Storage Condition**

Store vial at -20° C prior to opening. Aliquot contents and freeze at -20° C or below for extended storage. Avoid cycles of freezing and thawing. Centrifuge product if not completely clear after standing at room temperature. This product is stable for several weeks at 4° C as an undiluted liquid. Dilute only prior to immediate use.

**Precautions Note**

This product is for research use only and is not intended for therapeutic or diagnostic applications.

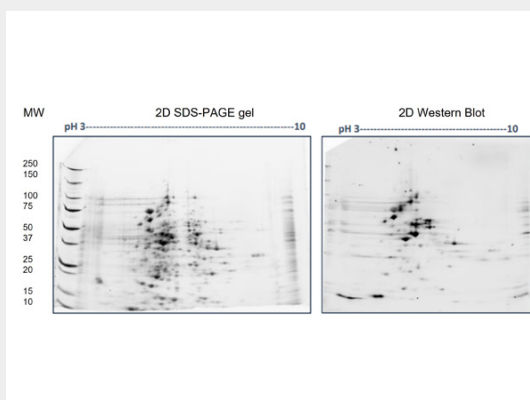
**Anti-E.Coli Combined Host Cell Protein (HCP) Antibody - Protein Information**

## Anti-E.Coli Combined Host Cell Protein (HCP) Antibody - Protocols

Provided below are standard protocols that you may find useful for product applications.

- [Western Blot](#)
- [Blocking Peptides](#)
- [Dot Blot](#)
- [Immunohistochemistry](#)
- [Immunofluorescence](#)
- [Immunoprecipitation](#)
- [Flow Cytometry](#)
- [Cell Culture](#)

## Anti-E.Coli Combined Host Cell Protein (HCP) Antibody - Images



2D SDS-PAGE: Load/Strip: 100 µg E. coli HCP total lysate/strip. 2D Oriole stained gels. Western Blot of Anti-E.coli Total Host Cell Protein antibody: Primary antibody: Rabbit Anti-E.coli Total Host Cell Protein at 1:500 overnight at 2-8°C. Secondary antibody: Goat anti-Rabbit IgG Cy5 Conjugated (p/n 611-110-122) at RT for 2hrs. Block: Blocking Buffer (p/n MB-070) for 1 hour at RT.

## Anti-E.Coli Combined Host Cell Protein (HCP) Antibody - Background

Anti-Host Cell Proteins Antibody recognizes high and low molecular weight protein fractions from E.coli. This antibody has been validated by 2D electrophoresis western blot to assure highest possible coverage of E.coli HCP. Host Cell Proteins are process-related impurities derived from a host cell expression system that may be present in trace amounts in a final drug substance. HCP Antibodies are used to detect impurities in biologically-based therapeutics. Detecting impurities often unseen by 1-D electrophoresis, a 2D electrophoresis western blot analysis delivers more complete insight into the immunocoverage of protein components of the host cell lysate.