

Anti-BETA GALACTOSIDASE (E.coli) (CHICKEN) Antibody
Beta Galactosidase Antibody
Catalog # ASR4843**Specification****Anti-BETA GALACTOSIDASE (E.coli) (CHICKEN) Antibody - Product Information**

Host	Chicken
Conjugate	Unconjugated
Clonality	Polyclonal
Application	WB, E, I, LCI
Application Note	Anti-Beta-Gal (CHICKEN) Antibody has been tested for use in ELISA and immunoblotting. Although not tested, this antibody may also be useful for neutralization assays, immunohistochemistry, flow Cytometry, immunoprecipitation, immunodiffusion, conjugation and most immunological methods requiring high titer and specificity.
Physical State	Liquid (sterile filtered)
Buffer	0.02 M Potassium Phosphate, 0.15 M Sodium Chloride, pH 7.2
Immunogen	This IgY fraction antibody was prepared from eggs of chickens laid after repeated immunizations with full length native Beta Galactosidase isolated from E.coli
Preservative	0.01% (w/v) Sodium Azide

Anti-BETA GALACTOSIDASE (E.coli) (CHICKEN) Antibody - Additional Information**Gene ID** 945006**Purity**

This Anti-Beta Galactosidase Antibody is an IgY fraction antibody purified from monospecific chicken egg yolks by a multi-step process which includes selective precipitation and salt fractionation followed by extensive dialysis against the buffer stated above. Assay by immunoelectrophoresis resulted in a single precipitin arc against purified and partially purified Beta Galactosidase [E.coli] and anti-Chicken Serum. Cross reactivity against Beta Galactosidase from other tissues and species may occur but have not been specifically determined. Very low background staining has been reported in various assays.

Storage Condition

Store vial at -20° C prior to opening. Aliquot contents and freeze at -20° C or below for extended storage. Avoid cycles of freezing and thawing. Centrifuge product if not completely clear after standing at room temperature. This product is stable for several weeks at 4° C as an undiluted liquid. Dilute only prior to immediate use.

Precautions Note

This product is for research use only and is not intended for therapeutic or diagnostic applications.

Anti-BETA GALACTOSIDASE (E.coli) (CHICKEN) Antibody - Protein Information

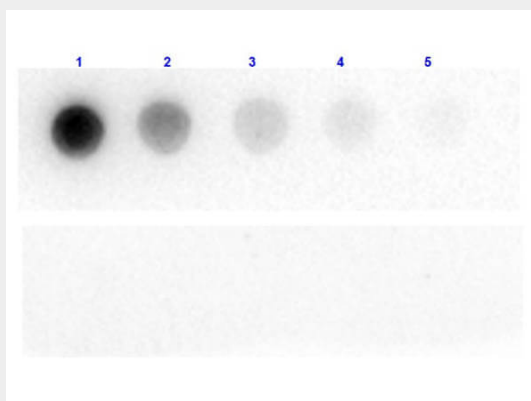
Name lacZ

Anti-BETA GALACTOSIDASE (E.coli) (CHICKEN) Antibody - Protocols

Provided below are standard protocols that you may find useful for product applications.

- [Western Blot](#)
- [Blocking Peptides](#)
- [Dot Blot](#)
- [Immunohistochemistry](#)
- [Immunofluorescence](#)
- [Immunoprecipitation](#)
- [Flow Cytometry](#)
- [Cell Culture](#)

Anti-BETA GALACTOSIDASE (E.coli) (CHICKEN) Antibody - Images



Dot Blot of Chicken Anti-Beta Galactosidase Antibody. Dilutions of Beta Gal: (1) 100ng, (2) 33.3ng, (3) 11.1ng, (4) 3.7ng, and (5) 1.23ng. Top Blot incubated with Primary Antibody: 1 µg/mL of Anti-Beta Galactosidase for 1 hour at room temp. Bottom Blot incubated with Secondary Only: Goat anti-Chicken Peroxidase conjugated (p/n 603-103-126) 1:40,000 for 30 min at room temp. Blocking Buffer: BlockOut Universal Blocker (p/n MB-073). Exposure 1 sec.

Anti-BETA GALACTOSIDASE (E.coli) (CHICKEN) Antibody - Background

Anti Beta Galactosidase Antibody recognizes the enzyme beta galactosidase, or β -galactosidase, that is a component of assays used frequently in genetics, molecular biology (see X-gal) for a blue white screen, and other life sciences. IPTG induces production of β -galactosidase by binding and inhibiting the lac repressor. Since it is highly expressed and accumulated in lysosomes in senescent cells, it is used as a senescence biomarker both in vivo and in vitro in qualitative and quantitative assays, despite its limitations. Anti-beta Galactosidase Antibody is ideal for investigators involved in enzyme research.