

**Anti-Mouse IL-6 (RABBIT) Antibody**  
**IL-6 Antibody**  
**Catalog # ASR5001****Specification****Anti-Mouse IL-6 (RABBIT) Antibody - Product Information**

Host	Rabbit
Conjugate	Unconjugated
Target Species	Mouse
Reactivity	Mouse
Clonality	Polyclonal
Application	WB, IHC, E, I, LCI
Application Note	This purified antibody has been tested for use in Immunohistochemistry, western blotting, and flow cytometry in human and mouse cell lines. This product is suitable for ELISA. Specific conditions for reactivity should be optimized by the end user. Expect a band approximately 21.7 kDa in size corresponding to the mature 187 amino acid mouse IL-6 protein by western blotting in appropriate cell lysate or extract.
Physical State	Lyophilized
Buffer	0.02 M Potassium Phosphate, 0.15 M Sodium Chloride, pH 7.2
Immunogen	Anti-IL-6 is an IgG fraction antibody prepared from rabbit antiserum after repeated immunizations with recombinant mouse IL-6 protein produced in E.coli.
Reconstitution Volume	100 µL
Reconstitution Buffer	Restore with deionized water (or equivalent)

**Anti-Mouse IL-6 (RABBIT) Antibody - Additional Information****Gene ID** 16193**Other Names**  
16193**Purity**

This product is an IgG fraction antibody purified from monospecific antiserum by a multi-step process which includes delipidation, salt fractionation and ion exchange chromatography followed by extensive dialysis against the buffer stated above. This antibody is specific for mouse IL-6 protein. A BLAST analysis was used to suggest cross-reactivity with IL-6 from mouse sources based on 100% homology with the immunizing sequence. Cross-reactivity with IL-6 from other sources has not been determined.

**Storage Condition**

Store anti-IL-6 at 4° C prior to restoration. For extended storage aliquot contents and freeze at -20° C or below. Avoid cycles of freezing and thawing. Centrifuge product if not completely clear after standing at room temperature. This product is stable for several weeks at 4° C as an undiluted liquid. Dilute only prior to immediate use.

**Precautions Note**

This product is for research use only and is not intended for therapeutic or diagnostic applications.

**Anti-Mouse IL-6 (RABBIT) Antibody - Protein Information**

**Name** IL6 {ECO:0000312|MGI:MGI:96559}

**Synonyms** IL-6

**Function**

Cytokine with a wide variety of biological functions in immunity, tissue regeneration, and metabolism (Probable). Binds to IL6R, then the complex associates to the signaling subunit IL6ST/gp130 to trigger the intracellular IL6-signaling pathway (PubMed:<a href="http://www.uniprot.org/citations/8910279" target="\_blank">8910279</a>). The interaction with the membrane-bound IL6R and IL6ST stimulates 'classic signaling', whereas the binding of IL6 and soluble IL6R to IL6ST stimulates 'trans-signaling'. Alternatively, 'cluster signaling' occurs when membrane-bound IL6:IL6R complexes on transmitter cells activate IL6ST receptors on neighboring receiver cells (PubMed:<a href="http://www.uniprot.org/citations/27893700" target="\_blank">27893700</a>).

**Cellular Location**

Secreted.

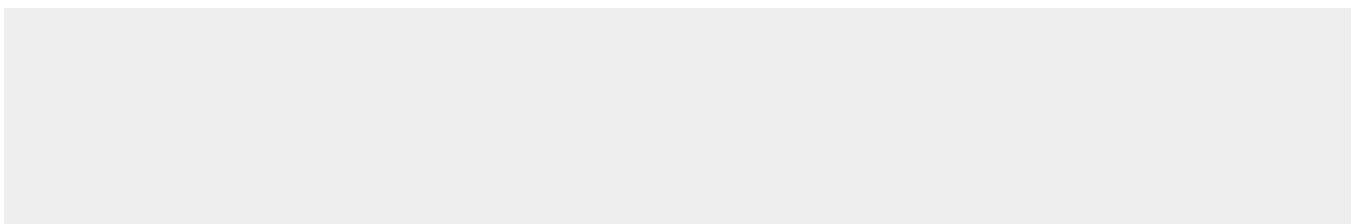
**Tissue Location**

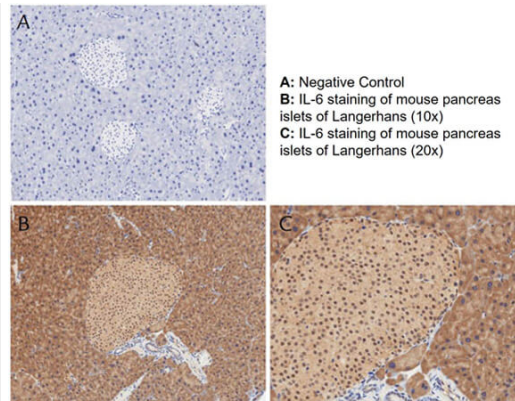
Expressed by dendritic cells and macrophages (PubMed:23045607, PubMed:27893700). Expressed by activated follicular B cells (PubMed:23045607). Abundantly expressed in the central nervous system (CNS), particularly the hypothalamic region (PubMed:28402851)

**Anti-Mouse IL-6 (RABBIT) Antibody - Protocols**

Provided below are standard protocols that you may find useful for product applications.

- [Western Blot](#)
- [Blocking Peptides](#)
- [Dot Blot](#)
- [Immunohistochemistry](#)
- [Immunofluorescence](#)
- [Immunoprecipitation](#)
- [Flow Cytometry](#)
- [Cell Culture](#)

**Anti-Mouse IL-6 (RABBIT) Antibody - Images**



Immunohistochemistry with anti-IL-6 antibody showing positivity of islets of Langerhans (brown staining) and cytoplasmic staining in mouse pancreas at 10x and 20x (B & C). Staining was performed on Leica Bond system using the standard protocol. Formalin fixed/paraffin embedded tissue sections were subjected to antigen retrieval with E1 (Leica Microsystems) retrieval solution for 20 min and then incubated with rabbit anti-mouse IL-6 antibody at 1:50 dilution for 60 minutes. Biotinylated Anti-rabbit secondary antibody was used at 1:200 dilution to detect primary antibody. The reaction was developed using streptavidin-HRP conjugated compact polymer system and visualized with chromogen substrate, 3'3-diamino-benzidine substrate (DAB). The sections were then counterstained with hematoxylin to detect cell nuclei.

#### **Anti-Mouse IL-6 (RABBIT) Antibody - Background**

Interleukin (IL)-6, also known as BCDG, BCGF and BSF-2, is an important proinflammatory and immunoregulatory cytokine expressed by various cells. Interleukin-6 has been shown to inhibit the growth of early stage and to promote the proliferation of advanced stage melanoma cells in vitro. Anti-IL-6 antibody is ideal for investigators involved in Cancer, Neuroscience and Immunology research.