

**Anti-hCG Alpha (GOAT) Antibody**  
**hCG Alpha chain Antibody**  
**Catalog # ASR5098****Specification**

---

**Anti-hCG Alpha (GOAT) Antibody - Product Information**

Host	Goat
Conjugate	Unconjugated
Target Species	Human
Reactivity	Human
Clonality	Polyclonal
Application	WB, E, I, LCI
Application Note	Anti-Human Chorionic Gonadotropin (hCG) Alpha Antibody has been tested in ELISA and WB. Expect a band at ~14.9kDa for the alpha chain in western blot using appropriate tissues and lysates. ELISA reactivity expected against alpha hCG with an expected titer of ~1:100,000 and full hCG at ~1:50,000 dilution.
Physical State	Liquid (sterile filtered)
Buffer	0.02 M Potassium Phosphate, 0.15 M Sodium Chloride, pH 7.2
Immunogen	Anti-Human Chorionic Gonadotropin Alpha Antibody was prepared from whole goat serum produced by repeated immunizations with Hu Chorionic Gonadotropin Alpha Subunit protein.
Preservative	0.01% (w/v) Sodium Azide

**Anti-hCG Alpha (GOAT) Antibody - Additional Information****Gene ID** 1081**Other Names**  
1081**Purity**

This affinity purified antibody is directed against hCG alpha. This product was affinity purified from monospecific antiserum by immunoaffinity purification. This product reacts with Full Human Chorionic Gonadotropin (hCG) and Human Chorionic Gonadotropin Alpha chain ( $\alpha$ -hCG).

**Storage Condition**

Store vial at -20° C prior to opening. Aliquot contents and freeze at -20° C or below for extended storage. Avoid cycles of freezing and thawing. Centrifuge product if not completely clear after standing at room temperature. This product is stable for several weeks at 4° C as an undiluted liquid. Dilute only prior to immediate use.

**Precautions Note**

This product is for research use only and is not intended for therapeutic or diagnostic applications.

## Anti-hCG Alpha (GOAT) Antibody - Protein Information

**Name** CGA

### Function

Shared alpha chain of the active heterodimeric glycoprotein hormones thyrotropin/thyroid stimulating hormone/TSH, lutropin/luteinizing hormone/LH, follitropin/follicle stimulating hormone/FSH and choriogonadotropin/CG. These hormones bind specific receptors on target cells that in turn activate downstream signaling pathways.

### Cellular Location

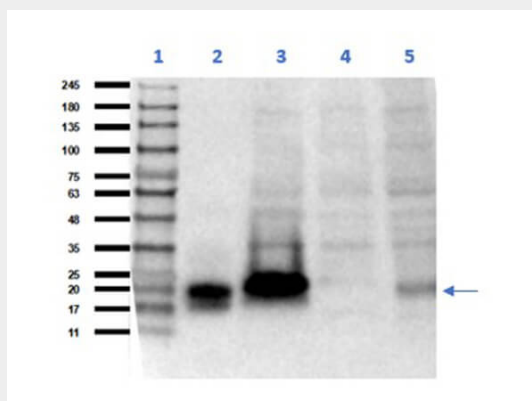
Secreted

## Anti-hCG Alpha (GOAT) Antibody - Protocols

Provided below are standard protocols that you may find useful for product applications.

- [Western Blot](#)
- [Blocking Peptides](#)
- [Dot Blot](#)
- [Immunohistochemistry](#)
- [Immunofluorescence](#)
- [Immunoprecipitation](#)
- [Flow Cytometry](#)
- [Cell Culture](#)

## Anti-hCG Alpha (GOAT) Antibody - Images



Western Blot of Goat Anti-Human Chorionic Gonadotropin Alpha Antibody. Lane 1: Opal Prestained Molecular Weight Marker (p/n MB-210-0500). Lane 2: alpha hCG (0.05 µg) [+]. Lane 3: alpha hCG/U-20S WCL (p/n W09-001-374) (0.05 µg/20 µg) [+]. Lane 4: U-20S WCL (p/n W09-001-374) (20 µg) [-]. Lane 5: HeLa WCL (p/n W09-000-364) (35 µg) [+]. Primary Antibody: Anti-α-hCG at 1:1000 overnight at 2-8°C. Secondary Antibody: Donkey Anti-Goat IgG mx8 HRP Conjugated (p/n 605-703-125-0025) at 1:40,000 for 30 mins at RT. Block: BlockOut Buffer (p/n MB-073). Exposure: 30 sec. Predicted MW: alpha subunit ~14.9kDa, full hCG ~37kDa, luteinizing hormone (LH) ~29kDa, thyroid stimulating hormone (TSH) ~28kDa, follicle stimulating hormone (FSH) ~30kDa. Observed MW: alpha subunit ~15-20kDa, full hCG ~35kDa.

## Anti-hCG Alpha (GOAT) Antibody - Background

Human Chorionic Gonadotropin (hCG) is a member of the glycoprotein hormone family which includes lutropin, follitropin, and thyrotropin. These hormones are heterodimers consisting of a common alpha subunit, and a unique beta chain which confers their biological specificity to the hormones. These hormones bind specific receptors on target cells that in turn activate downstream signaling pathways. HCG is secreted in large quantities by normal trophoblasts. Its presence is in trace amounts in non-pregnant urine and sera but rises sharply during pregnancy. CGA is extracellular and secreted, expressed in over 90 organs, but has its highest expression level in placenta. Anti-hCG alpha detects hCG alpha in human cells and tissue and could be useful in detecting cells and tumors of trophoblastic origin such as choriocarcinoma. Anti-hCG Antibody is useful for researchers interested in pregnancy, hormone research, and cancer research.