

**Anti-GFP (GOAT) Antibody Fluorescein Conjugated Min X Hu Ms and Rt Serum Proteins**  
**GFP Antibody Fluorescein Conjugated Pre-adsorbed**  
**Catalog # ASR5102****Specification****Anti-GFP (GOAT) Antibody Fluorescein Conjugated Min X Hu Ms and Rt Serum Proteins - Product Information**

Host	Goat
Conjugate	Fluorescein (FITC)
FP Value	3.85
Reactivity	GFP
Clonality	Polyclonal
Application	WB, IHC, I, LCI
Application Note	Anti-GFP Fluorescein Conjugated Antibody has been tested by dot blot and western blot and is suitable for immunomicroscopy and flow cytometry or FACS analysis as well as other antibody based fluorescent assays requiring lot-to-lot consistency.
Physical State	Lyophilized
Buffer	0.02 M Potassium Phosphate, 0.15 M Sodium Chloride, pH 7.2
Immunogen	Recombinant Green Fluorescent Protein (GFP) fusion protein corresponding to the full length amino acid sequence (246aa) derived from the jellyfish <i>Aequorea victoria</i> .
Reconstitution Volume	1.0 mL
Reconstitution Buffer	Restore with deionized water (or equivalent)
Stabilizer	10 mg/mL Bovine Serum Albumin (BSA) - Immunoglobulin and Protease free
Preservative	0.01% (w/v) Sodium Azide

**Anti-GFP (GOAT) Antibody Fluorescein Conjugated Min X Hu Ms and Rt Serum Proteins - Additional Information****Purity**

GFP Fluorescein Conjugated Antibody was prepared from monospecific antiserum by immunoaffinity chromatography using Green Fluorescent Protein (*Aequorea victoria*) coupled to agarose beads followed by solid phase adsorption(s) to remove any unwanted reactivities. Assay by immunoelectrophoresis resulted in a single precipitin arc against anti-Goat Serum, anti-Fluorescein and purified and partially purified Green Fluorescent Protein (*Aequorea victoria*). No reaction was observed against Human, Mouse and Rat Serum Proteins.

**Storage Condition**

Store anti-GFP at 4° C prior to restoration. For extended storage aliquot contents and freeze at -20° C or below. Avoid cycles of freezing and thawing. Centrifuge product if not completely clear after standing at room temperature. This product is stable for several weeks at 4° C as an undiluted liquid. Dilute only prior to immediate use.

**Precautions Note**

This product is for research use only and is not intended for therapeutic or diagnostic applications.

**Anti-GFP (GOAT) Antibody Fluorescein Conjugated Min X Hu Ms and Rt Serum Proteins - Protein Information**

**Name** GFP

**Function**

Energy-transfer acceptor. Its role is to transduce the blue chemiluminescence of the protein aequorin into green fluorescent light by energy transfer. Fluoresces in vivo upon receiving energy from the Ca(2+)-activated photoprotein aequorin.

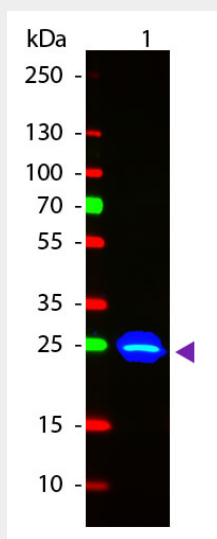
**Tissue Location**

Photocytes.

**Anti-GFP (GOAT) Antibody Fluorescein Conjugated Min X Hu Ms and Rt Serum Proteins - Protocols**

Provided below are standard protocols that you may find useful for product applications.

- [Western Blot](#)
- [Blocking Peptides](#)
- [Dot Blot](#)
- [Immunohistochemistry](#)
- [Immunofluorescence](#)
- [Immunoprecipitation](#)
- [Flow Cytometry](#)
- [Cell Culture](#)

**Anti-GFP (GOAT) Antibody Fluorescein Conjugated Min X Hu Ms and Rt Serum Proteins - Images**

Western Blot of Goat anti-GFP Fluorescein Conjugated Antibody. Lane 1: GFP. Lane 2: None. Load: 50 ng per lane. Primary antibody: None. Secondary antibody: Fluorescein goat secondary antibody

at 1:1,000 for 60 min at RT. Block: MB-070 for 30 min at RT. Predicted/Observed size: 28 kDa, 33 kDa for GFP. Other band(s): None.

**Anti-GFP (GOAT) Antibody Fluorescein Conjugated Min X Hu Ms and Rt Serum Proteins - Background**

GFP Fluorescein Conjugated Antibody is designed for immunofluorescence microscopy, fluorescence based plate assays (FLISA) and fluorescent western blotting. This product is also suitable for multiplex analysis, including multicolor imaging, utilizing various commercial platforms.