

Anti-GFP (GOAT) Antibody Alkaline Phosphatase Conjugated
GFP Antibody Alkaline Phosphatase Conjugated
Catalog # ASR5112**Specification**

Anti-GFP (GOAT) Antibody Alkaline Phosphatase Conjugated - Product Information

Host	Goat
Conjugate	Alkaline Phosphatase (Calf Intestine)
Reactivity	GFP
Clonality	Polyclonal
Application	WB, IHC, E, I, LCI
Application Note	Anti-GFP is designed to detect GFP and its variants. Anti-GFP Alkaline Phosphatase conjugated antibody has been tested by ELISA, dot blot, and western blot. This antibody can be used to detect GFP by ELISA (sandwich or capture) for the direct binding of antigen and recognizes wild type, recombinant and enhanced forms of GFP. Biotin conjugated polyclonal anti-GFP used in a sandwich ELISA is well suited to titrate GFP in solution using this antibody in combination with Rockland's monoclonal anti-GFP (600-301-215) using either form of the antibody as the capture or detection antibodies. However, use the monoclonal form only for the detection of wild type or recombinant GFP as this form does not sufficiently detect 'enhanced' GFP. The detection antibody is typically conjugated to biotin and subsequently reacted with streptavidin conjugated HRP (code # S000-03). Fluorochrome conjugated polyclonal anti-GFP can be used to detect GFP by immunofluorescence microscopy in prokaryotic (E.coli) and eukaryotic (CHO cells) expression systems and can detect GFP containing inserts. Significant amplification of signal is achieved using fluorochrome conjugated polyclonal anti-GFP relative to the fluorescence of GFP alone. For immunoblotting use either alkaline phosphatase or peroxidase conjugated polyclonal anti-GFP to detect GFP or GFP containing proteins on western blots
Physical State	Liquid (sterile filtered)
Buffer	0.05 M Tris Chloride, 0.15M Sodium Chloride, 0.001M Magnesium Chloride, 0.0001M Zinc Chloride, 50% (v/v) Glycerol; pH 8.0

Immunogen

Recombinant Green Fluorescent Protein (GFP) fusion protein corresponding to the full length amino acid sequence (246aa) derived from the jellyfish Aequorea victoria.

Stabilizer

10 mg/mL Bovine Serum Albumin (BSA) - Immunoglobulin and Protease free

Preservative

0.1% (w/v) Sodium Azide**Anti-GFP (GOAT) Antibody Alkaline Phosphatase Conjugated - Additional Information****Purity**

Anti-GFP Antibody was prepared from monospecific antiserum by immunoaffinity chromatography using Green Fluorescent Protein (Aequorea victoria) coupled to agarose beads followed by solid phase adsorption(s) to remove any unwanted reactivities. Assay by immunoelectrophoresis resulted in a single precipitin arc against anti-Goat Serum, anti-Alkaline Phosphatase and purified and partially purified Green Fluorescent Protein (Aequorea victoria) Serum. No reaction was observed against Human, Mouse and Rat Serum Proteins.

Storage Condition

Store vial at 4° C before opening. DO NOT FREEZE. This product is stable at 4° C as an undiluted liquid. Dilute only prior to immediate use. Freezing alkaline phosphatase conjugates will result in a substantial loss of enzymatic activity.

Precautions Note

This product is for research use only and is not intended for therapeutic or diagnostic applications.

Anti-GFP (GOAT) Antibody Alkaline Phosphatase Conjugated - Protein Information**Name** GFP**Function**

Energy-transfer acceptor. Its role is to transduce the blue chemiluminescence of the protein aequorin into green fluorescent light by energy transfer. Fluoresces in vivo upon receiving energy from the Ca(2+)-activated photoprotein aequorin.

Tissue Location

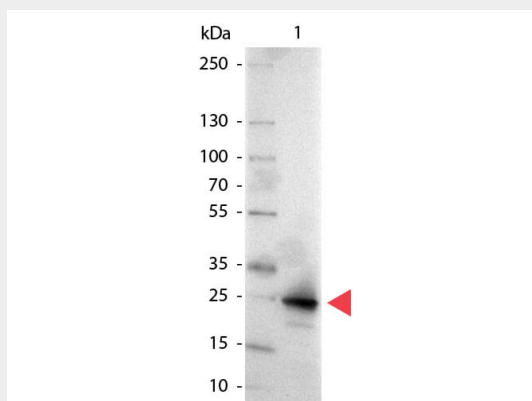
Photocytes.

Anti-GFP (GOAT) Antibody Alkaline Phosphatase Conjugated - Protocols

Provided below are standard protocols that you may find useful for product applications.

- [Western Blot](#)
- [Blocking Peptides](#)
- [Dot Blot](#)
- [Immunohistochemistry](#)
- [Immunofluorescence](#)
- [Immunoprecipitation](#)
- [Flow Cytometry](#)
- [Cell Culture](#)

Anti-GFP (GOAT) Antibody Alkaline Phosphatase Conjugated - Images



Western Blot of Alkaline Phosphatase conjugated Goat anti-GFP antibody. Lane 1: GFP. Lane 2: none. Load: 50 ng per lane. Primary antibody: none. Secondary antibody: Alkaline Phosphatase GFP secondary antibody at 1:1000 for 60 min at RT. Block: MB-070 for 30 min RT. Predicted/Observed size: 28 kDa for GFP. Other band(s): none.

Anti-GFP (GOAT) Antibody Alkaline Phosphatase Conjugated - Background

Conjugated GFP antibody is ideal for western blotting, ELISA and Immunohistochemistry. Green fluorescent protein is a 27 kDa protein produced from the jellyfish *Aequorea victoria*, which emits green light (emission peak at a wavelength of 509nm) when excited by blue light. GFP is an important tool in cell biology research. GFP is widely used enabling researchers to visualize and localize GFP-tagged proteins within living cells without the need for chemical staining.