

**Anti-LDB2 (CLIM1) (RABBIT) Antibody**  
**Ldb2 Antibody**  
**Catalog # ASR5237****Specification**

---

**Anti-LDB2 (CLIM1) (RABBIT) Antibody - Product Information**

Host	Rabbit
Conjugate	Unconjugated
Target Species	Mouse
Reactivity	Human, Mouse
Clonality	Polyclonal
Application	WB, IHC, E, I, LCI
Application Note	This affinity purified antibody has been tested for use in ELISA, IHC, and by western blot. Specific conditions for reactivity should be optimized by the end user. Expect a band approximately 43 kDa in size corresponding to LDB2 by western blotting in the appropriate cell lysate or extract.
Physical State	Liquid (sterile filtered)
Buffer	0.02 M Potassium Phosphate, 0.15 M Sodium Chloride, pH 7.2
Immunogen	This affinity purified antibody was prepared from whole rabbit serum produced by repeated immunizations with a synthetic peptide corresponding to an internal region near aa 100-125 of Mouse LDB2.
Preservative	0.01% (w/v) Sodium Azide

**Anti-LDB2 (CLIM1) (RABBIT) Antibody - Additional Information****Gene ID** 16826**Other Names**  
16826**Purity**

This affinity purified antibody is directed against mouse LDB2. The product was affinity purified from monospecific antiserum by immunoaffinity purification. A BLAST analysis was used to suggest reactivity with this protein from mouse, human, chimpanzee, dog, rat and chicken based on 100% homology for the immunogen sequence. Cross reactivity with LDB2 homologues from other sources has not been determined.

**Storage Condition**

Store vial at -20° C prior to opening. Aliquot contents and freeze at -20° C or below for extended storage. Avoid cycles of freezing and thawing. Centrifuge product if not completely clear after standing at room temperature. This product is stable for several weeks at 4° C as an undiluted liquid. Dilute only prior to immediate use.

**Precautions Note**

This product is for research use only and is not intended for therapeutic or diagnostic applications.

**Anti-LDB2 (CLIM1) (RABBIT) Antibody - Protein Information**

**Name** Ldb2

**Synonyms** Clim1

**Function**

Transcription cofactor (PubMed:<a href="http://www.uniprot.org/citations/9192866" target="\_blank">9192866</a>). Binds to the LIM domain of a wide variety of LIM domain-containing transcription factors (PubMed:<a href="http://www.uniprot.org/citations/9192866" target="\_blank">9192866</a>).

**Cellular Location**

Nucleus. Note=Colocalizes with SLK at leading edges (PubMed:19675209).

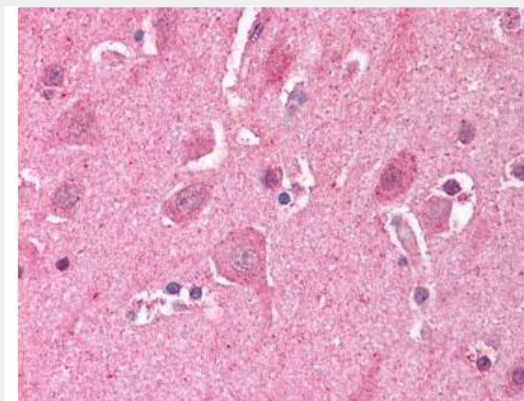
**Tissue Location**

Expressed in multiple tissues including heart, brain, liver, kidney, testis, lung and muscle, with expression highest in the brain, trigeminal ganglia, and lung

**Anti-LDB2 (CLIM1) (RABBIT) Antibody - Protocols**

Provided below are standard protocols that you may find useful for product applications.

- [Western Blot](#)
- [Blocking Peptides](#)
- [Dot Blot](#)
- [Immunohistochemistry](#)
- [Immunofluorescence](#)
- [Immunoprecipitation](#)
- [Flow Cytometry](#)
- [Cell Culture](#)

**Anti-LDB2 (CLIM1) (RABBIT) Antibody - Images**

Rockland's Affinity Purified anti-LDB2 (Clim1) antibody was used at a 5 µg/ml to detect LDB2 in human brain cortex tissue. The image shows the localization of antibody as the precipitated red

signal, with a hematoxylin purple nuclear counter stain. Tissue was formalin-fixed and paraffin embedded.

#### **Anti-LDB2 (CLIM1) (RABBIT) Antibody - Background**

LDB2 (LIM homeobox protein cofactor CLIM-1a). It is suggested that LIM domain binding proteins (LDB1, LDB2 and LDB3) act synergistically to enhance transcriptional efficiency by acting as co-factors for LIM homeodomain and Otx class transcription factors both of which have essential roles in development. LDB2 is a close homologue of LDB1. LDBs are homologs of the Drosophila Chip protein. Three members of the Ldb gene family (Ldb1, Ldb2 and Ldb3) from the zebrafish, *Danio rerio*, share 95%, 73% and 62% amino acid identity with mouse Ldb1, respectively.