

Anti-SPANX (pan) (RABBIT) Antibody
SPANX Antibody
Catalog # ASR5338**Specification****Anti-SPANX (pan) (RABBIT) Antibody - Product Information**

Host	Rabbit
Conjugate	Unconjugated
Target Species	Human
Reactivity	Human
Clonality	Polyclonal
Application	WB, E, I, LCI
Application Note	This affinity purified antibody has been tested for use in ELISA and by western blot. Specific conditions for reactivity should be optimized by the end user. Expect a band ~97kDa.
Physical State	Liquid (sterile filtered)
Buffer	0.02 M Potassium Phosphate, 0.15 M Sodium Chloride, pH 7.2
Immunogen	This affinity purified antibody was prepared from whole rabbit serum produced by repeated immunizations with a synthetic peptide corresponding to an internal region near amino acids 25-50 of human SPANX protein.
Preservative	0.01% (w/v) Sodium Azide

Anti-SPANX (pan) (RABBIT) Antibody - Additional Information**Gene ID** 64663**Other Names**
64663**Purity**

This affinity-purified antibody is directed against human SPANX proteins. The immunogen sequence is present within SPANX-A, SPANX-B, SPANX-C, SPANX-D and SPANX-N, but not present within SPANX-E. The product was affinity purified from monospecific antiserum by immunoaffinity purification. A BLAST analysis was used to suggest cross reactivity with SPANX proteins from gorilla and chimpanzee. Reactivity against homologues from other sources is not known.

Storage Condition

Store vial at -20° C prior to opening. Aliquot contents and freeze at -20° C or below for extended storage. Avoid cycles of freezing and thawing. Centrifuge product if not completely clear after standing at room temperature. This product is stable for several weeks at 4° C as an undiluted liquid. Dilute only prior to immediate use.

Precautions Note

This product is for research use only and is not intended for therapeutic or diagnostic applications.

Anti-SPANX (pan) (RABBIT) Antibody - Protein Information

Name SPANXC

Cellular Location

Cytoplasm. Nucleus. Note=Associated with nuclear craters

Tissue Location

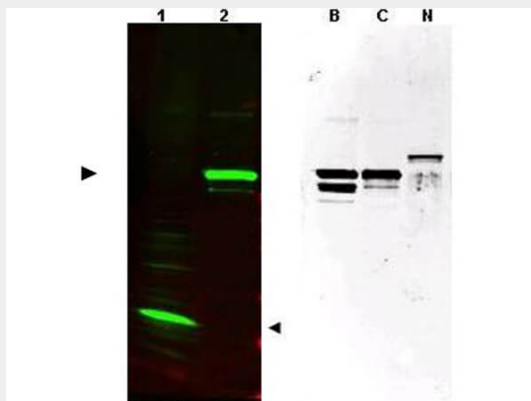
Detected in testis, melanoma and bladder carcinoma.

Anti-SPANX (pan) (RABBIT) Antibody - Protocols

Provided below are standard protocols that you may find useful for product applications.

- [Western Blot](#)
- [Blocking Peptides](#)
- [Dot Blot](#)
- [Immunohistochemistry](#)
- [Immunofluorescence](#)
- [Immunoprecipitation](#)
- [Flow Cytometry](#)
- [Cell Culture](#)

Anti-SPANX (pan) (RABBIT) Antibody - Images



Western blot using Rockland's affinity purified anti-SPANX (pan) antibody shows detection of a band at ~17kDa corresponding to SPANX-C present in a nuclear extract from VWM105 cells in Lane 1. VWM105 cells are derived from a human melanoma and are positive for SPANX proteins. Lane 2 shows reactivity with a purified recombinant SPANX-C fusion protein ~97kDa. The right panel shows similar reactivity with purified recombinant SPANX-B, SPANX-C and SPANX-N proteins. Proteins were separated by SDS-PAGE, transferred to nitrocellulose, and probed with the primary antibody diluted to 1:1,000. IRDye800 conjugated Gt-a-Rabbit IgG [H&L] MX (p/n 611-132-122) was used (left). IRDye is a trademark of LI-COR, Inc. Size estimation was made by comparison to prestained MW markers. Personal Communication. Vladimir Larionov, NIH, CCR, Bethesda, MD.

Anti-SPANX (pan) (RABBIT) Antibody - Background

This antibody is designed, produced, and validated as part of a collaboration between Rockland and the National Cancer Institute (NCI) and is suitable for Cancer, Immunology and Nuclear

Signaling research. Human Sperm Proteins Associated with the Nucleus on X-chromosome (SPANX) are relatively low molecular weight cytoplasmic proteins found in testis and sperm. Their expression in other tissues indicates malignancies. Family members are observed as proteins that range from 15 to 20 kDa.