

Anti-Lysine Acetylated (AcK) (RABBIT) Antibody
Lysine Acetylated Antibody
Catalog # ASR5360**Specification**

Anti-Lysine Acetylated (AcK) (RABBIT) Antibody - Product Information

Host	Rabbit
Conjugate	Unconjugated
Clonality	Polyclonal
Application	WB, IHC, E, IP, I, LCI
Application Note	Anti-Lysine Acetylated Antibody is suitable for use in ELISA, western blotting, immunofluorescence microscopy, and immunoprecipitation assays. Although not tested, this antibody is likely functional in RIA, flow cytometry, and immunohistochemistry.
Physical State	Liquid (sterile filtered)
Buffer	0.02 M Potassium Phosphate, 0.15 M Sodium Chloride, pH 7.2
Immunogen	Anti-Lysine Acetylated Antibody was prepared from whole rabbit serum produced by repeated immunizations with acetylated lysine conjugated KLH.
Stabilizer	50% (v/v) Glycerol

Anti-Lysine Acetylated (AcK) (RABBIT) Antibody - Additional Information**Purity**

Anti-Lysine Acetylated Antibody was prepared from monospecific antiserum by immunoaffinity chromatography using acetylated lysine peptide coupled to agarose. Assay by immunoelectrophoresis resulted in a single precipitin arc against anti-Rabbit IgG. The antibody reacts specifically with acetylated lysine residues.

Storage Condition

Store vial at -20° C prior to opening. Aliquot contents and freeze at -20° C or below for extended storage. Avoid cycles of freezing and thawing. Centrifuge product if not completely clear after standing at room temperature. This product is stable for several weeks at 4° C as an undiluted liquid. Dilute only prior to immediate use.

Precautions Note

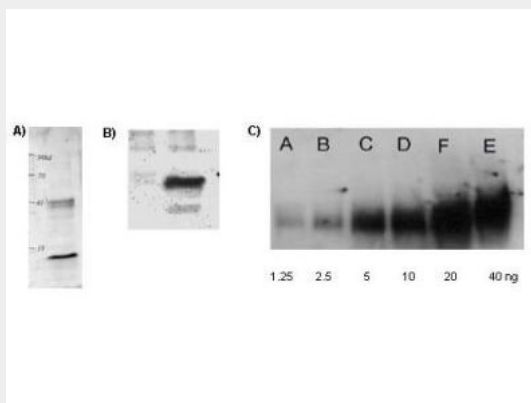
This product is for research use only and is not intended for therapeutic or diagnostic applications.

Anti-Lysine Acetylated (AcK) (RABBIT) Antibody - Protein Information**Anti-Lysine Acetylated (AcK) (RABBIT) Antibody - Protocols**

Provided below are standard protocols that you may find useful for product applications.

- [Western Blot](#)
- [Blocking Peptides](#)
- [Dot Blot](#)
- [Immunohistochemistry](#)
- [Immunofluorescence](#)
- [Immunoprecipitation](#)
- [Flow Cytometry](#)
- [Cell Culture](#)

Anti-Lysine Acetylated (AcK) (RABBIT) Antibody - Images



Rockland's Affinity Purified anti-Acetylated Lysine (AcK) antibody is shown to detect acetylated histone in TSA-treated mouse spleen cell lysate (Panel A); control (left lane) and TSA-treated mouse spleen cell lysate (right lane) in panel B; and in acetylated BSA loaded as indicated (panel C).

Anti-Lysine Acetylated (AcK) (RABBIT) Antibody - Background

Acetylation refers to the process of introducing an acetyl group into a compound. Proteins are typically acetylated on lysine residues and this reaction relies on acetyl-coenzyme A as the acetyl group donor. Acetylated Lysine antibody is useful in Cancer, Cell Biology and Chromatin & Nuclear Signaling research.