

Anti-Cenexin-1 pS796 (RABBIT) Antibody
Cenexin-1 phospho S796 Antibody
Catalog # ASR5416**Specification**

Anti-Cenexin-1 pS796 (RABBIT) Antibody - Product Information

Host	Rabbit
Conjugate	Unconjugated
Target Species	Human
Reactivity	Chimpanzee, Human
Clonality	Polyclonal
Application	WB, IHC, E, I, LCI
Application Note	This affinity purified antibody has been tested for use in ELISA and western blotting. Specific conditions for reactivity should be optimized by the end user. Expect a band approximately 93 kDa in size corresponding to phosphorylated Cenexin-1 by western blotting in the appropriate cell lysate or extract. This phospho-specific polyclonal antibody reacts with human Cenexin-1 pS796 and shows minimal reactivity by ELISA against the non-phosphorylated form of the immunizing peptide.
Physical State	Liquid (sterile filtered)
Buffer	0.02 M Potassium Phosphate, 0.15 M Sodium Chloride, pH 7.2
Immunogen	This affinity purified antibody was prepared from whole rabbit serum produced by repeated immunizations with a synthetic peptide corresponding to residues near S796 of human cenexin-1.
Preservative	0.01% (w/v) Sodium Azide

Anti-Cenexin-1 pS796 (RABBIT) Antibody - Additional Information**Gene ID** 4957**Other Names**
4957**Purity**

This product was affinity purified from monospecific antiserum by immunoaffinity chromatography using phospho-peptide coupled to agarose beads followed by solid phase adsorption against nonphospho-peptide. This antibody is specific for human Cenexin-1 protein phosphorylated at S796. A BLAST analysis was used to suggest cross-reactivity with Cenexin-1 from human, chimpanzee and macaque based on 100% homology with the immunizing sequence. Cross-reactivity with Cenexin-1 from other sources has not been determined.

Storage Condition

Store vial at -20° C prior to opening. Aliquot contents and freeze at -20° C or below for extended storage. Avoid cycles of freezing and thawing. Centrifuge product if not completely clear after standing at room temperature. This product is stable for several weeks at 4° C as an undiluted liquid. Dilute only prior to immediate use.

Precautions Note

This product is for research use only and is not intended for therapeutic or diagnostic applications.

Anti-Cenexin-1 pS796 (RABBIT) Antibody - Protein Information**Name** ODF2**Function**

Seems to be a major component of sperm tail outer dense fibers (ODF). ODFs are filamentous structures located on the outside of the axoneme in the midpiece and principal piece of the mammalian sperm tail and may help to maintain the passive elastic structures and elastic recoil of the sperm tail. May have a modulating influence on sperm motility. Functions as a general scaffold protein that is specifically localized at the distal/subdistal appendages of mother centrioles. Component of the centrosome matrix required for the localization of PLK1 and NIN to the centrosomes. Required for the formation and/or maintenance of normal CETN1 assembly.

Cellular Location

Cytoplasm, cytoskeleton, microtubule organizing center, centrosome. Cell projection, cilium {ECO:0000250|UniProtKB:A3KGV1}. Cytoplasm, cytoskeleton, microtubule organizing center, centrosome, centriole Cytoplasm, cytoskeleton, spindle pole {ECO:0000250|UniProtKB:A3KGV1} Cell projection, cilium, flagellum {ECO:0000250|UniProtKB:A3KGV1} Note=Localized at the microtubule organizing centers in interphase and spindle poles in mitosis. Localized at the distal/subdistal appendages of mother centrioles. {ECO:0000250|UniProtKB:A3KGV1}

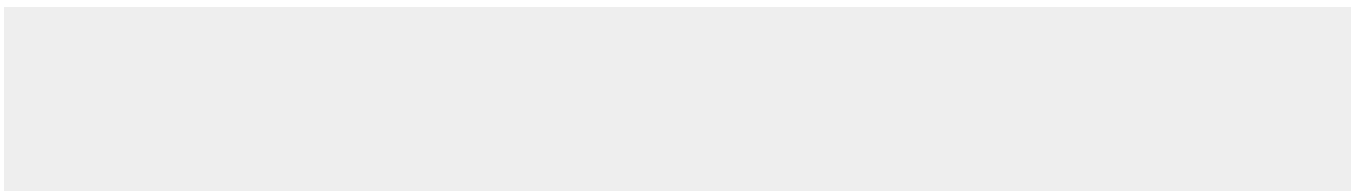
Tissue Location

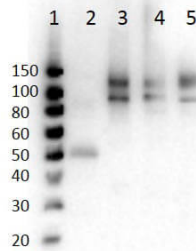
Testis-specific (at protein level). Highly expressed in cytoplasm of step 2 round spermatids. Detected in the middle piece and extends to about half the principal piece of the sperm tails.

Anti-Cenexin-1 pS796 (RABBIT) Antibody - Protocols

Provided below are standard protocols that you may find useful for product applications.

- [Western Blot](#)
- [Blocking Peptides](#)
- [Dot Blot](#)
- [Immunohistochemistry](#)
- [Immunofluorescence](#)
- [Immunoprecipitation](#)
- [Flow Cytometry](#)
- [Cell Culture](#)

Anti-Cenexin-1 pS796 (RABBIT) Antibody - Images



Western Blot of Rabbit Anti-Cenexin-1 pS796. Lane 1: MW. Lane 2: Human Semen Lysate. Lane 3: MCF7 WCL (p/n W09-000-360). Lane 4: Molt 4 WCL (p/n W09-001-GK2). Lane 5: HeLa WCL (p/n W09-000-364). Load: 10 µg per lane. Blocking: (p/n MB-073). Primary Antibody: Anti-Cenexin-1 pS796 at 1 µg/mL overnight at 2-8°C. Secondary Antibody: Goat anti-Rabbit HRP (p/n 611-103-122) 1:40,000 diluted in (p/n MB-073) for 30 minutes at RT. Expect: 93kDa.

Anti-Cenexin-1 pS796 (RABBIT) Antibody - Background

Cenexin-1, also known as ODF2 and outer dense fiber of sperm tails 2, are cytoskeletal structures that surround the axoneme in the middle piece and principal piece of the sperm tail. The fibers function in maintaining the elastic structure and recoil of the sperm tail as well as in protecting the tail from shear forces during epididymal transport and ejaculation. Defects in the outer dense fiber proteins lead to abnormal sperm morphology and infertility. Cenexin-1 is one of the major outer dense fiber proteins. Multiple protein isoforms are encoded by transcript variants of the cenexin gene; however, not all isoforms and variants have been fully described.