

Anti-RON pY1353 (RABBIT) Antibody
RON phospho Y1353 Antibody
Catalog # ASR5525**Specification****Anti-RON pY1353 (RABBIT) Antibody - Product Information**

Host	Rabbit
Conjugate	Unconjugated
Target Species	Human
Reactivity	Human
Clonality	Polyclonal
Application	WB, E, I, LCI
Application Note	Anti-ROnpY1353 Antibody has been tested for use in ELISA and by western blot. Specific conditions for reactivity should be optimized by the end user. Expect a predominant band at ~ 152.3 kDa corresponding to full length protein by western blotting in the appropriate cell lysate or extract. This phospho-specific polyclonal antibody reacts with human RON pY1353 and shows minimal reactivity by ELISA against the non-phosphorylated form of the immunizing peptide.
Physical State	Liquid (sterile filtered)
Buffer	0.02 M Potassium Phosphate, 0.15 M Sodium Chloride, pH 7.2
Immunogen	Anti-ROnpY1353 Antibody was produced in rabbits by repeated immunizations with a synthetic peptide corresponding to residues surrounding Y1353 of human RON protein.
Preservative	0.01% (w/v) Sodium Azide

Anti-RON pY1353 (RABBIT) Antibody - Additional Information**Gene ID** 4486**Other Names**
4486**Purity**

Anti-ROnpY1353 was prepared from monospecific antiserum by immunoaffinity chromatography using phospho peptide coupled to agarose beads followed by solid phase adsorptions against non-phospho peptide and non-specific peptide to remove any unwanted reactivities. Assay by immunoelectrophoresis resulted in a single precipitin arc against anti-Rabbit Serum. This antibody is specific for human RON protein phosphorylated at Y1353. Cross-reactivity against RON from other species may occur but has not yet been tested.

Storage Condition

Store vial at -20° C prior to opening. Aliquot contents and freeze at -20° C or below for extended storage. Avoid cycles of freezing and thawing. Centrifuge product if not completely clear after standing at room temperature. This product is stable for several weeks at 4° C as an undiluted liquid. Dilute only prior to immediate use.

Precautions Note

This product is for research use only and is not intended for therapeutic or diagnostic applications.

Anti-RON pY1353 (RABBIT) Antibody - Protein Information

Name MST1R

Synonyms PTK8, RON

Function

Receptor tyrosine kinase that transduces signals from the extracellular matrix into the cytoplasm by binding to MST1 ligand. Regulates many physiological processes including cell survival, migration and differentiation. Ligand binding at the cell surface induces autophosphorylation of RON on its intracellular domain that provides docking sites for downstream signaling molecules. Following activation by ligand, interacts with the PI3-kinase subunit PIK3R1, PLCG1 or the adapter GAB1. Recruitment of these downstream effectors by RON leads to the activation of several signaling cascades including the RAS-ERK, PI3 kinase-AKT, or PLCgamma-PKC. RON signaling activates the wound healing response by promoting epithelial cell migration, proliferation as well as survival at the wound site. Also plays a role in the innate immune response by regulating the migration and phagocytic activity of macrophages. Alternatively, RON can also promote signals such as cell migration and proliferation in response to growth factors other than MST1 ligand.

Cellular Location

Membrane; Single-pass type I membrane protein.

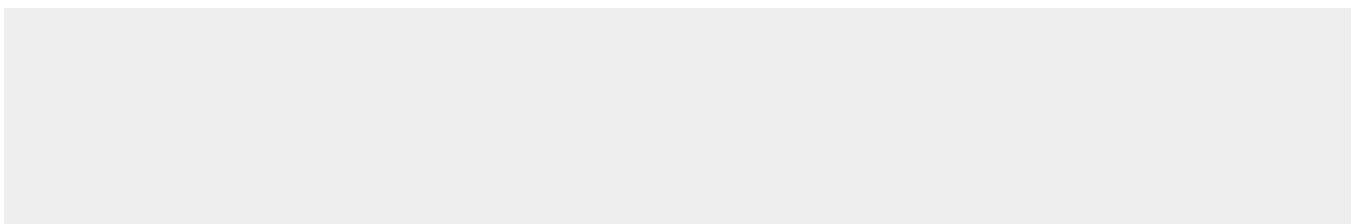
Tissue Location

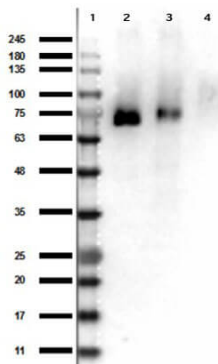
Expressed in colon, skin, lung and bone marrow.

Anti-RON pY1353 (RABBIT) Antibody - Protocols

Provided below are standard protocols that you may find useful for product applications.

- [Western Blot](#)
- [Blocking Peptides](#)
- [Dot Blot](#)
- [Immunohistochemistry](#)
- [Immunofluorescence](#)
- [Immunoprecipitation](#)
- [Flow Cytometry](#)
- [Cell Culture](#)

Anti-RON pY1353 (RABBIT) Antibody - Images



Western Blot Results of Rabbit Anti-RONpY1353 Antibody. Lane 1: Opal Prestained Ladder - (p/n MB-210-0500). Lane 2: rRON-GST. Lane 3: rPhospho-RON-GST. Lane 4: GST alone (p/n 000-001-200). Load: 50ng. Primary Antibody: Anti-RONpY1353 at 1ug/mL overnight at 4°C. Secondary Antibody: Goat anti-Rabbit HRP conjugated - (p/n 611-103-122) at 1:70,000. Block: Blocking Buffer (p/n MB-070) for 30min at RT.

Anti-RON pY1353 (RABBIT) Antibody - Background

RON pY1353 antibody detects phosphorylated RON. RON is a member of the protein kinase superfamily. Protein kinases mediate most of the signal transduction in eukaryotic cells, regulating cellular metabolism, transcription, cell cycle progression, cytoskeletal rearrangement and cell movement, apoptosis, and differentiation. RON is a heterodimer composed of an α chain and a β chain. The α chain is completely extracellular, whereas the β chain traverses the cell membrane and contains the intracellular tyrosine kinase and regulatory elements. Anti-RON Antibody is ideal for investigators involved in Cell Signaling, Cancer, Neuroscience and Signal Transduction research.