

**Anti-Protein Kinase C delta-Binding Protein (RABBIT) Antibody**  
**Protein Kinase C delta-Binding Protein Antibody**  
**Catalog # ASR5682****Specification**

---

**Anti-Protein Kinase C delta-Binding Protein (RABBIT) Antibody - Product Information**

Host	Rabbit
Conjugate	Unconjugated
Target Species	Human
Reactivity	Human
Clonality	Polyclonal
Application	WB, IHC, E, I, LCI
Application Note	Anti-Protein Kinase C delta Binding Protein antibody is tested in immunohistochemistry and ELISA and useful for Western Blot. Specific conditions for reactivity should be optimized by the end user. Expect a band approximately ~37kDa corresponding to the appropriate cell lysate or extract.
Physical State	Liquid (sterile filtered)
Buffer	0.02 M Potassium Phosphate, 0.15 M Sodium Chloride, pH 7.2
Immunogen	Protein Kinase C delta-Binding Protein affinity purified antibody was prepared from whole rabbit serum produced by repeated immunizations with a synthetic peptide corresponding to the C-terminal region of human Protein Kinase C delta-Binding Protein.
Stabilizer	30% Glycerol

**Anti-Protein Kinase C delta-Binding Protein (RABBIT) Antibody - Additional Information****Gene ID** 112464**Other Names**  
112464**Purity**

Anti-Protein Kinase C delta-Binding Protein was affinity purified from monospecific antiserum by immunoaffinity chromatography. A BLAST analysis was used to suggest cross-reactivity with rat, human, and mouse based on 100% sequence homology. Cross-reactivity with Protein Kinase C delta-Binding Protein from other sources has not been determined.

**Storage Condition**

Store vial at -20° C prior to opening. Aliquot contents and freeze at -20° C or below for extended storage. Avoid cycles of freezing and thawing. Centrifuge product if not completely clear after standing at room temperature. This product is stable for several weeks at 4° C as an undiluted liquid. Dilute only prior to immediate use.

**Precautions Note**

This product is for research use only and is not intended for therapeutic or diagnostic applications.

**Anti-Protein Kinase C delta-Binding Protein (RABBIT) Antibody - Protein Information**

**Name** CAVIN3 ([HGNC:9400](#))

**Synonyms** PRKCDBP, SRBC

**Function**

Regulates the traffic and/or budding of caveolae (PubMed:<a href="http://www.uniprot.org/citations/19262564" target="\_blank">19262564</a>). Plays a role in caveola formation in a tissue- specific manner. Required for the formation of caveolae in smooth muscle but not in the lung and heart endothelial cells. Regulates the equilibrium between cell surface-associated and cell surface- dissociated caveolae by promoting the rapid release of caveolae from the cell surface. Plays a role in the regulation of the circadian clock. Modulates the period length and phase of circadian gene expression and also regulates expression and interaction of the core clock components PER1/2 and CRY1/2 (By similarity).

**Cellular Location**

Cytoplasm {ECO:0000250|UniProtKB:Q91VJ2}. Membrane, caveola. Cytoplasm, cytosol {ECO:0000250|UniProtKB:Q91VJ2}. Note=Localizes in the caveolae in a caveolin-dependent manner.

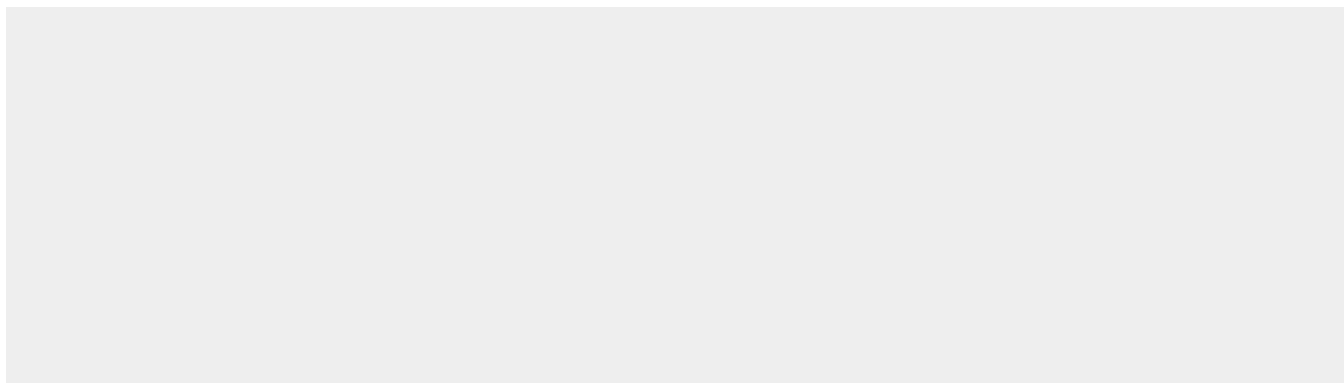
**Tissue Location**

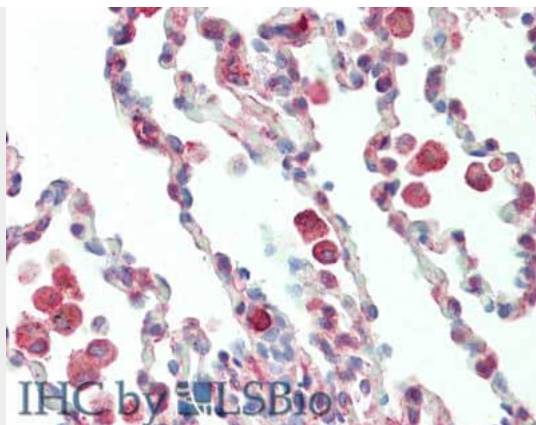
Skeletal muscle, liver, stomach, lung, kidney and heart (at protein level). Strongly expressed in mammary and epithelial cells.

**Anti-Protein Kinase C delta-Binding Protein (RABBIT) Antibody - Protocols**

Provided below are standard protocols that you may find useful for product applications.

- [Western Blot](#)
- [Blocking Peptides](#)
- [Dot Blot](#)
- [Immunohistochemistry](#)
- [Immunofluorescence](#)
- [Immunoprecipitation](#)
- [Flow Cytometry](#)
- [Cell Culture](#)

**Anti-Protein Kinase C delta-Binding Protein (RABBIT) Antibody - Images**



Immunohistochemistry of rabbit anti-Protein Kinase C delta Binding Protein antibody. Tissue: Lung. Fixation: formalin fixed paraffin embedded. Antigen retrieval: not required. Primary antibody: Anti-Protein Kinase C delta Binding Protein at 5 µg/mL for 1 h at RT. Secondary antibody: Peroxidase rabbit secondary antibody at 1:10,000 for 45 min at RT. Staining: Protein Kinase C delta Binding Protein as precipitated red signal with hematoxylin purple nuclear counterstain.

#### **Anti-Protein Kinase C delta-Binding Protein (RABBIT) Antibody - Background**

Protein Kinase C delta-Binding Protein antibody, once activated by diacylglycerol, phosphorylates various cellular proteins. It also functions as a receptor for phorbol esters and may be a factor in antigen-dependent control of B-cell function. Anti-Protein Kinase C delta-Binding Protein antibody is ideal for researchers interested in Neuroscience, Cancer, and Signal Transduction research.