

Anti-HUMAN SERUM ALBUMIN (RABBIT) Antibody Fluorescein Conjugated
Human Serum Albumin Antibody Fluorescein Conjugated
Catalog # ASR5773**Specification**

Anti-HUMAN SERUM ALBUMIN (RABBIT) Antibody Fluorescein Conjugated - Product Information

Host	Rabbit
Conjugate	Fluorescein (FITC)
FP Value	3.7
Target Species	Human
Reactivity	Human
Clonality	Polyclonal
Application	WB, I, LCI
Application Note	Anti-Human serum Fluorescein has been tested by dot blot and is designed for immunofluorescence microscopy, fluorescence based plate assays (FLISA) and fluorescent western blotting. This product is also suitable for multiplex analysis, including multicolor imaging, utilizing various commercial platforms.
Physical State	Lyophilized
Buffer	0.02 M Potassium Phosphate, 0.15 M Sodium Chloride, pH 7.2
Immunogen	Human Serum Albumin
Reconstitution Volume	1.0 mL
Reconstitution Buffer	Restore with deionized water (or equivalent)
Stabilizer	10 mg/ml Polyethylene Glycol (PEG-8000)
Preservative	0.01% (w/v) Sodium Azide

Anti-HUMAN SERUM ALBUMIN (RABBIT) Antibody Fluorescein Conjugated - Additional Information**Gene ID** 213**Other Names**
213**Purity**

This product was prepared from monospecific antiserum by immunoaffinity chromatography using purified human serum albumin. Assay by immunoelectrophoresis resulted in a single precipitin arc against anti-fluorescein and anti-Rabbit Serum. Analysis by SDS-PAGE was used to determine that this preparation is substantially free of aggregates and shows a banding pattern consistent with purified Rabbit IgG.

Storage Condition

Store vial at 4° C prior to restoration. For extended storage aliquot contents and freeze at -20° C or below. Avoid cycles of freezing and thawing. Centrifuge product if not completely clear after

standing at room temperature. This product is stable for several weeks at 4° C as an undiluted liquid. Dilute only prior to immediate use.

Precautions Note

This product is for research use only and is not intended for therapeutic or diagnostic applications.

Anti-HUMAN SERUM ALBUMIN (RABBIT) Antibody Fluorescein Conjugated - Protein Information

Name ALB

Function

Binds water, Ca(2+), Na(+), K(+), fatty acids, hormones, bilirubin and drugs (Probable). Its main function is the regulation of the colloidal osmotic pressure of blood (Probable). Major zinc transporter in plasma, typically binds about 80% of all plasma zinc (PubMed:19021548). Major calcium and magnesium transporter in plasma, binds approximately 45% of circulating calcium and magnesium in plasma (By similarity). Potentially has more than two calcium-binding sites and might additionally bind calcium in a non-specific manner (By similarity). The shared binding site between zinc and calcium at residue Asp-273 suggests a crosstalk between zinc and calcium transport in the blood (By similarity). The rank order of affinity is zinc > calcium > magnesium (By similarity). Binds to the bacterial siderophore enterobactin and inhibits enterobactin-mediated iron uptake of E.coli from ferric transferrin, and may thereby limit the utilization of iron and growth of enteric bacteria such as E.coli (PubMed:6234017). Does not prevent iron uptake by the bacterial siderophore aerobactin (PubMed:6234017).

Cellular Location

Secreted.

Tissue Location

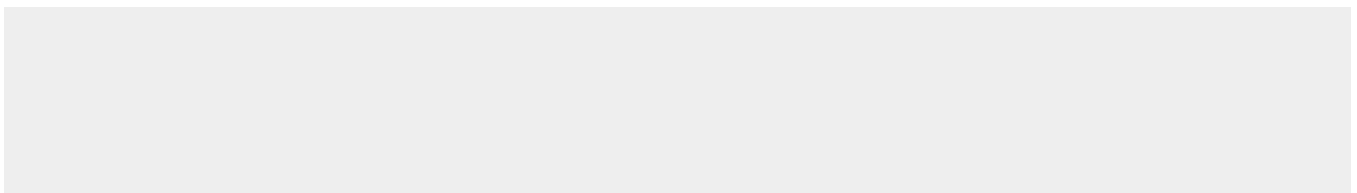
Plasma.

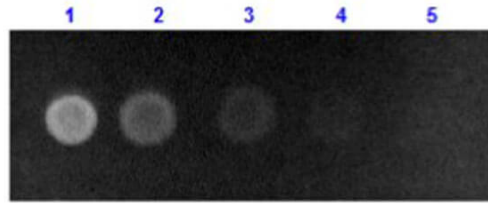
Anti-HUMAN SERUM ALBUMIN (RABBIT) Antibody Fluorescein Conjugated - Protocols

Provided below are standard protocols that you may find useful for product applications.

- [Western Blot](#)
- [Blocking Peptides](#)
- [Dot Blot](#)
- [Immunohistochemistry](#)
- [Immunofluorescence](#)
- [Immunoprecipitation](#)
- [Flow Cytometry](#)
- [Cell Culture](#)

Anti-HUMAN SERUM ALBUMIN (RABBIT) Antibody Fluorescein Conjugated - Images





Dot Blot results of Rabbit Anti-Human Serum Albumin Antibody Fluorescein Conjugate. Dots are Human Serum Albumin: (1) 100ng, (2) 33.3ng, (3) 11.1ng, (4) 3.70ng, (5) 1.23ng. Primary Antibody: none. Secondary Antibody: Rabbit Anti-Human Serum Albumin Antibody FITC at 1ug/mL in 1% Fish Gel 1hr RT. Imaged with BioRad ChemiDoc, Fluorescein filter.

Anti-HUMAN SERUM ALBUMIN (RABBIT) Antibody Fluorescein Conjugated - Background

Anti-Human serum Fluorescein detects Human serum proteins. Serum proteins are those proteins remaining in portion of plasma after coagulation of blood, during which process the plasma protein fibrinogen is converted to fibrin and remains behind in the clot. Anti-Human serum is ideal for investigators involved in Cell Signaling, Cellular Biology and Signal Transduction research.