

**Anti-MEK1 (RABBIT) Antibody Fluorescein Conjugated**  
**MEK1 C-Term Antibody FITC**  
**Catalog # ASR5794****Specification****Anti-MEK1 (RABBIT) Antibody Fluorescein Conjugated - Product Information**

|                       |  |
|-----------------------|--|
| Host                  | Rabbit   |
| Conjugate             | Fluorescein (FITC)   |
| FP Value              | 3.15   |
| Target Species        | Human  |
| Reactivity            | Rat, Human, Mouse  |
| Clonality             | Polyclonal   |
| Application           | WB, IHC, I, LCI  |
| Application Note      | Anti-MEK 1 Fluorescein conjugated antibody has been tested by western blot and is suitable for use in ELISA. Specific conditions of reactivity should be optimized by the end user. Expect a band of approximately 43.5 kDa. |
| Physical State        | Lyophilized  |
| Buffer                | 0.02 M Potassium Phosphate, 0.15 M Sodium Chloride, pH 7.2   |
| Immunogen             | Anti-MEK1 Antibody was produced in rabbits by repeated immunizations with synthetic peptide corresponding to amino acid residues near the C-terminus conjugated to KLH.  |
| Reconstitution Volume | 100 µL   |
| Reconstitution Buffer | Restore with deionized water (or equivalent)   |
| Stabilizer            | 10 mg/mL Bovine Serum Albumin (BSA) - Immunoglobulin and Protease free   |
| Preservative          | 0.01% (w/v) Sodium Azide   |

**Anti-MEK1 (RABBIT) Antibody Fluorescein Conjugated - Additional Information****Gene ID** 5604**Purity**

This fluorescein conjugated affinity purified antibody is directed against human MEK1 protein. Anti-MEK1 antibody was prepared from monospecific antiserum by immunoaffinity chromatography using synthetic peptide coupled to agarose beads followed by cross adsorption to remove any unwanted reactivity. Cross reactivity is expected to occur with human, mouse and rat based on sequence identity of the peptide immunogen. This antibody does not react with the MEK2 isoform.

**Storage Condition**

Store vial at 4° C prior to restoration. For extended storage aliquot contents and freeze at -20° C or below. Avoid cycles of freezing and thawing. Centrifuge product if not completely clear after standing at room temperature. This product is stable for several weeks at 4° C as an undiluted

liquid. Dilute only prior to immediate use.

#### **Precautions Note**

This product is for research use only and is not intended for therapeutic or diagnostic applications.

### **Anti-MEK1 (RABBIT) Antibody Fluorescein Conjugated - Protein Information**

**Name** MAP2K1 ([HGNC:6840](#))

**Synonyms** MEK1, PRKMK1

#### **Function**

Dual specificity protein kinase which acts as an essential component of the MAP kinase signal transduction pathway. Binding of extracellular ligands such as growth factors, cytokines and hormones to their cell-surface receptors activates RAS and this initiates RAF1 activation. RAF1 then further activates the dual-specificity protein kinases MAP2K1/MEK1 and MAP2K2/MEK2. Both MAP2K1/MEK1 and MAP2K2/MEK2 function specifically in the MAPK/ERK cascade, and catalyze the concomitant phosphorylation of a threonine and a tyrosine residue in a Thr-Glu-Tyr sequence located in the extracellular signal-regulated kinases MAPK3/ERK1 and MAPK1/ERK2, leading to their activation and further transduction of the signal within the MAPK/ERK cascade. Activates BRAF in a KSR1 or KSR2-dependent manner; by binding to KSR1 or KSR2 releases the inhibitory intramolecular interaction between KSR1 or KSR2 protein kinase and N-terminal domains which promotes KSR1 or KSR2-BRAF dimerization and BRAF activation (PubMed:<a href="http://www.uniprot.org/citations/29433126" target="\_blank">29433126</a>). Depending on the cellular context, this pathway mediates diverse biological functions such as cell growth, adhesion, survival and differentiation, predominantly through the regulation of transcription, metabolism and cytoskeletal rearrangements. One target of the MAPK/ERK cascade is peroxisome proliferator-activated receptor gamma (PPARG), a nuclear receptor that promotes differentiation and apoptosis. MAP2K1/MEK1 has been shown to export PPARG from the nucleus. The MAPK/ERK cascade is also involved in the regulation of endosomal dynamics, including lysosome processing and endosome cycling through the perinuclear recycling compartment (PNRC), as well as in the fragmentation of the Golgi apparatus during mitosis.

#### **Cellular Location**

Cytoplasm, cytoskeleton, microtubule organizing center, centrosome. Cytoplasm, cytoskeleton, microtubule organizing center, spindle pole body. Cytoplasm. Nucleus Membrane; Peripheral membrane protein. Note=Localizes at centrosomes during prometaphase, midzone during anaphase and midbody during telophase/cytokinesis (PubMed:14737111). Membrane localization is probably regulated by its interaction with KSR1 (PubMed:10409742)

#### **Tissue Location**

Widely expressed, with extremely low levels in brain.

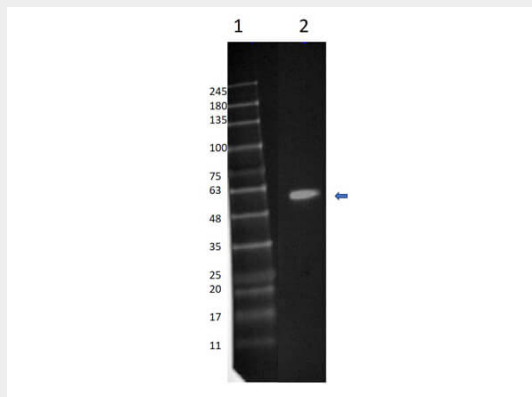
### **Anti-MEK1 (RABBIT) Antibody Fluorescein Conjugated - Protocols**

Provided below are standard protocols that you may find useful for product applications.

- [Western Blot](#)
- [Blocking Peptides](#)
- [Dot Blot](#)
- [Immunohistochemistry](#)
- [Immunofluorescence](#)
- [Immunoprecipitation](#)

- [Flow Cytometry](#)
- [Cell Culture](#)

### Anti-MEK1 (RABBIT) Antibody Fluorescein Conjugated - Images



Western Blot of Rabbit Anti-MEK1 (C-term) FITC Conjugated Antibody. Lane 1: Opal Prestained Molecular Weight Marker (p/n MB-210-0500) (5  $\mu$ L). Lane 2: MEK1 human recombinant protein (p/n 009-001-GQ3) (0.1  $\mu$ g). Primary Antibody: Anti-MEK1 FITC conjugated at 1  $\mu$ g/mL overnight at 2-8°C. Secondary Antibody: none. Block: BlockOut Buffer (p/n MB-073). Expected MW: ~47kDa.

### Anti-MEK1 (RABBIT) Antibody Fluorescein Conjugated - Background

MEK1 antibodies detect the MEK1 isoform. Mitogen-activated protein kinase kinase 1, also known as MKK or MEK, is an integral component of the MAP kinase cascade that regulates cell growth and differentiation. This pathway also plays a key role in synaptic plasticity in the brain. Activated MEK 1 acts as a dual specificity kinase phosphorylating both a threonine and a tyrosine residue on MAP kinase. The MEK1 antibody is ideal for investigators involved in Neuroscience, Cell Signaling and Cancer Research.