

Anti-RFP (CHICKEN) Antibody
RFP Antibody
Catalog # ASR5910**Specification**

Anti-RFP (CHICKEN) Antibody - Product Information

Host	Chicken
Conjugate	Unconjugated
Clonality	Polyclonal
Application	WB, E, I, LCI
Application Note	Anti-RFP is designed to detect recombinant RFP. Anti-RFP antibody has been tested by ELISA and western blot to detect RFP. Use either alkaline phosphatase or peroxidase conjugated polyclonal anti-RFP to detect RFP or RFP containing proteins on western blots. Optimal titers for applications should be determined by the researcher. This product shows optimal performance by western blot.
Physical State	Liquid (sterile filtered)
Buffer	0.02 M Potassium Phosphate, 0.15 M Sodium Chloride, pH 7.2
Immunogen	The immunogen is a Red Fluorescent Protein (RFP) fusion protein corresponding to the full length amino acid sequence (234aa) derived from the mushroom polyp coral <i>Discosoma</i> .
Preservative	0.01% (w/v) Sodium Azide

Anti-RFP (CHICKEN) Antibody - Additional Information**Purity**

RFP Antibody was prepared from egg yolks by a multi-step process which includes filtration, delipidation, salt fractionation and extensive dialysis against the buffer stated above. RFP Antibody was tested by western blot.

Storage Condition

Store vial at -20° C prior to opening. Aliquot contents and freeze at -20° C or below for extended storage. Avoid cycles of freezing and thawing. Centrifuge product if not completely clear after standing at room temperature. This product is stable for several weeks at 4° C as an undiluted liquid. Dilute only prior to immediate use.

Precautions Note

This product is for research use only and is not intended for therapeutic or diagnostic applications.

Anti-RFP (CHICKEN) Antibody - Protein Information

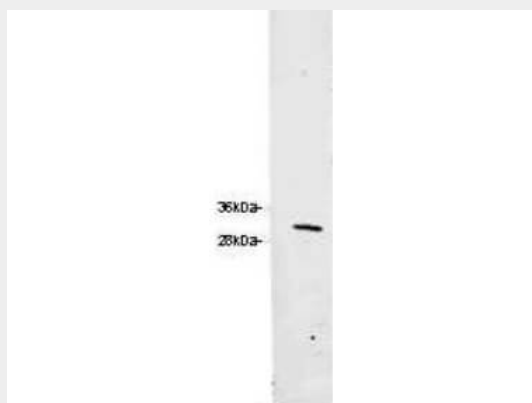
Name RFP**Function**

Thought to play a role in photoprotection of the coral's resident symbiont microalgae's photosystems from photoinhibition caused by high light levels found near the surface of coral reefs. In deeper water, the fluorescence may be to convert blue light into longer wavelengths more suitable for use in photosynthesis by the microalgal symbionts.

Anti-RFP (CHICKEN) Antibody - Protocols

Provided below are standard protocols that you may find useful for product applications.

- [Western Blot](#)
- [Blocking Peptides](#)
- [Dot Blot](#)
- [Immunohistochemistry](#)
- [Immunofluorescence](#)
- [Immunoprecipitation](#)
- [Flow Cytometry](#)
- [Cell Culture](#)

Anti-RFP (CHICKEN) Antibody - Images

Western blot of Rockland's Chicken Anti-RFP Antibody. Loaded 0.1 µg of RFP protein (p/n 000-001-379) on a 4-20% gel and transferred to nitrocellulose membrane. Chicken anti-RFP Antibody was added at 1.0 µg/mL at RT for 2 hours. IRDye800® goat anti-Chicken (p/n 603-132-126) was added at 1:20,000 at RT for 45 minutes.

Anti-RFP (CHICKEN) Antibody - Background

Antibodies to RFP (*Discosoma* spp.) are intended for use in immunological assays such as western blotting.