

Anti-RFP (CHICKEN) Biotin Conjugated Antibody
RFP Antibody Biotin Conjugated
Catalog # ASR5913**Specification****Anti-RFP (CHICKEN) Biotin Conjugated Antibody - Product Information**

Host	Chicken
Conjugate	Biotin
Clonality	Polyclonal
Application	WB, E, I, LCI
Application Note	Anti-RFP is designed to detect recombinant RFP. This antibody has been tested to detect RFP by immunoblotting and immunofluorescence and is suitable for use in immunohistochemistry. Use either alkaline phosphatase or peroxidase conjugated polyclonal anti-RFP to detect RFP or RFP containing proteins on western blots. Optimal titers for applications should be determined by the researcher. This product shows optimal performance by western blot.
Physical State	Lyophilized
Buffer	0.02 M Potassium Phosphate, 0.15 M Sodium Chloride, pH 7.2
Immunogen	The immunogen is a Red Fluorescent Protein (RFP) fusion protein corresponding to the full length amino acid sequence (234aa) derived from the mushroom polyp coral <i>Discosoma</i> .
Reconstitution Volume	100 µL
Reconstitution Buffer	Restore with deionized water (or equivalent)
Stabilizer	10 mg/mL Bovine Serum Albumin (BSA) - Immunoglobulin and Protease free
Preservative	0.01% (w/v) Sodium Azide

Anti-RFP (CHICKEN) Biotin Conjugated Antibody - Additional Information**Purity**

RFP Antibody was prepared from egg yolks by a multi-step process which includes filtration, delipidation, salt fractionation and extensive dialysis against the buffer stated above. RFP Antibody was tested by western blot and immunoelectrophoresis against anti-biotin, anti-chicken serum, and RFP.

Storage Condition

Store vial at 4° C prior to restoration. For extended storage aliquot contents and freeze at -20° C or below. Avoid cycles of freezing and thawing. Centrifuge product if not completely clear after standing at room temperature. This product is stable for several weeks at 4° C as an undiluted liquid. Dilute only prior to immediate use.

Precautions Note

This product is for research use only and is not intended for therapeutic or diagnostic applications.

Anti-RFP (CHICKEN) Biotin Conjugated Antibody - Protein Information

Name RFP

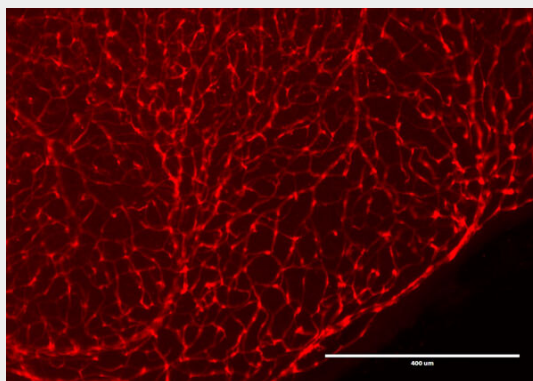
Function

Thought to play a role in photoprotection of the coral's resident symbiont microalgae's photosystems from photoinhibition caused by high light levels found near the surface of coral reefs. In deeper water, the fluorescence may be to convert blue light into longer wavelengths more suitable for use in photosynthesis by the microalgal symbionts.

Anti-RFP (CHICKEN) Biotin Conjugated Antibody - Protocols

Provided below are standard protocols that you may find useful for product applications.

- [Western Blot](#)
- [Blocking Peptides](#)
- [Dot Blot](#)
- [Immunohistochemistry](#)
- [Immunofluorescence](#)
- [Immunoprecipitation](#)
- [Flow Cytometry](#)
- [Cell Culture](#)

Anti-RFP (CHICKEN) Biotin Conjugated Antibody - Images

Immunofluorescence Microscopy of Chicken Anti-RFP antibody. Tissue: DsRed transgenic mouse retina. Fixation: 4% PFA. Blocking: 3% BSA, 0.3% Triton Primary antibody: RFP-biotin antibody at 1:100 for 12 h at 4°C. Secondary antibody: Alexa488 secondary antibody at 1:10,000 for 4 hours at RT. Localization: RFP is nuclear and occasionally cytoplasmic. Staining: labeled in red.

Anti-RFP (CHICKEN) Biotin Conjugated Antibody - Background

Antibodies to RFP (*Discosoma* spp.) are intended for use in immunological assays including western blotting.