

**ABCF2 Antibody (monoclonal) (M01)****Mouse monoclonal antibody raised against a partial recombinant ABCF2.****Catalog # AT1010a****Specification**

---

**ABCF2 Antibody (monoclonal) (M01) - Product Information**

Application	WB, IHC, IP, E
Primary Accession	<a href="#">O9UG63</a>
Other Accession	<a href="#">BC001661</a>
Reactivity	Human
Host	mouse
Clonality	Monoclonal
Isotype	IgG2a Kappa
Calculated MW	71290

**ABCF2 Antibody (monoclonal) (M01) - Additional Information****Gene ID** 10061**Other Names**

ATP-binding cassette sub-family F member 2, Iron-inhibited ABC transporter 2, ABCF2

**Target/Specificity**

ABCF2 (AAH01661, 1 a.a. ~ 110 a.a) partial recombinant protein with GST tag. MW of the GST tag alone is 26 KDa.

**Dilution**

WB~~1:500~1000

IHC~~1:100~500

IP~~N/A

E~~N/A

**Format**

Clear, colorless solution in phosphate buffered saline, pH 7.2 .

**Storage**

Store at -20°C or lower. Aliquot to avoid repeated freezing and thawing.

**Precautions**

ABCF2 Antibody (monoclonal) (M01) is for research use only and not for use in diagnostic or therapeutic procedures.

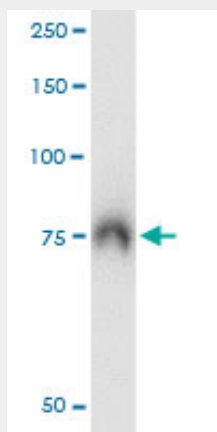
**ABCF2 Antibody (monoclonal) (M01) - Protocols**

Provided below are standard protocols that you may find useful for product applications.

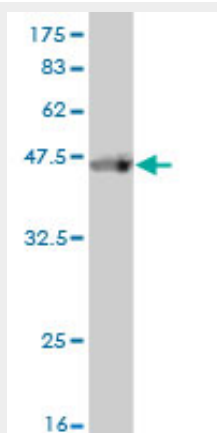
- [Western Blot](#)

- [Blocking Peptides](#)
- [Dot Blot](#)
- [Immunohistochemistry](#)
- [Immunofluorescence](#)
- [Immunoprecipitation](#)
- [Flow Cytometry](#)
- [Cell Culture](#)

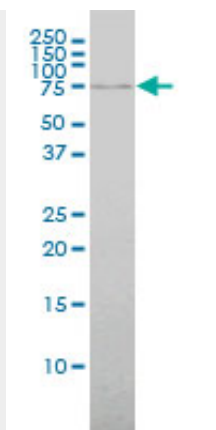
#### ABCF2 Antibody (monoclonal) (M01) - Images



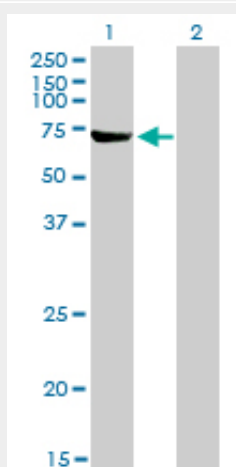
Immunoprecipitation of ABCF2 transfected lysate using anti-ABCF2 monoclonal antibody and Protein A Magnetic Bead ([U0007](#)), and immunoblotted with ABCF2 monoclonal antibody.



Antibody Reactive Against Recombinant Protein. Western Blot detection against Immunogen (37.73 kDa) .



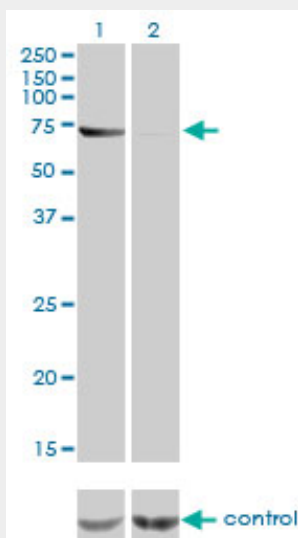
ABCF2 monoclonal antibody (M01), clone 1D11 Western Blot analysis of ABCF2 expression in HeLa (Cat # AT1010a)



Western Blot analysis of ABCF2 expression in transfected 293T cell line by ABCF2 monoclonal antibody (M01), clone 1D11.

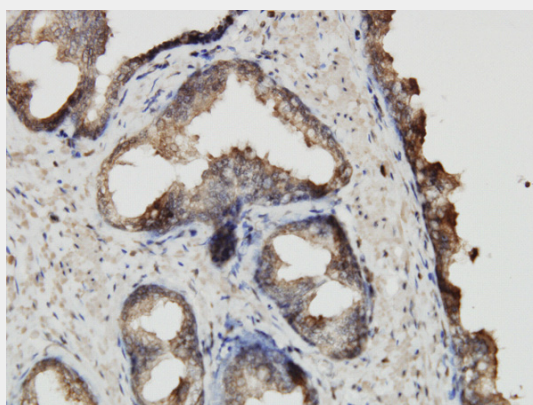
Lane 1: ABCF2 transfected lysate(68.53 KDa).

Lane 2: Non-transfected lysate.

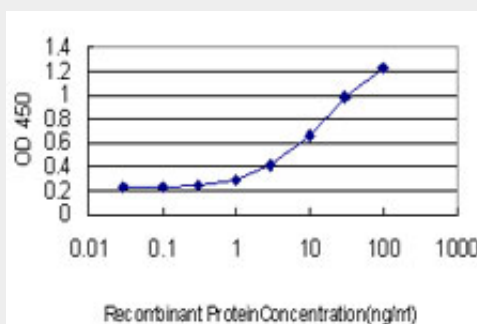


Western blot analysis of ABCF2 over-expressed 293 cell line, cotransfected with ABCF2 Validated

#### Chimera RNAi ( (Cat # AT1010a )



Immunoperoxidase of monoclonal antibody to ABCF2 on formalin-fixed paraffin-embedded human prostate. [antibody concentration 3 ug/ml]



Detection limit for recombinant GST tagged ABCF2 is approximately 0.3ng/ml as a capture antibody.

#### ABCF2 Antibody (monoclonal) (M01) - Background

The protein encoded by this gene is a member of the superfamily of ATP-binding cassette (ABC) transporters. ABC proteins transport various molecules across extra- and intracellular membranes. ABC genes are divided into seven distinct subfamilies (ABC1, MDR/TAP, MRP, ALD, OABP, GCN20, and White). This protein is a member of the GCN20 subfamily. Alternative splicing of this gene results in multiple transcript variants.

#### ABCF2 Antibody (monoclonal) (M01) - References

Association study between single-nucleotide polymorphisms in 199 drug-related genes and commonly measured quantitative traits of 752 healthy Japanese subjects. Saito A, et al. J Hum Genet, 2009 Jun. PMID 19343046. Can ABCF2 protein expression predict the prognosis of uterine cancer? Nishimura S, et al. Br J Cancer, 2008 Nov 18. PMID 19002184. Differential expression of ABCF2 protein among different histologic types of epithelial ovarian cancer and in clear cell adenocarcinomas of different organs. Nishimura S, et al. Hum Pathol, 2007 Jan. PMID 16996567. Identification of overexpression and amplification of ABCF2 in clear cell ovarian adenocarcinomas by cDNA microarray analyses. Tsuda H, et al. Clin Cancer Res, 2005 Oct 1. PMID 16203778. The status, quality, and expansion of the NIH full-length cDNA project: the Mammalian Gene Collection (MGC). Gerhard DS, et al. Genome Res, 2004 Oct. PMID 15489334.