

**ABL2 Antibody (monoclonal) (M09)****Mouse monoclonal antibody raised against a partial recombinant ABL2.****Catalog # AT1014a****Specification**

---

**ABL2 Antibody (monoclonal) (M09) - Product Information**

Application	WB, IHC, IF, E
Primary Accession	<a href="#">P42684</a>
Other Accession	<a href="#">BC065912</a>
Reactivity	Human
Host	mouse
Clonality	Monoclonal
Isotype	IgG3 Kappa
Calculated MW	128343

**ABL2 Antibody (monoclonal) (M09) - Additional Information****Gene ID 27****Other Names**

Abelson tyrosine-protein kinase 2, Abelson murine leukemia viral oncogene homolog 2, Abelson-related gene protein, Tyrosine-protein kinase ARG, ABL2, ABLL, ARG

**Target/Specificity**

ABL2 (AAH65912, 743 a.a. ~ 842 a.a) partial recombinant protein with GST tag. MW of the GST tag alone is 26 KDa.

**Dilution**

WB~~1:500~1000  
IHC~~1:100~500  
IF~~1:50~200  
E~~N/A

**Format**

Clear, colorless solution in phosphate buffered saline, pH 7.2 .

**Storage**

Store at -20°C or lower. Aliquot to avoid repeated freezing and thawing.

**Precautions**

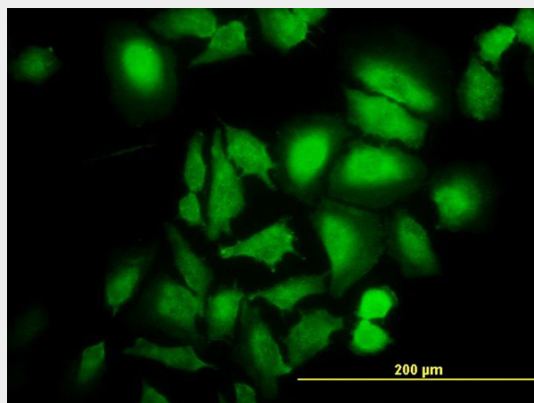
ABL2 Antibody (monoclonal) (M09) is for research use only and not for use in diagnostic or therapeutic procedures.

**ABL2 Antibody (monoclonal) (M09) - Protocols**

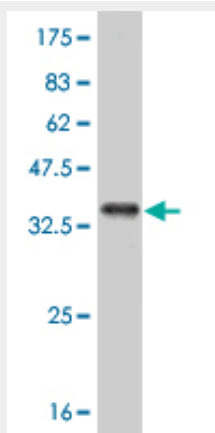
Provided below are standard protocols that you may find useful for product applications.

- [Western Blot](#)
- [Blocking Peptides](#)
- [Dot Blot](#)
- [Immunohistochemistry](#)
- [Immunofluorescence](#)
- [Immunoprecipitation](#)
- [Flow Cytometry](#)
- [Cell Culture](#)

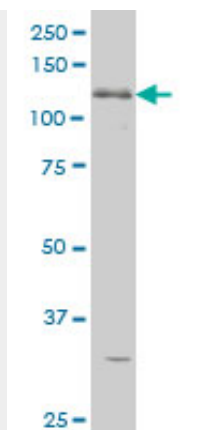
#### ABL2 Antibody (monoclonal) (M09) - Images



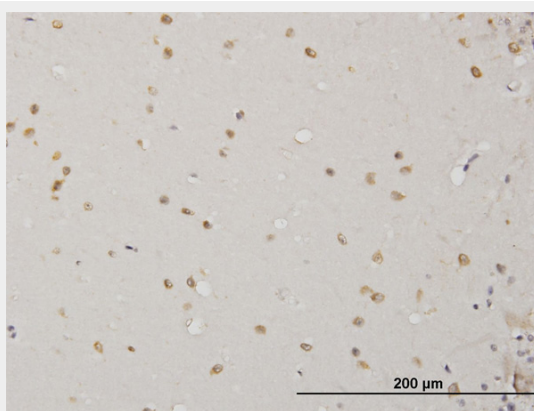
Immunofluorescence of monoclonal antibody to ABL2 on HeLa cell. [antibody concentration 10 ug/ml]



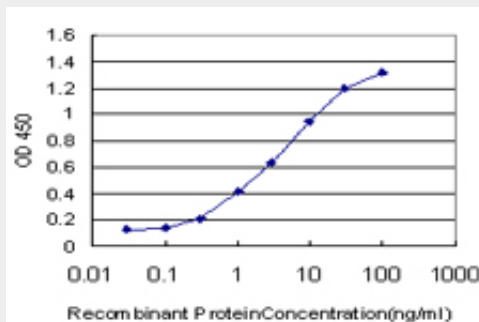
Antibody Reactive Against Recombinant Protein. Western Blot detection against Immunogen (36.41 KDa) .



ABL2 monoclonal antibody (M09), clone 5C6 Western Blot analysis of ABL2 expression in K-562 (Cat # AT1014a)



Immunoperoxidase of monoclonal antibody to ABL2 on formalin-fixed paraffin-embedded human cerebellum. [antibody concentration 1.5 ug/ml]



Detection limit for recombinant GST tagged ABL2 is approximately 0.1ng/ml as a capture antibody.

### ABL2 Antibody (monoclonal) (M09) - Background

This gene encodes a member of the Abelson family of nonreceptor tyrosine protein kinases. The protein is highly similar to the c-abl oncogene 1 protein, including the tyrosine kinase, SH2 and SH3 domains, and it plays a role in cytoskeletal rearrangements through its C-terminal F-actin- and microtubule-binding sequences. This gene is expressed in both normal and tumor cells, and is involved in translocation with the ets variant 6 gene in leukemia. Multiple alternatively spliced transcript variants encoding different protein isoforms have been found for this gene.

### ABL2 Antibody (monoclonal) (M09) - References

Variation at the NFATC2 Locus Increases the Risk of Thiazolinedione-Induced Edema in the Diabetes REduction Assessment with ramipril and rosiglitazone Medication (DREAM) Study. Bailey SD, et al. Diabetes Care, 2010 Jul 13. PMID 20628086. Successful treatment using omacetaxine for a patient with CML and BCR-ABL1 [corrected] 35INS. Mahadeo KM, et al. Blood, 2010 May 6. PMID 20448119. NMR structure of F-actin-binding domain of Arg/Abl2 from Homo sapiens. Liu G, et al. Proteins, 2010 Apr. PMID 20077570. Gene-centric association signals for lipids and apolipoproteins identified via the HumanCVD BeadChip. Talmud PJ, et al. Am J Hum Genet, 2009 Nov. PMID 19913121. Reciprocal regulation of Abl and receptor tyrosine kinases. Srinivasan D, et al. Cell Signal, 2009 Jul. PMID 19275932.