

**ACTA2 Antibody (monoclonal) (M02)****Mouse monoclonal antibody raised against a full length recombinant ACTA2.****Catalog # AT1030a****Specification**

---

**ACTA2 Antibody (monoclonal) (M02) - Product Information**

Application	WB, IF, E
Primary Accession	<a href="#">P62736</a>
Other Accession	<a href="#">BC017554</a>
Reactivity	Human
Host	mouse
Clonality	Monoclonal
Isotype	IgG2b Kappa
Calculated MW	42009

**ACTA2 Antibody (monoclonal) (M02) - Additional Information****Gene ID 59****Other Names**

Actin, aortic smooth muscle, Alpha-actin-2, Cell growth-inhibiting gene 46 protein, ACTA2, ACTSA, ACTVS

**Target/Specificity**

ACTA2 (AAH17554.1, 1 a.a. ~ 377 a.a) full-length recombinant protein with GST tag. MW of the GST tag alone is 26 KDa.

**Dilution**

WB~~1:500~1000

IF~~1:50~200

E~~N/A

**Format**

Clear, colorless solution in phosphate buffered saline, pH 7.2 .

**Storage**

Store at -20°C or lower. Aliquot to avoid repeated freezing and thawing.

**Precautions**

ACTA2 Antibody (monoclonal) (M02) is for research use only and not for use in diagnostic or therapeutic procedures.

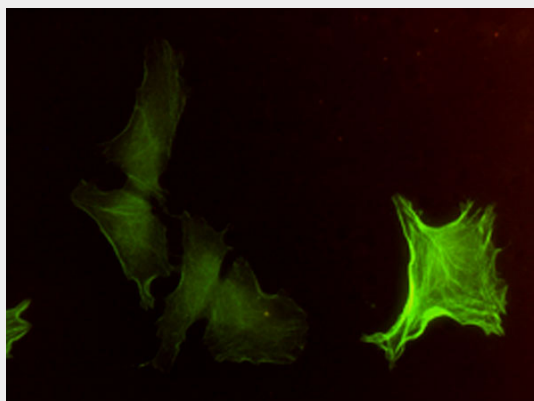
**ACTA2 Antibody (monoclonal) (M02) - Protocols**

Provided below are standard protocols that you may find useful for product applications.

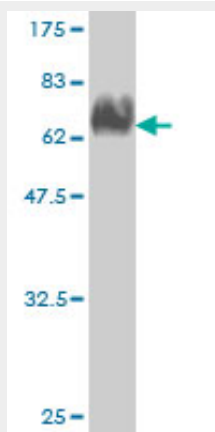
- [Western Blot](#)

- [Blocking Peptides](#)
- [Dot Blot](#)
- [Immunohistochemistry](#)
- [Immunofluorescence](#)
- [Immunoprecipitation](#)
- [Flow Cytometry](#)
- [Cell Culture](#)

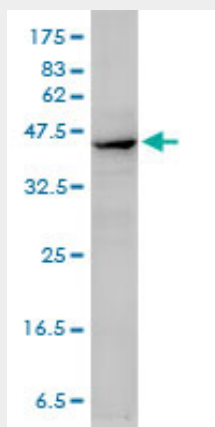
#### ACTA2 Antibody (monoclonal) (M02) - Images



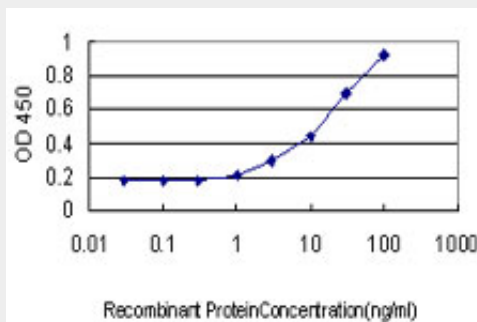
Immunofluorescence of monoclonal antibody to ACTA2 on HeLa cell. [antibody concentration 1 ~ 10 ug/ml]



Antibody Reactive Against Recombinant Protein. Western Blot detection against Immunogen (67.21 KDa) .



ACTA2 monoclonal antibody (M01), clone 4A8-2H3. Western Blot analysis of ACTA2 expression in human omentum, serous carcinoma.



Detection limit for recombinant GST tagged ACTA2 is approximately 1ng/ml as a capture antibody.

### **ACTA2 Antibody (monoclonal) (M02) - Background**

The protein encoded by this gene belongs to the actin family of proteins, which are highly conserved proteins that play a role in cell motility, structure and integrity. Alpha, beta and gamma actin isoforms have been identified, with alpha actins being a major constituent of the contractile apparatus, while beta and gamma actins are involved in the regulation of cell motility. This actin is an alpha actin that is found in skeletal muscle. Defects in this gene cause aortic aneurysm familial thoracic type 6. Multiple alternatively spliced variants, encoding the same protein, have been identified.

### **ACTA2 Antibody (monoclonal) (M02) - References**

1. Isolation and Characterization of a Primary Proximal Tubular Epithelial Cell Model from Human Kidney by CD10/CD13 Double Labeling. Van der Hauwaert C, Savary G, Gnemmi V, Glowacki F, Pottier N, Bouillez A, Maboudou P, Zini L, Leroy X, Cauffiez C, Perrais M, Aubert S. *PLoS One*. 2013 Jun 14;8(6):e66750. doi: 10.1371/journal.pone.0066750. Print 2013. 2. miR-199a-5p Is Upregulated during Fibrogenic Response to Tissue Injury and Mediates TGFbeta-Induced Lung Fibroblast Activation by Targeting Caveolin-1. Lino Cardenas CL, Henaoui IS, Courcot E, Roderburg C, Cauffiez C, Aubert S, Copin MC, Wallaert B, Glowacki F, Dewaeles E, Milosevic J, Maurizio J, Tedrow J, Marcet B, Lo-Guidice JM, Kaminski N, Barbry P, Luedde T, Perrais M, Mari B, Pottier N. *PLoS Genet*. 2013 Feb;9(2):e1003291. doi: 10.1371/journal.pgen.1003291. Epub 2013 Feb 14.