

ACTR2 Antibody (monoclonal) (M01)**Mouse monoclonal antibody raised against a full length recombinant ACTR2.****Catalog # AT1034a****Specification**

ACTR2 Antibody (monoclonal) (M01) - Product Information

Application	WB, IHC, E
Primary Accession	P61160
Other Accession	BC014546
Reactivity	Human
Host	mouse
Clonality	Monoclonal
Isotype	IgG2a kappa
Calculated MW	44761

ACTR2 Antibody (monoclonal) (M01) - Additional Information**Gene ID** 10097**Other Names**

Actin-related protein 2, Actin-like protein 2, ACTR2, ARP2

Target/Specificity

ACTR2 (AAH14546.1, 1 a.a. ~ 394 a.a) full-length recombinant protein with GST tag. MW of the GST tag alone is 26 KDa.

Dilution

WB~~1:500~1000

IHC~~1:100~500

E~~N/A

Format

Clear, colorless solution in phosphate buffered saline, pH 7.2 .

Storage

Store at -20°C or lower. Aliquot to avoid repeated freezing and thawing.

Precautions

ACTR2 Antibody (monoclonal) (M01) is for research use only and not for use in diagnostic or therapeutic procedures.

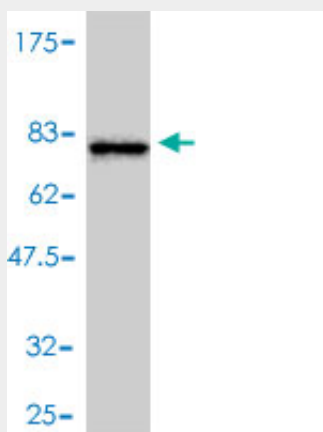
ACTR2 Antibody (monoclonal) (M01) - Protocols

Provided below are standard protocols that you may find useful for product applications.

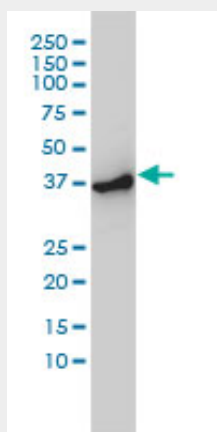
- [Western Blot](#)
- [Blocking Peptides](#)

- [Dot Blot](#)
- [Immunohistochemistry](#)
- [Immunofluorescence](#)
- [Immunoprecipitation](#)
- [Flow Cytometry](#)
- [Cell Culture](#)

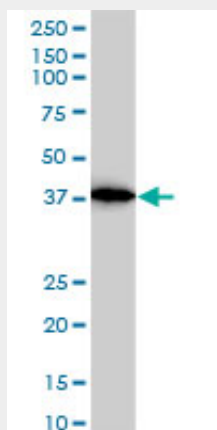
ACTR2 Antibody (monoclonal) (M01) - Images



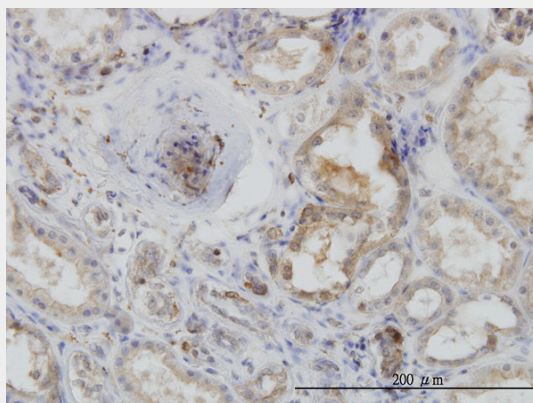
Antibody Reactive Against Recombinant Protein. Western Blot detection against Immunogen (69.08 kDa) .



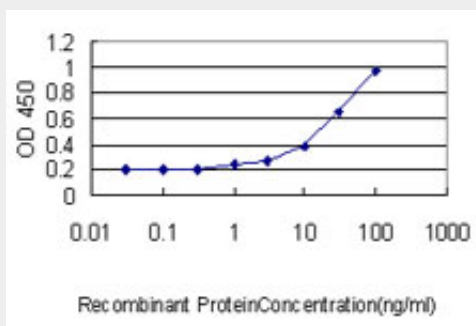
ACTR2 monoclonal antibody (M01), clone 1B10-C4 Western Blot analysis of ACTR2 expression in HeLa S3 NE ((Cat # AT1034a)



ACTR2 monoclonal antibody (M01), clone 1B10-C4. Western Blot analysis of ACTR2 expression in A-431 (Cat # AT1034a)



Immunoperoxidase of monoclonal antibody to ACTR2 on formalin-fixed paraffin-embedded human kidney. [antibody concentration 3 ug/ml]



Detection limit for recombinant GST tagged ACTR2 is approximately 0.03ng/ml as a capture antibody.

ACTR2 Antibody (monoclonal) (M01) - Background

The specific function of this gene has not yet been determined; however, the protein it encodes is known to be a major constituent of the ARP2/3 complex. This complex is located at the cell surface and is essential to cell shape and motility through lamellipodial actin assembly and protrusion. Two transcript variants encoding different isoforms have been found for this gene.

ACTR2 Antibody (monoclonal) (M01) - References

An actin-filament-binding interface on the Arp2/3 complex is critical for nucleation and branch stability. Goley ED, et al. Proc Natl Acad Sci U S A, 2010 May 4. PMID 20404198. Distinct roles for the actin nucleators Arp2/3 and hDia1 during NK-mediated cytotoxicity. Butler B, et al. Curr Biol, 2009 Dec 1. PMID 19913427. Local network topology in human protein interaction data predicts functional association. Li H, et al. PLoS One, 2009 Jul 29. PMID 19641626. Host cell entry by apicomplexa parasites requires actin polymerization in the host cell. Gonzalez V, et al. Cell Host Microbe, 2009 Mar 19. PMID 19286135. The rate of N-WASP exchange limits the extent of ARP2/3-complex-dependent actin-based motility. Weisswange I, et al. Nature, 2009 Mar 5. PMID 19262673.