

ADH6 Antibody (monoclonal) (M01)**Mouse monoclonal antibody raised against a partial recombinant ADH6.****Catalog # AT1056a****Specification**

ADH6 Antibody (monoclonal) (M01) - Product Information

Application	WB, E
Primary Accession	P28332
Other Accession	NM_000672
Reactivity	Human
Host	mouse
Clonality	Monoclonal
Isotype	IgG2a Kappa
Calculated MW	39073

ADH6 Antibody (monoclonal) (M01) - Additional Information**Gene ID** 130**Other Names**

Alcohol dehydrogenase 6, ADH6

Target/Specificity

ADH6 (NP_000663, 55 a.a. ~ 144 a.a) partial recombinant protein with GST tag. MW of the GST tag alone is 26 KDa.

Dilution

WB~~1:500~1000

E~~N/A

Format

Clear, colorless solution in phosphate buffered saline, pH 7.2 .

Storage

Store at -20°C or lower. Aliquot to avoid repeated freezing and thawing.

Precautions

ADH6 Antibody (monoclonal) (M01) is for research use only and not for use in diagnostic or therapeutic procedures.

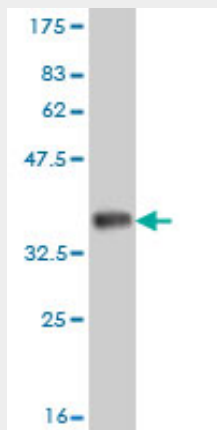
ADH6 Antibody (monoclonal) (M01) - Protocols

Provided below are standard protocols that you may find useful for product applications.

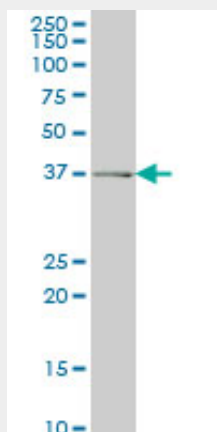
- [Western Blot](#)
- [Blocking Peptides](#)
- [Dot Blot](#)

- [Immunohistochemistry](#)
- [Immunofluorescence](#)
- [Immunoprecipitation](#)
- [Flow Cytometry](#)
- [Cell Culture](#)

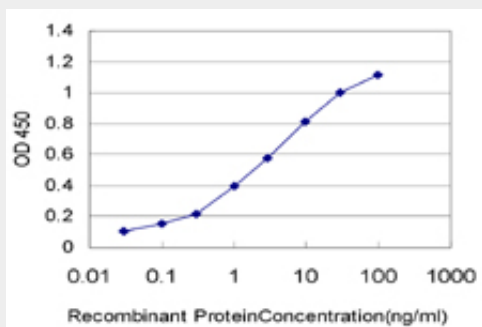
ADH6 Antibody (monoclonal) (M01) - Images



Antibody Reactive Against Recombinant Protein. Western Blot detection against Immunogen (35.64 kDa) .



ADH6 monoclonal antibody (M01), clone 4G4 Western Blot analysis of ADH6 expression in K-562 (Cat # AT1056a)



Detection limit for recombinant GST tagged ADH6 is approximately 0.03ng/ml as a capture antibody.

ADH6 Antibody (monoclonal) (M01) - Background

This gene encodes class V alcohol dehydrogenase, which is a member of the alcohol dehydrogenase family. Members of this family metabolize a wide variety of substrates, including ethanol, retinol, other aliphatic alcohols, hydroxysteroids, and lipid peroxidation products. This gene is expressed in the stomach as well as in the liver, and it contains a glucocorticoid response element upstream of its 5' UTR, which is a steroid hormone receptor binding site. Alternatively spliced transcript variants encoding different isoforms have been found for this gene.

ADH6 Antibody (monoclonal) (M01) - References

Genetical genomic determinants of alcohol consumption in rats and humans. Tabakoff B, et al. BMC Biol, 2009 Oct 27. PMID 19874574. Functional variants in ADH1B and ALDH2 coupled with alcohol and smoking synergistically enhance esophageal cancer risk. Cui R, et al. Gastroenterology, 2009 Nov. PMID 19698717. Association study between single-nucleotide polymorphisms in 199 drug-related genes and commonly measured quantitative traits of 752 healthy Japanese subjects. Saito A, et al. J Hum Genet, 2009 Jun. PMID 19343046. Multiple ADH genes modulate risk for drug dependence in both African- and European-Americans. Luo X, et al. Hum Mol Genet, 2007 Feb 15. PMID 17185388. Diplotype trend regression analysis of the ADH gene cluster and the ALDH2 gene: multiple significant associations with alcohol dependence. Luo X, et al. Am J Hum Genet, 2006 Jun. PMID 16685648.